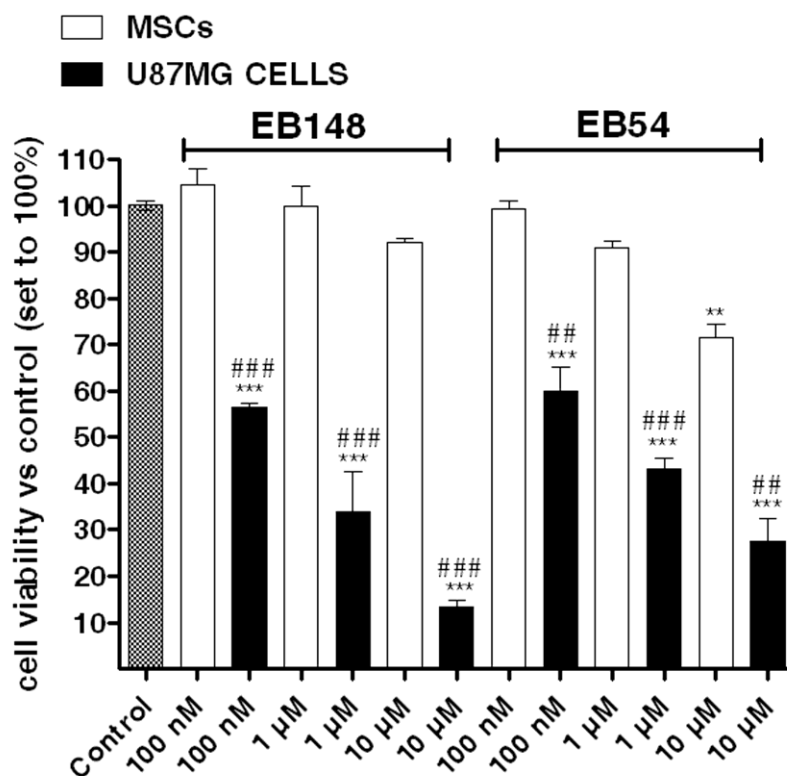


Long lasting MDM2/Translocator protein modulator: a new strategy for irreversible apoptosis of human glioblastoma cells

Supplementary Material

Supplementary Figure 1



Supplementary Figure 1. MSCs or U87MG cells were incubated with the indicated concentration of EB148 or EB54 for 72 h. At the end of treatment, cell proliferation was measured using MTS assay. The data are expressed as a percentage with respect to that of untreated cells (control), which was set to 100%, and are the mean values \pm SEM of three independent experiments, each performed in duplicate. The significance of the differences was determined with a one-way ANOVA with Bonferroni post-test: *** $p < 0.001$ vs control; ## $p < 0.005$, ### $p < 0.001$ vs. percentages in MSCs.