

SUPPLEMENTAL MATERIAL

Friesen et al., <http://www.jem.org/cgi/content/full/jem.20151990/DC1>

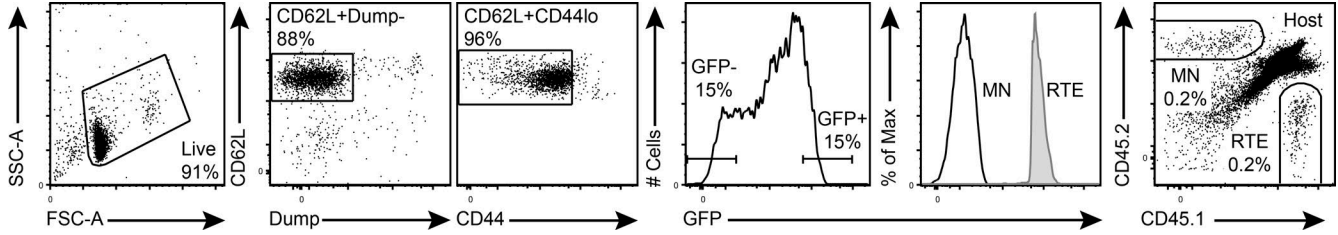


Figure S1. **RTE sorting strategy.** Sort gate strategy for the isolation of untouched RTEs and MN T cells (first four panels) and post-sort analysis (fifth panel) based on the adoptive transfer model of Kearney et al. (1994). 7 d after transfer, donor cell populations were easily distinguished from each other and from host cells in the pLNs of RIP-mOVA Tg recipients (far right panel). No proliferation or IL-2 or IFN- γ production by OT-I or OT-II RTEs or mature T cells was seen in WT B6 recipients or in the iLNs of RIP-mOVA Tg hosts 7 d after transfer. FSC-A, forward scatter area; SSC-A, side scatter area.

REFERENCE

Kearney, E.R., K.A. Pape, D.Y. Loh, and M.K. Jenkins. 1994. Visualization of peptide-specific T cell immunity and peripheral tolerance induction in vivo. *Immunity*. 1:327–339. [http://dx.doi.org/10.1016/1074-7613\(94\)90084-1](http://dx.doi.org/10.1016/1074-7613(94)90084-1)