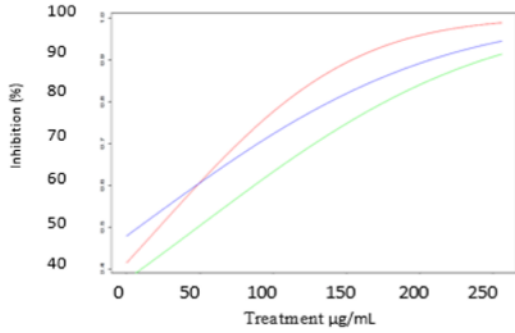


Control Group 1

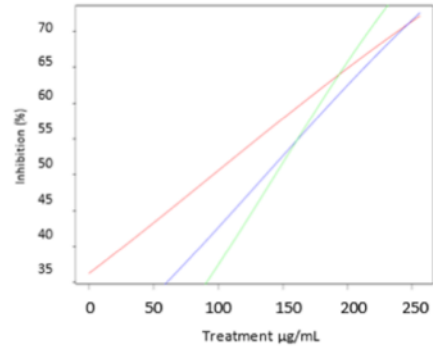


Coefficients:

	Estimate	Std. Error	z value	Pr(> z)
(Intercept)	0.1142904	0.0286129	3.994	6.49e-05 ***
Treatment	0.0073122	0.0001544	47.344	< 2e-16 ***
Replication	-0.1507419	0.0124034	-12.153	< 2e-16 ***

	DL 50	LI	LS
Replication	5.171	-5.818	16.666
Replication	25.858	10.804	41.593
Replication	46.545	27.428	66.519

Isolate Patient 8

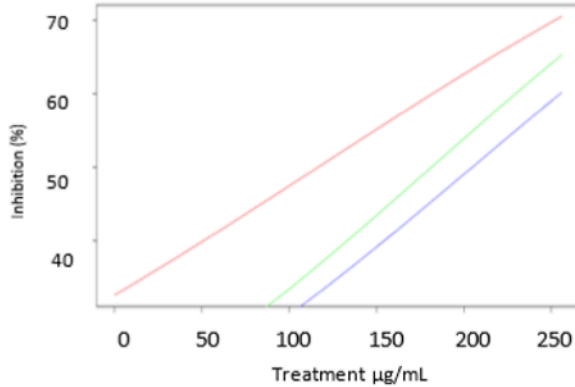


Coefficients:

	Estimate	Std. Error	z value	Pr(> z)
(Intercept)	-0.2800590	0.0434581	-6.444	1.16e-10 ***
Treatment	0.0049738	0.0001916	25.962	< 2e-16 ***
Replication	-0.1908983	0.0207795	-9.187	< 2e-16 ***

	DL 50	LI	LS
Replication	95.677	64.495	129.801
Replication	131.878	92.565	180.172
Replication	170.667	120.634	230.543

Isolate Patient 9

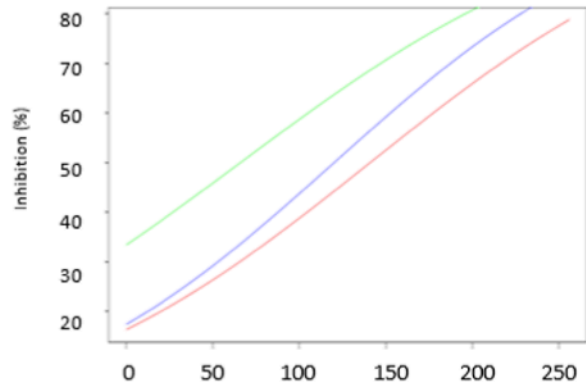


Coefficients:

	Estimate	Std. Error	z value	Pr(> z)
(Intercept)	-0.3550922	0.0408054	-8.702	<2e-16 ***
Treatment	0.0045397	0.0001803	25.172	<2e-16 ***
Replication	-0.2167800	0.0195758	-11.074	<2e-16 ***

	DL 50	LI	LS
Replication	126.707	92.748	164.821
Replication	173.252	129.262	225.715
Replication	222.384	165.775	286.608

Isolate Patient 46

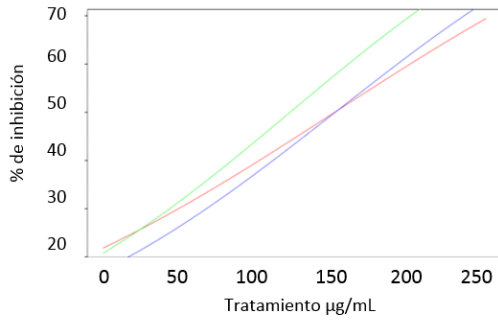


Coefficients:

	Estimate	Std. Error	z value	Pr(> z)
(Intercept)	-1.2926925	0.0368649	-35.07	<2e-16 ***
Treatment	0.0069107	0.0001505	45.92	<2e-16 ***
Replication	0.2699006	0.0140553	19.20	<2e-16 ***

	DL 50	LI	LS
Replication	147.394	169.454	128.269
Replication	108.606	86.959	132.849
Replication	69.818	45.650	96.245

Isolate Patient 53

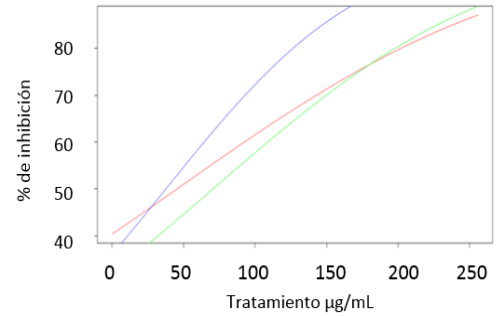


Coefficients:

	Estimate	Std. Error	z value	Pr(> z)
(Intercept)	-0.9435694	0.0412931	-22.851	< 2e-16 ***
tratamiento	0.0058480	0.0001648	35.488	< 2e-16 ***
bloques	0.0463504	0.0179795	2.578	0.00994 **

	DL 50	LI	LS
Bloque 1	152.565	126.583	183.415
Bloque 2	144.808	113.379	181.384
Bloque 3	137.050	100.175	179.352

Isolate Patient 10

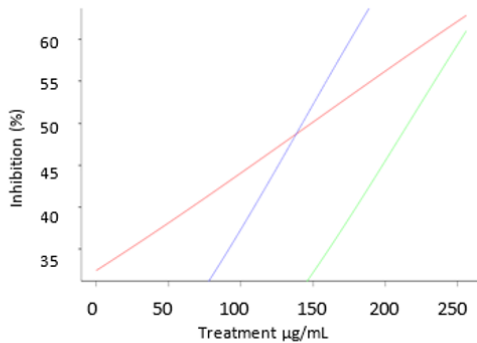


Coefficients:

	Estimate	Std. Error	z value	Pr(> z)
(Intercept)	-0.2244816	0.0343326	-6.538	6.22e-11 ***
tratamiento	0.0066629	0.0001775	37.540	< 2e-16 ***
bloques	-0.0574359	0.0154318	-3.722	0.000198 ***

	DL 50	LI	LS
Bloque 1	41.373	26.351	59.948
Bloque 2	51.717	30.246	73.789
Bloque 3	59.474	87.630	34.141

Isolate Patient 18

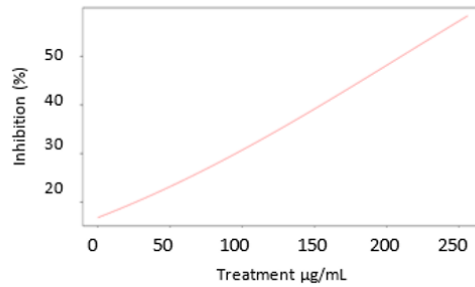


Coefficients:

	Estimate	Std. Error	z value	Pr(> z)
(Intercept)	-0.3154095	0.0797853	-3.953	7.71e-05 ***
Treatment	0.0055721	0.0003429	16.248	< 2e-16 ***
Replication	-0.3267237	0.0381657	-8.561	< 2e-16 ***

	DL 50	LI	LS
Replication	116.363	65.944	178.077
Replication	173.252	106.347	259.965
Replication	232.727	146.749	341.853

Isolate Patient 11

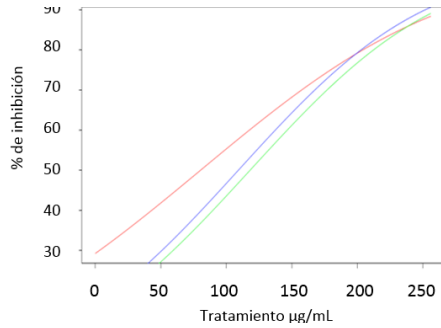


Coefficients:

	Estimate	Std. Error	z value	Pr(> z)
(Intercept)	-1.0200130	0.0871962	-11.70	< 2e-16 ***
Treatment	0.0045620	0.0003544	12.87	< 2e-16 ***
Replication	0.0312841	0.0381684	0.82	0.412

	DL 50	LI	LS
Replication	209.454	165.111	272.061

Isolate Patient 2

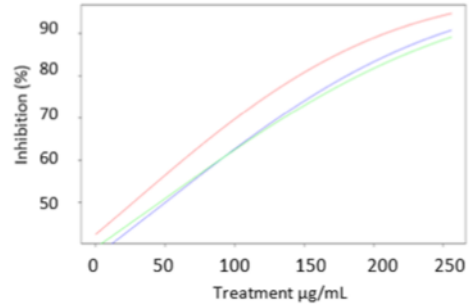


Coefficients:

	Estimate	Std. Error	z value	Pr(> z)
(Intercept)	-0.5282988	0.0503333	-10.496	< 2e-16 ***
tratamiento	0.0083127	0.0002304	36.082	< 2e-16 ***
bloques	-0.1688717	0.0220336	-7.664	1.8e-14 ***

	DL 50	LI	LS
Bloque 1	82.747	63.454	106.559
Bloque 2	103.434	77.831	133.472
Bloque 3	124.121	92.208	160.385

Isolate Patient 57

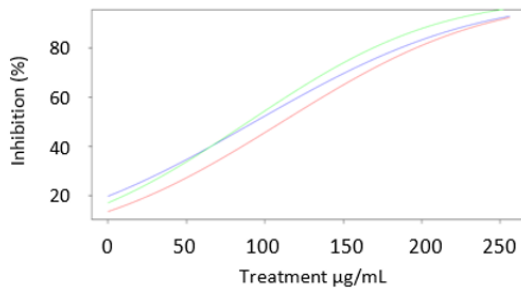


Coefficients:

	Estimate	Std. Error	z value	Pr(> z)
(Intercept)	-0.0860555	0.0575734	-1.495	0.13499
Treatment	0.0065633	0.0003229	20.324	< 2e-16 ***
Replication	-0.0885944	0.0272656	-3.249	0.00116 **

	DL 50	LI	LS
Replication	25.858	1.119	57.268
Replication	41.373	6.006	81.108
Replication	54.303	10.892	104.948

Isolate Patient 40

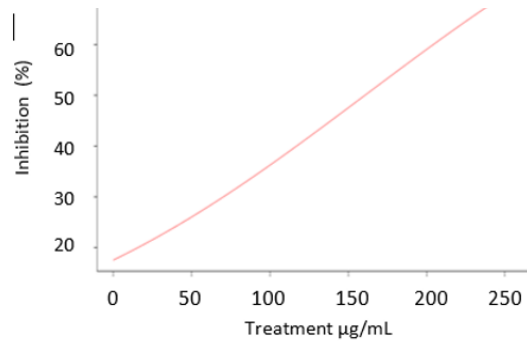


Coefficients:

	Estimate	Std. Error	z value	Pr(> z)
(Intercept)	-1.1478090	0.0563882	-20.355	< 2e-16 ***
Treatment	0.0096620	0.0002657	36.369	< 2e-16 ***
Replication	0.1053848	0.0254454	4.142	3.45e-05 ***

	DL 50	LI	LS
Replication	108.606	86.657	131.418
Replication	98.262	71.342	125.399
Replication	85.333	56.027	119.381

Isolate Patient 36

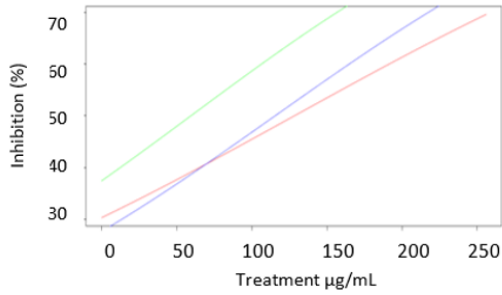


Coefficients:

	Estimate	Std. Error	z value	Pr(> z)
(Intercept)	-0.9452154	0.0396696	-23.83	< 2e-16 ***
Treatment	0.0058000	0.0001572	36.91	< 2e-16 ***
Replication	0.0072691	0.0169221	0.43	0.668

	DL 50	LI	LS
Replication	160.323	145.951	176.511

Isolate Patient 23

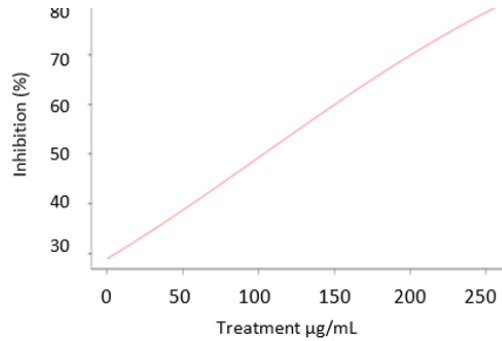


Coefficients:

	Estimate	Std. Error	z value	Pr(> z)
(Intercept)	-0.8048699	0.0438094	-18.372	<2e-16 ***
Treatment	0.0048875	0.0001788	27.338	<2e-16 ***
Replication	0.1621786	0.0179765	9.022	<2e-16 ***

	DL 50	LI	LS
Replication	131.878	99.693	168.145
Replication	98.262	61.986	140.181
Replication	64.646	24.279	112.216

Isolate Patient 60

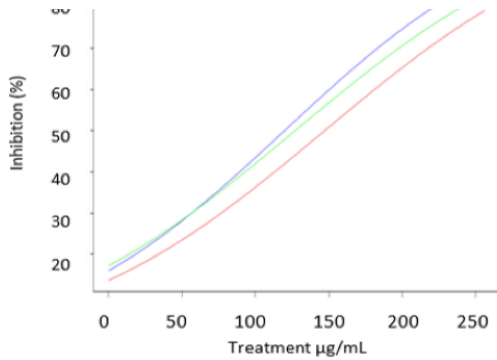


Coefficients:

	Estimate	Std. Error	z value	Pr(> z)
(Intercept)	-0.5482059	0.0549694	-9.973	<2e-16 ***
Treatment	0.0053810	0.0002354	22.862	<2e-16 ***
Replication	-0.0035630	0.0237259	-0.150	0.881

	DL 50	LI	LS
Replication	103.434	85.975	123.624

Isolate Patient 41

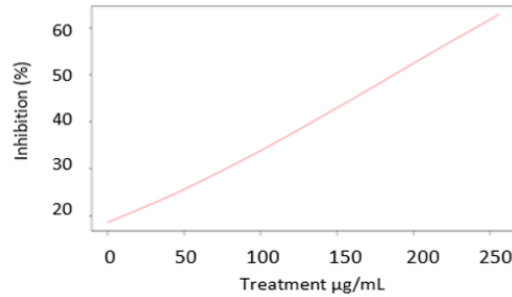


Coefficients:

	Estimate	Std. Error	z value	Pr(> z)
(Intercept)	-1.1632422	0.0466028	-24.961	< 2e-16 ***
Treatment	0.0076343	0.0002067	36.942	< 2e-16 ***
Replication	0.0755058	0.0195855	3.855	0.000116 ***

	DL 50	LI	LS
Replication	142.222	119.217	168.335
Replication	131.878	105.047	163.199
Replication	121.535	90.876	158.062

Isolate Patient 42

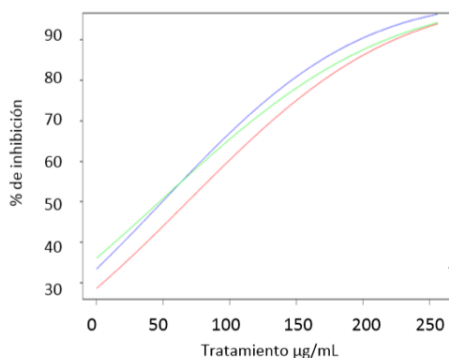


Coefficients:

	Estimate	Std. Error	z value	Pr(> z)
(Intercept)	-0.9316093	0.0417345	-22.322	<2e-16 **
Treatment	0.0047669	0.0001477	32.266	<2e-16 **
Replication	0.0178563	0.0170924	1.045	0.296

	DL 50	LI	LS
Replication	186.182	169.161	207.799

Control Group2

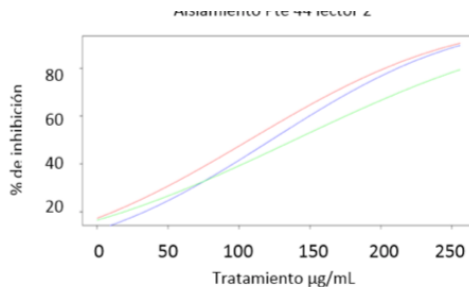


Coefficients:

	Estimate	Std. Error	z value	Pr(> z)
(Intercept)	-0.597133	0.031038	-19.239	< 2e-16 ***
tratamiento	0.008109	0.000158	51.307	< 2e-16 ***
bloques	0.075481	0.012979	5.815	6.05e-09 ***

	DL 50	LI	LS
Bloque 1	64.646	51.784	77.815
Bloque 2	54.303	39.770	71.418
Bloque 3	46.545	27.757	65.021

Isolate Patient 44

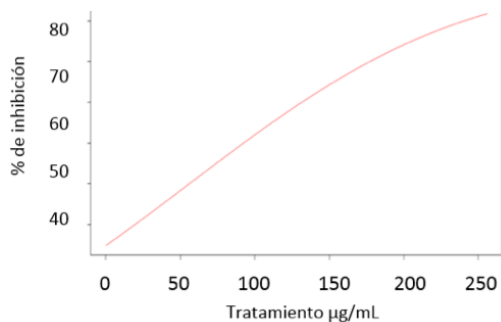


Coefficients:

	Estimate	Std. Error	z value	Pr(> z)
(Intercept)	-0.8320812	0.0321049	-25.918	< 2e-16 ***
tratamiento	0.0083683	0.0001473	56.806	< 2e-16 ***
bloques	-0.0949337	0.0142564	-6.659	2.76e-11 ***

	DL 50	LI	LS
Bloque 1	111.191	96.647	125.898
Bloque 2	121.535	104.406	141.078
Bloque 3	134.464	112.165	156.259

Isolate Patient 48

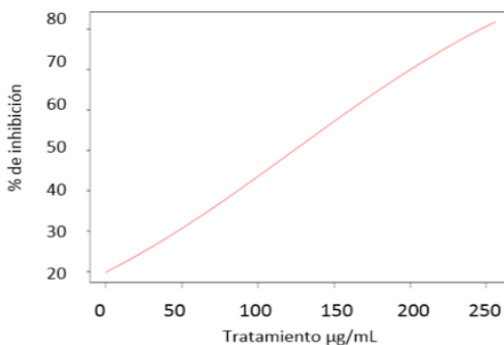


Coefficients:

	Estimate	Std. Error	z value	Pr(> z)
(Intercept)	-0.4175882	0.0371393	-11.24	< 2e-16 ***
tratamiento	0.0069462	0.0001841	37.73	< 2e-16 ***
bloques	0.0139521	0.0156811	0.89	0.374

	DL 50	LI	LS
Bloque 1	56.888	64.379	48.361

Isolate Patient 50

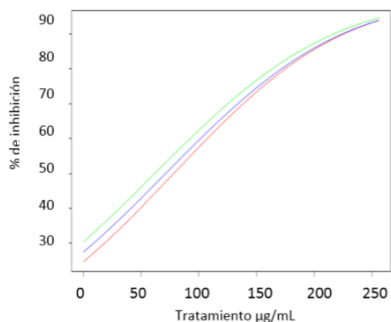


Coefficients:

	Estimate	Std. Error	z value	Pr(> z)
(Intercept)	-0.7916456	0.0392656	-20.161	< 2e-16 ***
tratamiento	0.0068593	0.0001707	40.181	< 2e-16 ***
bloques	-0.0276865	0.0168688	-1.641	0.101

	DL 50	LI	LS
Bloque 1	124.121	112.348	135.858

Isolate Patient 26

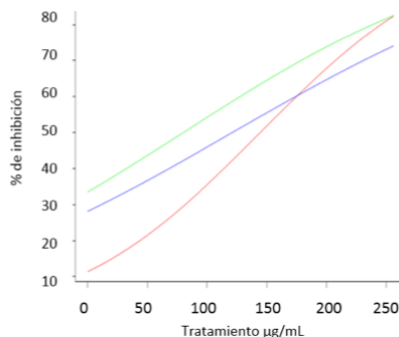


Coefficients:

	Estimate	Std. Error	z value	Pr(> z)
(Intercept)	-0.7358515	0.0328646	-22.390	< 2e-16 ***
tratamiento	0.0084262	0.0001552	54.303	< 2e-16 ***
bloques	0.0706086	0.0137278	5.143	2.7e-07 ***

	DL 50	LI	LS
Bloque 1	80.161	65.803	93.028
Bloque 2	69.818	54.610	87.665
Bloque 3	62.060	43.417	82.302

Isolate Patient 61

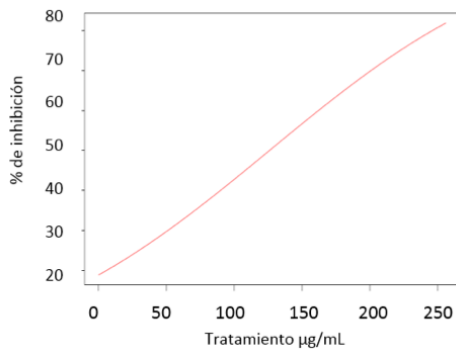


Coefficients:

	Estimate	Std. Error	z value	Pr(> z)
(Intercept)	-1.2207434	0.0801513	-15.230	< 2e-16 ***
tratamiento	0.0060390	0.0003283	18.397	< 2e-16 ***
bloques	0.2502107	0.0327201	7.647	2.06e-14 ***

	DL 50	LI	LS
Bloque 1	160.323	112.082	220.810
Bloque 2	118.949	64.933	186.436
Bloque 3	77.575	17.783	152.062

Isolate Patient 63

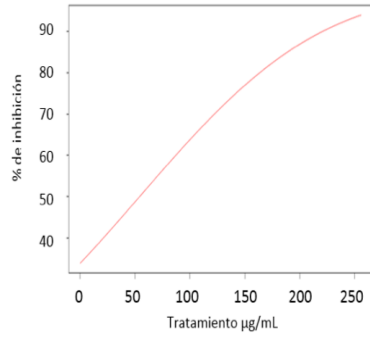


Coefficients:

	Estimate	Std. Error	z value	Pr(> z)
(Intercept)	-2.08564	0.07403	-28.173	<2e-16 ***
tratamiento	0.46592	0.01309	35.596	<2e-16 ***
bloques	0.04674	0.02502	1.868	0.0618

	DL 50	LI	LS
Bloque 1	126.707	110.989	143.105

Control Group3

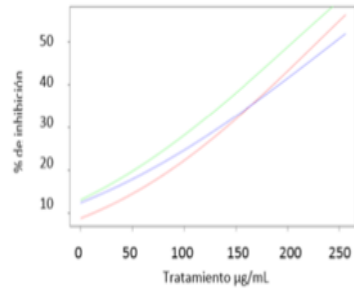


Coefficients: Estimate Std. Error z value Pr(>|z|)

(Intercept)	-0.3443794	0.0716944	-4.803	1.56e-06 ***
tratamiento	0.0077024	0.0003838	20.067	< 2e-16 ***
bloques	-0.0376051	0.0319305	-1.178	0.239

	DL 50	LI	LS
Bloque 1	54.303	41.104	69.941

Isolate Patient 43



Coefficients: Estimate Std. Error z value Pr(>|z|)

(Intercept)	-1.3858674	0.0418221	-33.137	< 2e-16 ***
tratamiento	0.0052959	0.0001529	34.639	< 2e-16 ***
bloques	0.0910909	0.0175906	5.178	2.24e-07 ***

	DL 50	LI	LS
Bloque 1	245.656	210.459	282.696
Bloque 2	227.555	188.025	271.358
Bloque 3	209.454	165.590	260.020