

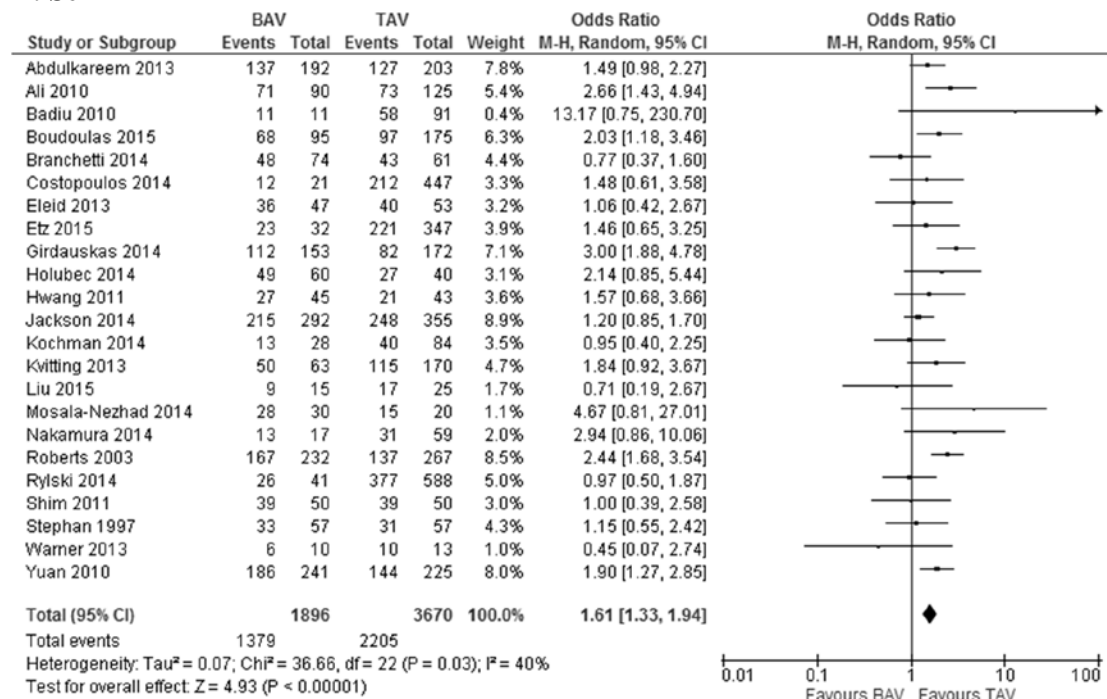
SUPPLEMENTAL MATERIAL

Impact of Valve Morphology On the Prevalence of Coronary Artery Disease:

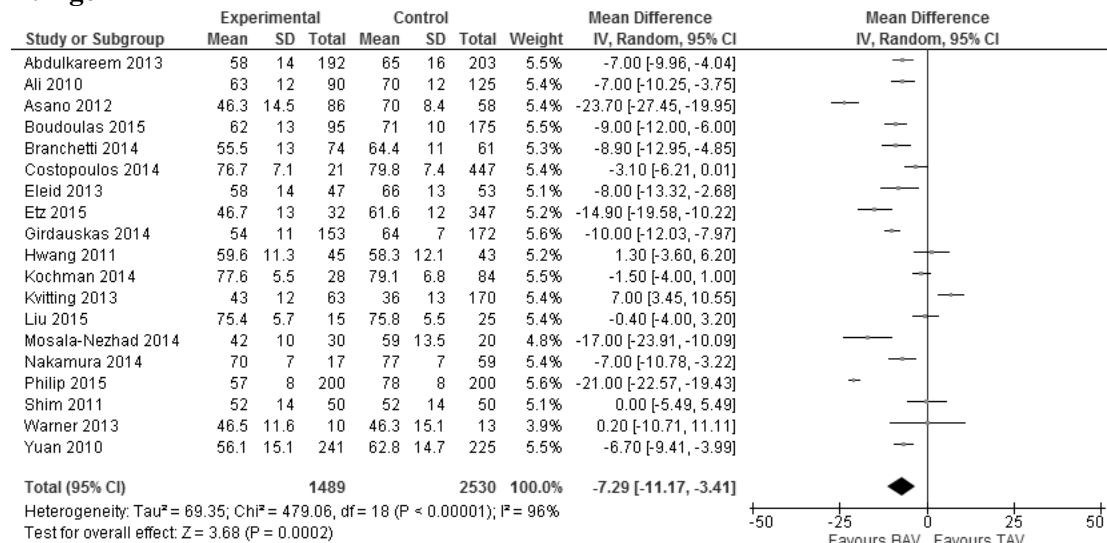
A Systematic Review and Meta-Analysis

Figure S1. Distribution of major clinical and demographic characteristics in patients with bicuspid (BAV) and tricuspid aortic valve (TAV). (A) sex, (B) age, (C) hypertension, (D) diabetes, (E) hyperlipidemia, (F) BMI and (F) smoking.

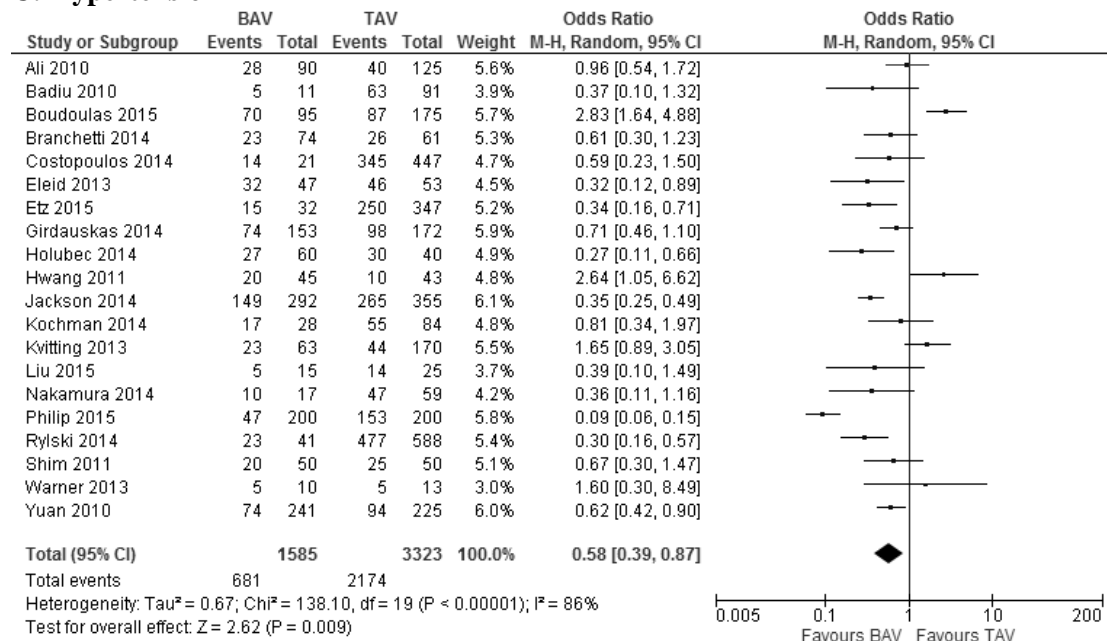
A: Sex



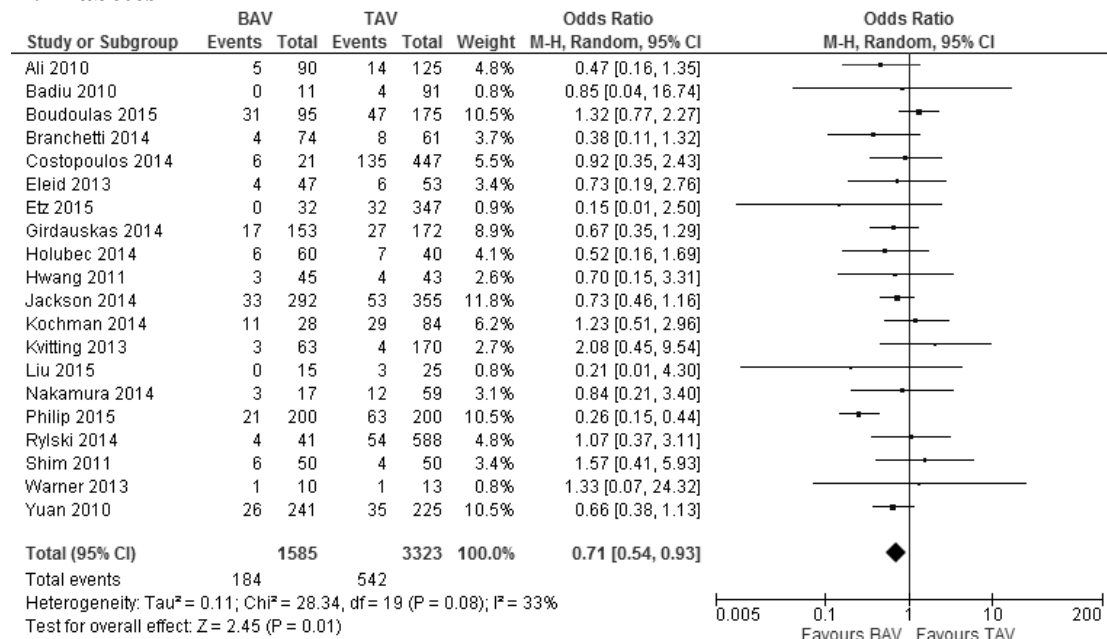
B: Age



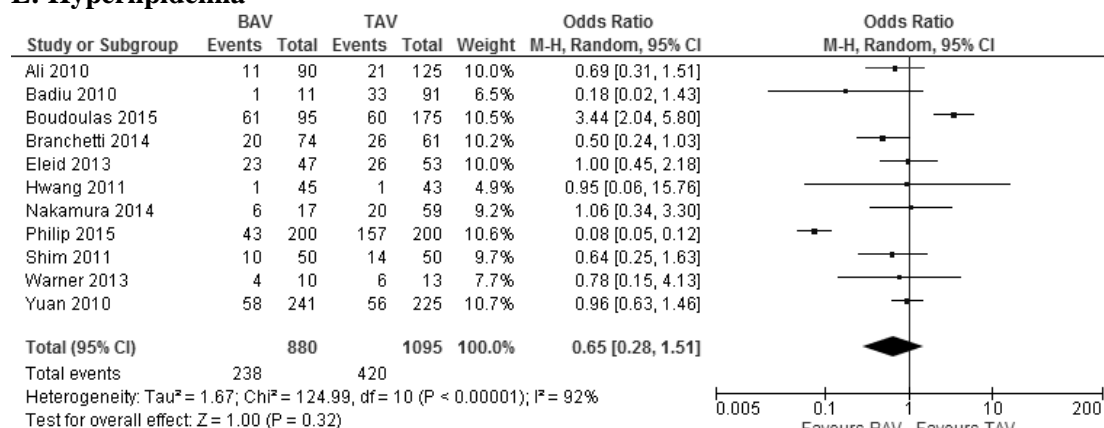
C: Hypertension



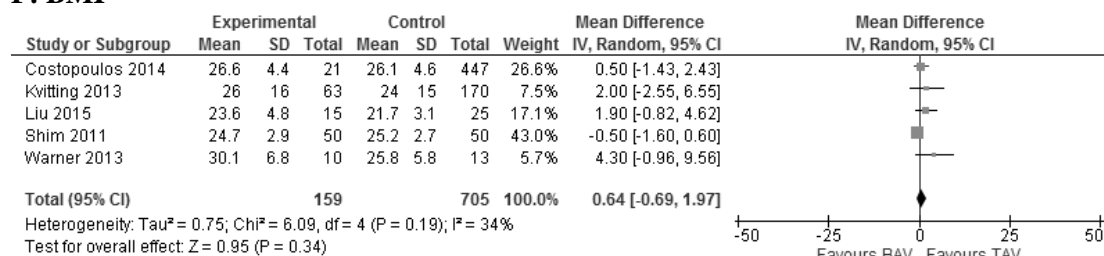
D: Diabetes



E: Hyperlipidemia



F: BMI



G: Smoking habit

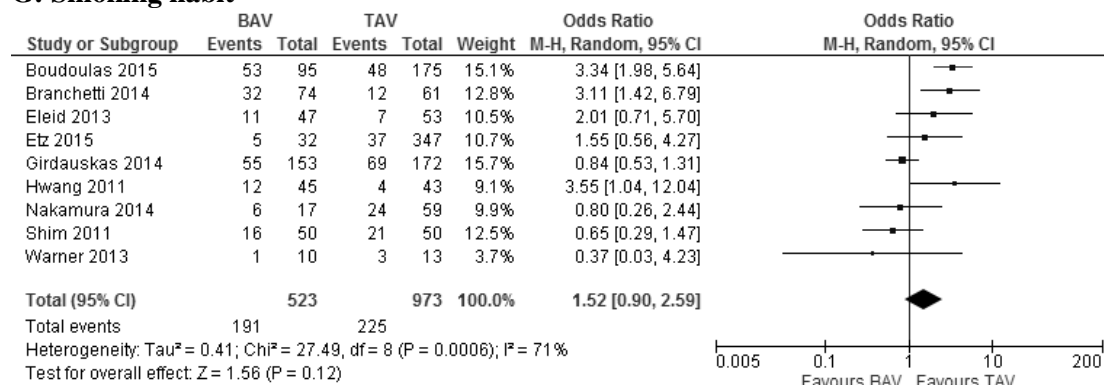
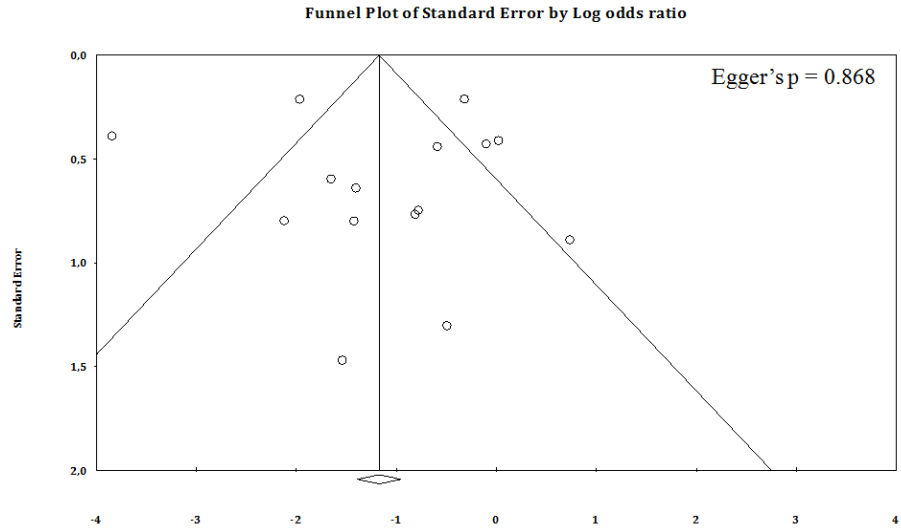
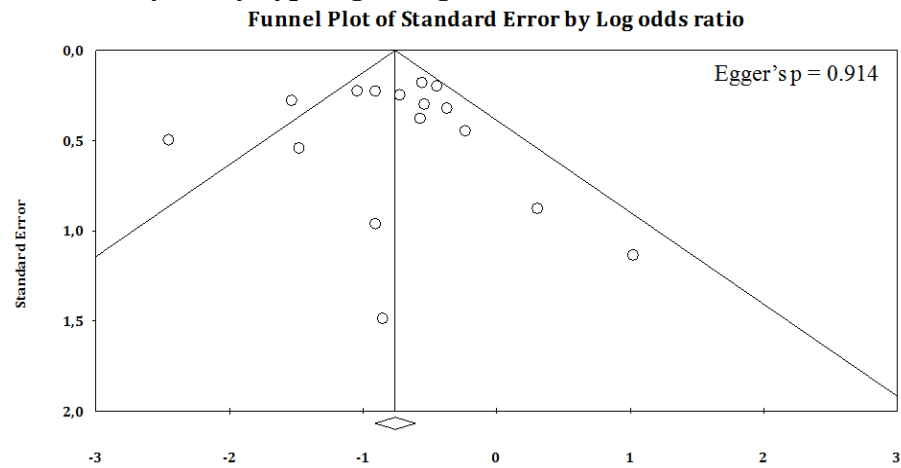


Figure S2. Funnel plots of effect size versus standard error for studies evaluating the prevalence of coronary artery disease (A), coronary artery bypass grafting (B), post-operative mortality (C) in patients with bicuspid (BAV) and tricuspid aortic valve (TAV).

A: Coronary artery disease



B: Coronary artery bypass grafting



C: Post-operative mortality

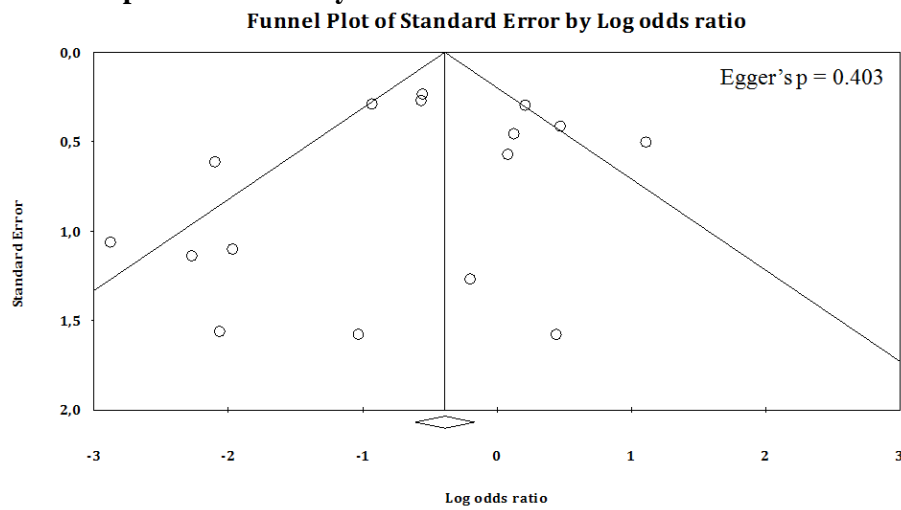


Table S1. Summary table of meta-analysis results

Outcome	Number of studies	Effect size
CAD	15 studies 1,163 BAV and 2,234 TAV	OR: 0.33, 95% CI: 0.17, 0.65, p = 0.001
CABG	16 studies 1,782 BAV and 1,886 TAV	OR: 0.45, 95% CI: 0.35, 0.59, p < 0.001
Mortality	16 studies 1067 BAV and 2399 TAV	OR: 0.62, 95% CI: 0.40, 0.97, p = 0.04
Age	19 studies 1489 BAV and 2530 TAV	MD: -7.29, 95% CI: -11.17, -3.41, p < 0.001
Male gender	23 studies 1896 BAV and 3670 TAV	OR: 1.61, 95% CI: 1.33, 1.94, p < 0.001
Hypertension	20 studies 1585 BAV and 3323 TAV	OR: 0.58, 95% CI: 0.39, 0.87, p < 0.001
Diabetes	20 studies 1585 BAV and 3323 TAV	OR: 0.71, 95% CI: 0.54, 0.93, p = 0.01
Hyperlipidemia	11 studies 880 BAV and 1095 TAV	OR: 0.65, 95% CI: 0.28, 1.51, p = 0.32
BMI	5 studies 159 BAV and 705 TAV	MD: 0.64, 95% CI: -0.69, 1.97, p = 0.34
Smoking habit	9 studies 523 BAV and 973 TAV	OR: 1.52, 95% CI: 0.90, 2.59, p = 0.12

CAD: coronary artery disease; CABG: Coronary artery bypass grafting; BMI: body mass index; BAV: bicuspid aortic valve; TAV; tricuspid aortic valve; OR: odds ratio; MD: mean difference; 95% CI: 95% confidence intervals