

Supplementary information

Title The changing shape of vaccination: improving immune responses through geometrical variations of a microdevice for immunization

Michael Lawrence Crichton, David Alexander Muller*, Alexandra Christina Isobel*

Depelsenaire, Frances Elizabeth Pearson, Jonathan Wei, Jacob Coffey, Jin Zhang, Germain

JP Fernando, Mark Anthony Fernance Kendall†

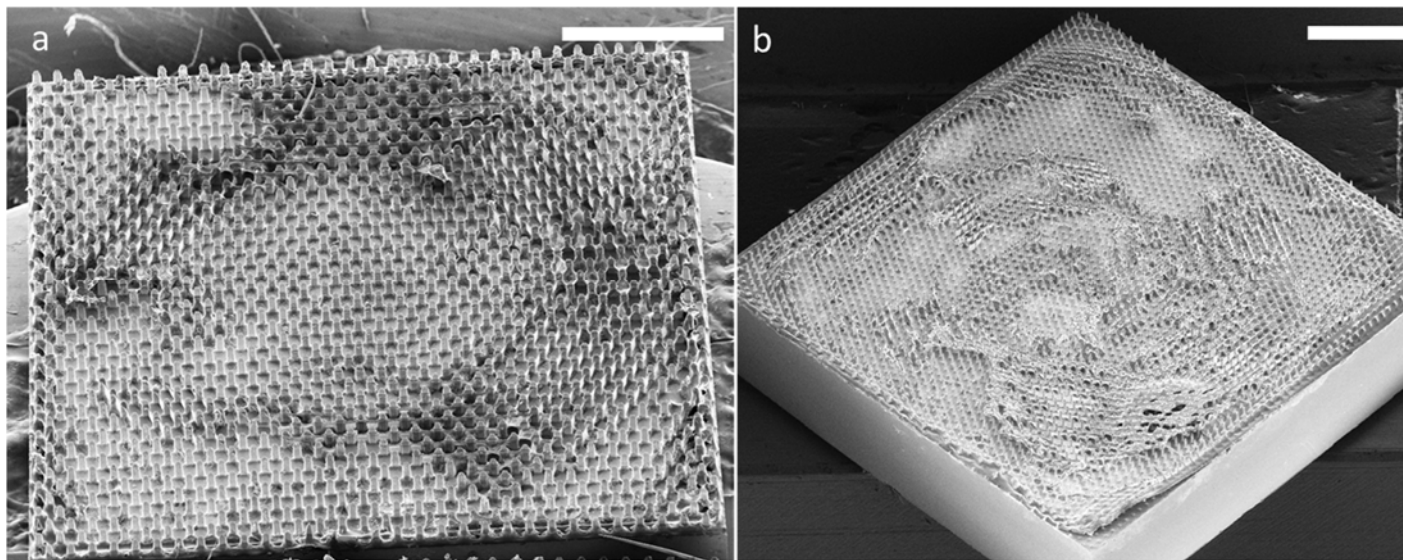


Figure S1 Caption: SEM image of TP and NP (a,b respectively) at low magnification showing the variation in vaccine coating release over the surface of the patch. Bright areas represent areas where coating has removed more completely whilst darker areas are still partially vaccine coated. Bar = 100 μm

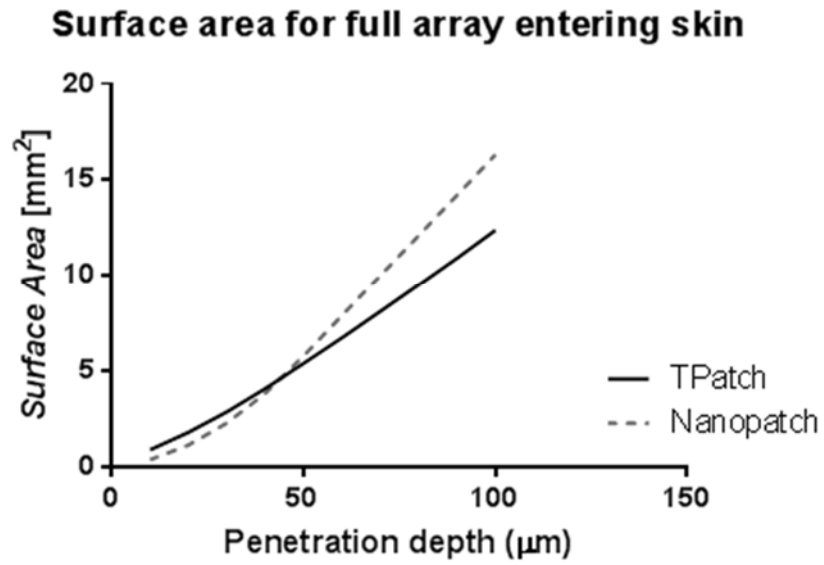


Figure S2 – Surface area of projections/protrusions entering skin for either the TP or NP, showing the similarities at the depths that patches reach in this study.