

Inhibition of Osteoclast Differentiation and Bone Resorption by Bisphosphonate-conjugated Gold Nanoparticles

Donghyun Lee^{1,+}, Dong Nyoung Heo^{3,+}, Han-Jun Kim⁴, Wan-Kyu Ko¹, Sang Jin Lee¹, Min Heo¹, Jae Beum Bang⁵, Jung Bok Lee⁶, Deok-Sang Hwang⁷, Sun Hee Do^{4,*} and Il Keun Kwon^{2,*}

¹Kyung Hee University, Department of Dentistry, Graduate School, 26, Kyungheedaero, Dongdaemun-gu, Seoul 02477, Korea

²Kyung Hee University, Department of Dental Materials, School of Dentistry, 26, Kyungheedaero, Dongdaemun-gu, Seoul 02477, Korea

³The George Washington University, Department of Mechanical and Aerospace Engineering, Washington DC 20052, United states

⁴Konkuk University, Department of Clinical Pathology, College of Veterinary Medicine, Seoul 05029, Korea

⁵Kyung Hee University, Department of Dental Education, School of Dentistry, 26, Kyungheedaero, Dongdaemun-gu, Seoul 02477, Korea

⁶Vanderbilt University, Department of Biomedical Engineering, Nashville, TN 37235, United States

⁷Department of Korean Gynecology, Conmaul Hospital, Kyung Hee University, Seoul 02477, Korea

*Correspondence and requests for materials should be addressed to S.H. (email: shdo@konkuk.ac.kr) and I. K. (email: kwoni@khu.ac.kr)

⁺These authors contributed equally to this work.

Supplementary Figure captions

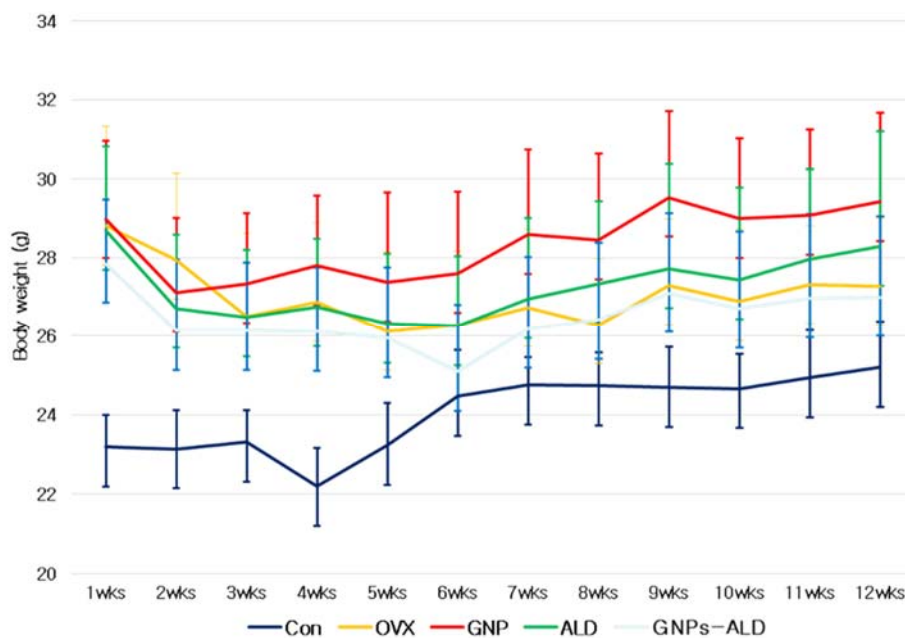
Supplementary Figure S1. Body weight changes in control mouse (Con), OVX mouse receiving no treatment (OVX), gold nanoparticles (GNPs), alendronate (ALD) and alendronate-conjugated gold nanoparticles (GNPs-ALD) for 12 weeks. Each point represents the mean \pm SD, error bars in the figure are presented as SD, n=8.

Supplementary Figure S2. Micro-computed tomography (μ -CT) image of Con (A), OVX (B), GNPs (C), ALD (D) and GNPs-ALD (E).

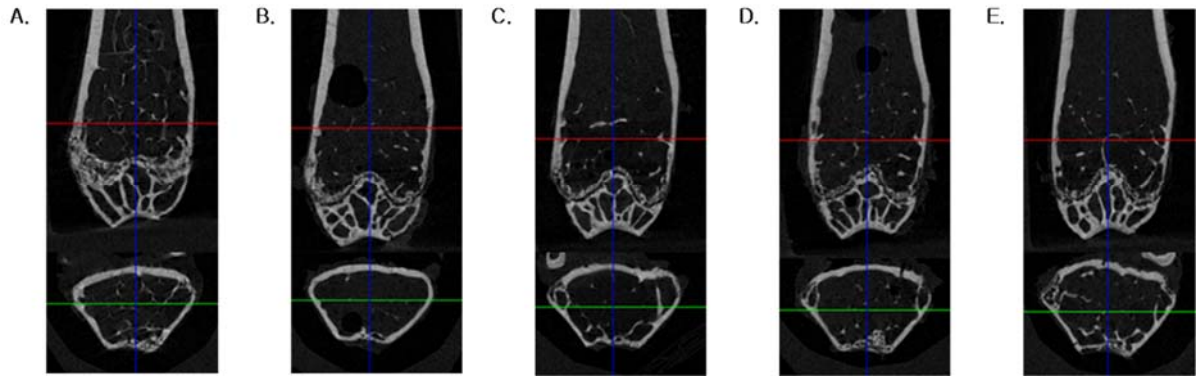
Supplementary Figure S3. Evaluation of cytotoxicity of BMM cells on high concentrations of GNPs (A) and ALD (B). Results are mean \pm SD of triplicate experiments.

Supplementary Figures

S1.



S2.



S3.

