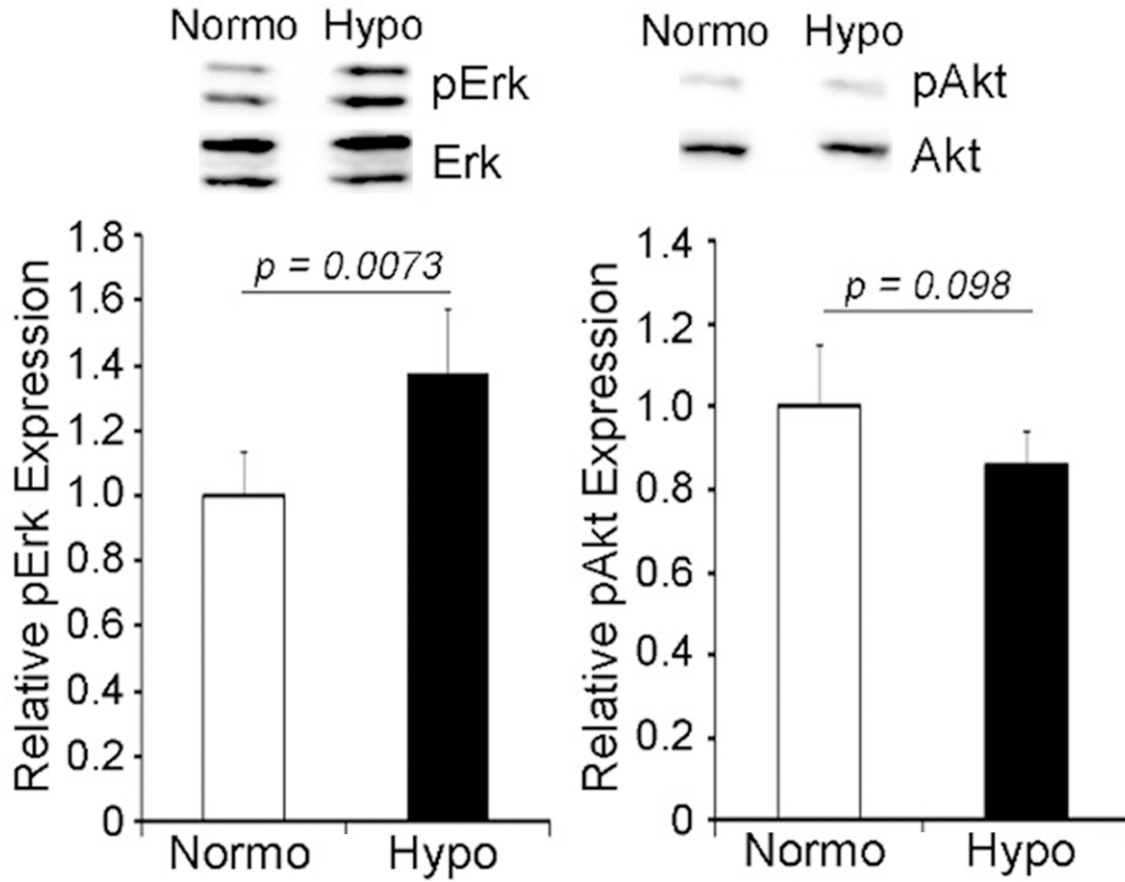


Autologous implantation of preconditioned cell sheets



**Figure S1.** Hypoxic preconditioning accelerates the Erk-mediated pathway in rabbit BM-MSC sheets but not the Akt-mediated pathway. Rabbit BM-MSC sheets were incubated in hypoxic condition for 48 hours, and then Western blot analysis for Erk and Akt-mediated signaling pathway was performed. Phosphorylated Erk was significantly increased in preconditioned BM-MSC sheets (left), whereas phospho-Akt level showed no significant difference in groups between Normo and Hypo (right). ( $n = 5$ ).