

Supplementary Figures

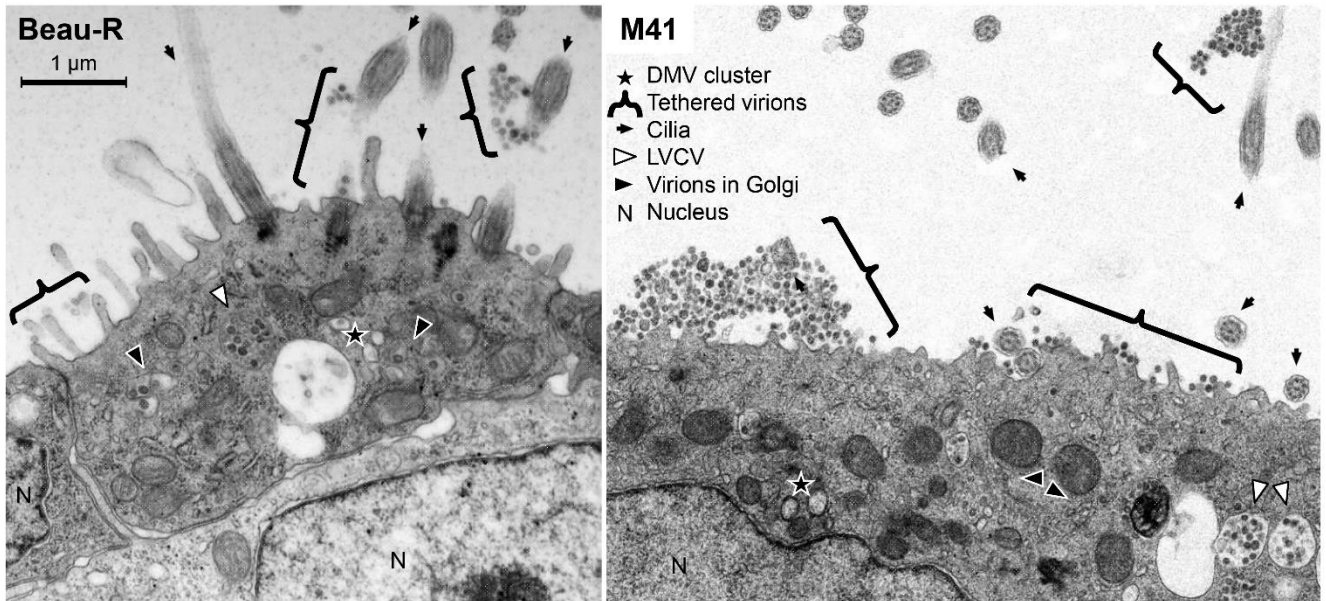
Extensive coronavirus-induced membrane rearrangements are not a determinant of pathogenicity

Helena J. Maier^{1*}, Benjamin W. Neuman², Erica Bickerton¹, Sarah M. Keep¹, Hasan Alrashedi², Ross H. Hall¹ and Paul Britton^{1#}

¹The Pirbright Institute, Pirbright, Surrey, UK; ²School of Biological Sciences, University of Reading, Reading, Berkshire, UK

[#]now retired

*Address correspondence to Helena J. Maier helena.maier@pirbright.ac.uk



Supplementary Figure S1. Overview of markers of virus infection. Tracheal organ culture (TOCs) infected with Beau-R or M41. After 24 hrs, TOCs were fixed and imaged by TEM. Cells were imaged on a low magnification to indicate the extent of markers of virus infection.