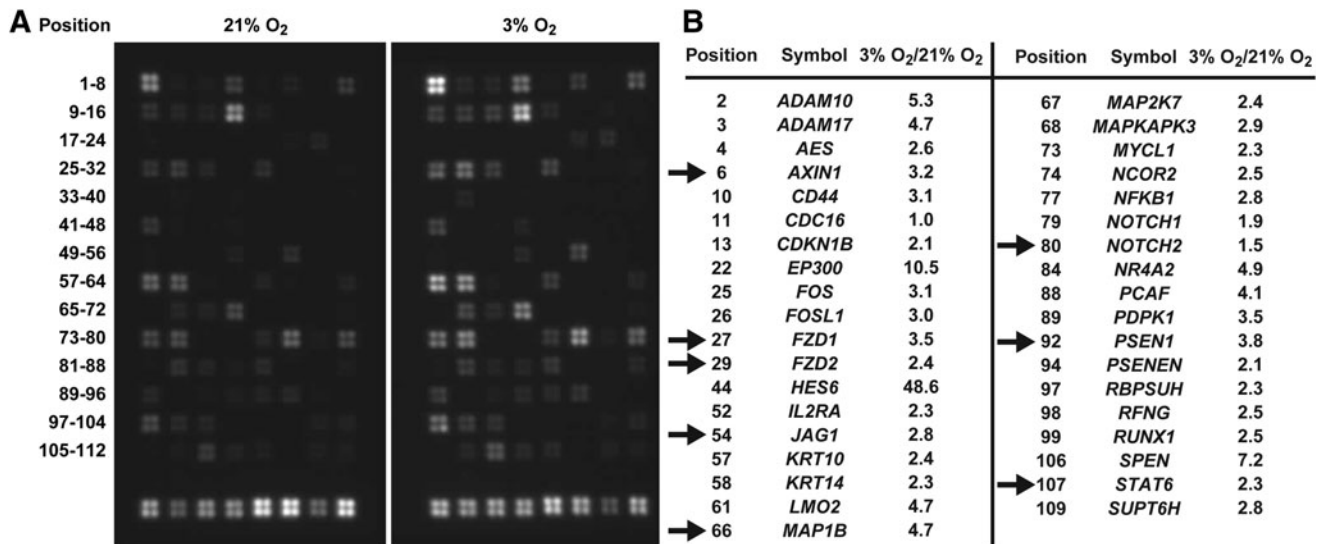


Supplemental Data



SUPPLEMENTARY FIG. S1. (A) Microarray analysis of marrow-isolated adult multilineage inducible cells at 3% and 21% O₂. *Left panel* shows hybridization with the RNA sample from cells grown in 21% O₂. *Right panel* shows hybridization with the RNA sample from cells grown in 3% O₂. The *bottom-most row* of each panel consists of housekeeping genes and the *row* directly above it is the negative controls. (B) Table displays intensity of hybridization as 3% O₂/21% O₂. Genes highlighted with an *arrow* were confirmed to be upregulated at 3% O₂ after RT-qPCR.