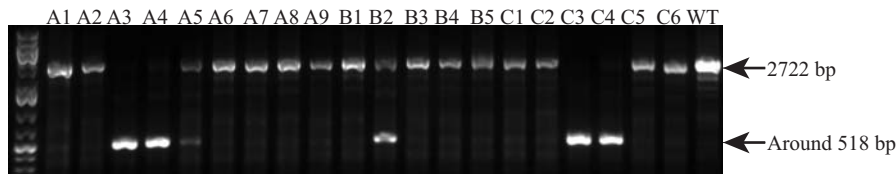


Figure S4 Wang et al.

A

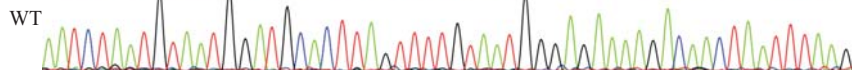


B

Smc1b

.....aatctaattgtaattggaatgcaactingttttgtaattggagagaaaa.....gagagaaa**cccgat**tttttgaagaaatcagttacttcaggagaattt.....

180 190 200 210 220 230
AATCTAATGTAATGGATGCACCTTAGTTTTGTAATGGGAGAAAAGACAACCTAATTTAAG



180 190 200 210 220
AATCTAATGTAATGGATGCACCTTGAAGAAATCAGTACTTCAGGAGAAATTT



180 190 200 210 220
AATCTAATGTAATGGATGCACCTTTTGAAGAAATCAGTACTTCAGGAGAAATTT



180 190 200 210 220
AATCTAATGTAATGGATGCACCTTGAATAAATCAGGACTTTCAGGAGAAATTT



180 190 200 210 220
AATCTAATGTAATGGATGCACCTTAGTTTTGAAAGAAATCAGTACTTTCAGGAGAAATTT



180 190 200 210 220
AATCTAATGTAATGGATGCACCTTAGTTTTGAAAGAAATCAGTACTTTCAGGAGAAATTT



180 190 200 210 220
AATCTAATGTAATGGATGCACCTTAGTTTTGAAAGAAATCAGTACTTTCAGGAGAAATTT



180 190 200 210 220
AATCTAATGTAATGGATGCACCTTAGTTTTGAAAGAAATCAGTACTTTCAGGAGAAATTT