

Supplementary Online Content

Maddox TM, Stanislawski MA, Grunwald GK, et al. Nonobstructive coronary artery disease and risk of myocardial infarction. *JAMA*.

doi:10.1001/jama.2012.9630. 10.1001/jama.2014.14681

eTable. Kaplan-Meier Estimates of 1-Year MI, All-Cause Mortality, and Combined Outcome Rates by Mild Non-Obstructive, Moderate Non-Obstructive, and Obstructive CAD

eFigure 1. Adjusted Cox Model Results for 1-Year MI, Mortality, and Combined MI or Mortality by Mild Non-Obstructive, Moderate Non-Obstructive, and Obstructive CAD, Relative to No Apparent CAD

eFigure 2. Adjusted Cox Model Results for 1-Year MI, Mortality, and Combined MI or Mortality by CAD Extent, Stratified by Diabetes, Relative to No Apparent CAD

eFigure 3. Adjusted Cox Model Results for 1-Year MI, Mortality, and Combined MI or Mortality by CAD Extent, Stratified by Anginal Symptoms, Relative to No Apparent CAD

This supplementary material has been provided by the authors to give readers additional information about their work.

eTable. Kaplan-Meier Estimates of 1-Year MI, All-Cause Mortality, and Combined Outcome Rates by Mild Non-Obstructive, Moderate Non-Obstructive, and Obstructive CAD

	No Apparent CAD ^a	Mild Non-Obstructive CAD	Moderate Non-Obstructive CAD	1-Vessel Obstructive CAD	2-Vessel Obstructive CAD	3-Vessel/Left Main Obstructive CAD
1-Year MI^b, %, (95% CI)	0.11 (0.10, 0.20)	0.39 (0.20, 0.60)	0.50 (0.30, 0.80)	1.19 (1.00, 1.50)	2.25 (1.90, 2.70)	2.50 (2.10, 3.00)
1-Year Mortality, %, (95% CI)	1.38 (1.10, 1.70)	1.89 (1.50, 2.30)	2.17 (1.70, 2.70)	2.24 (1.90, 2.60)	3.40 (2.90, 4.00)	4.33 (3.80, 4.90)
1-Year Combined Outcomes, %, (95% CI)	1.48 (1.20, 1.80)	2.21 (1.80, 2.70)	2.59 (2.10, 3.20)	3.11 (2.70, 3.50)	5.05 (4.50, 5.70)	6.24 (5.60, 6.90)

^aCAD – coronary artery disease; ^bMI – myocardial infarction; ^cCI – confidence interval

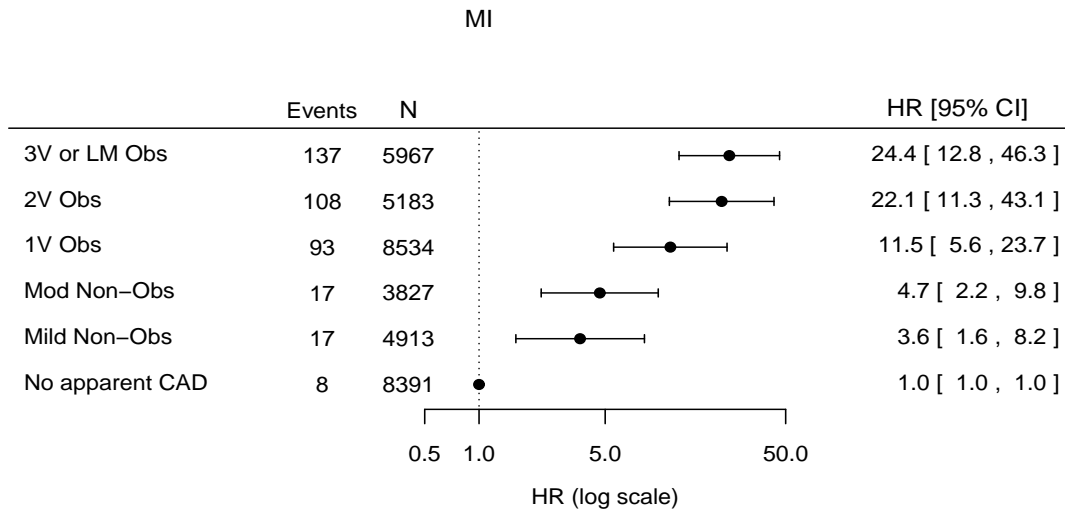
No apparent CAD - coronary stenoses <20% and/or luminal irregularities

Mild Non-Obstructive CAD - maximal coronary stenosis of 20-49%

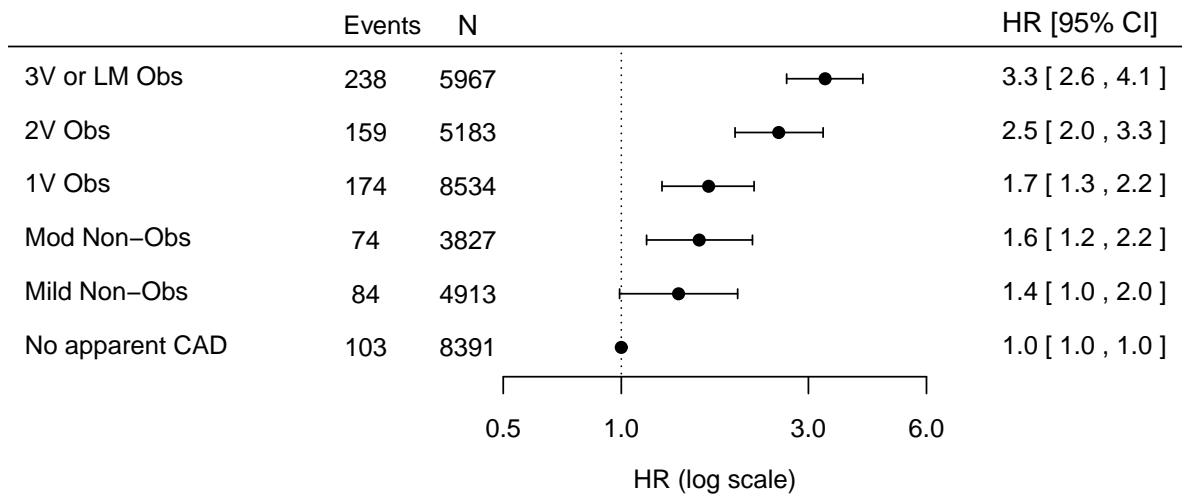
Moderate non-obstructive CAD - maximal coronary stenosis of 50-69%

Obstructive CAD -any stenosis ≥50% in the left main coronary artery and/or ≥70% in any other coronary artery. Patients were categorized by CAD severity in a single, double, or triple-vessel distribution. Patients with ≥50% left main artery stenosis included in 3-vessel obstructive CAD.

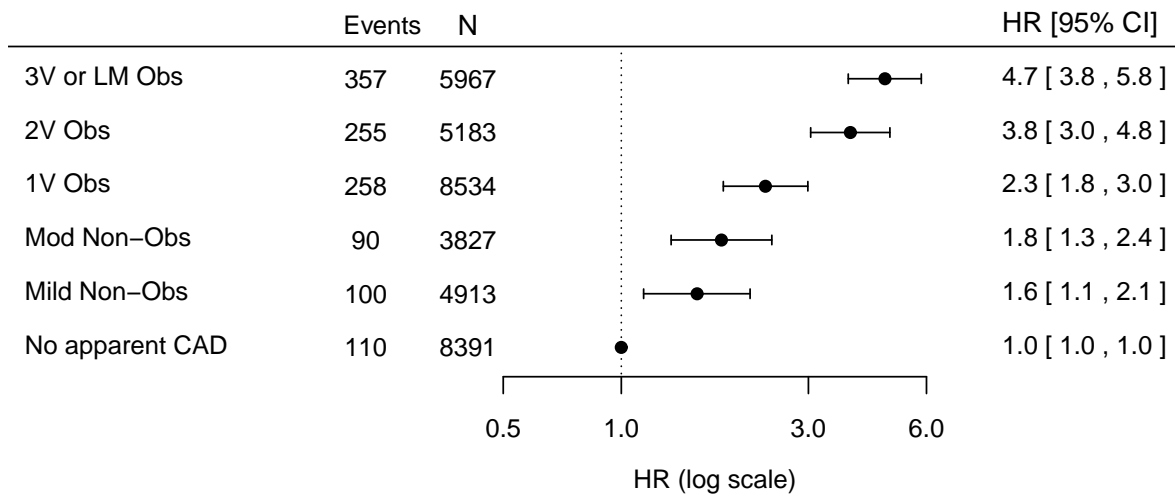
eFigure 1. Adjusted Cox Model Results for 1-Year MI, Mortality, and Combined MI or Mortality by Mild Non-Obstructive, Moderate Non-Obstructive, and Obstructive CAD, Relative to No Apparent CAD



Mortality



Combined MI or Mortality



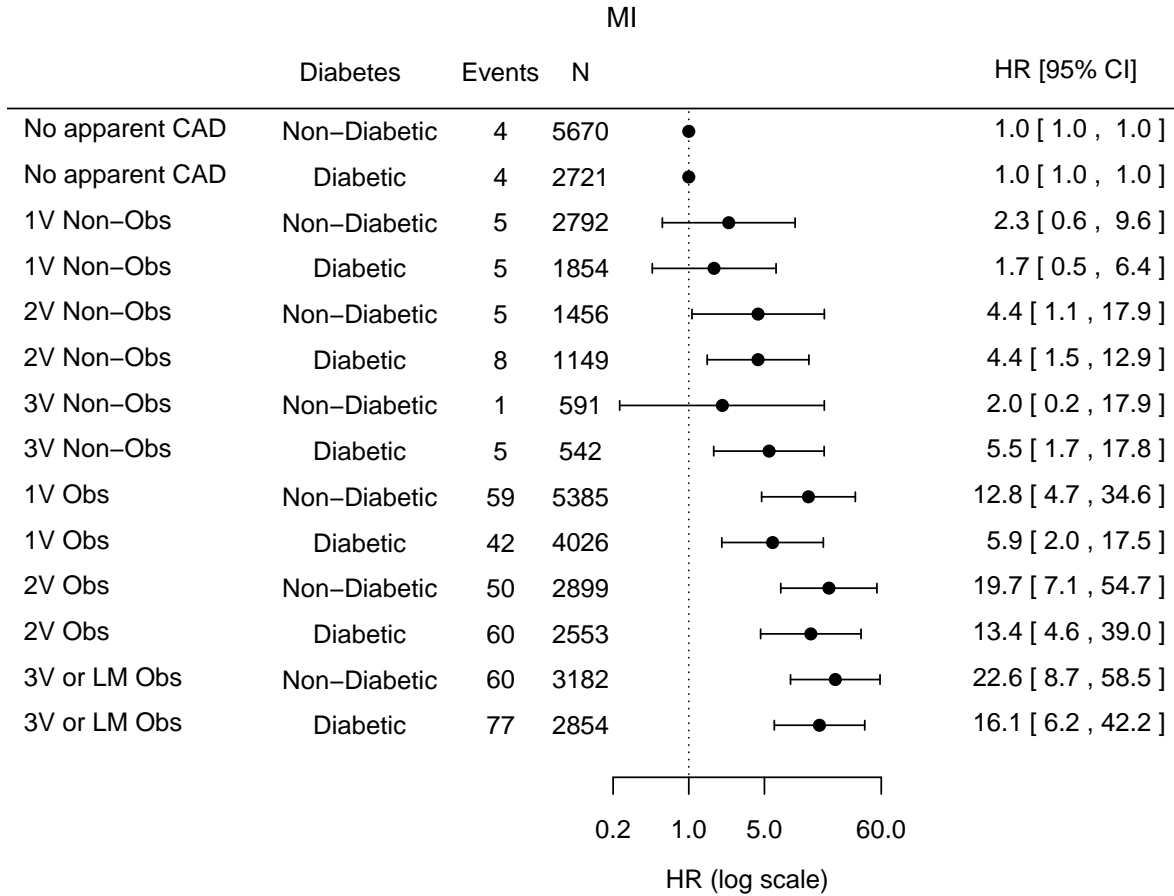
No apparent CAD - coronary stenoses <20% and/or luminal irregularities

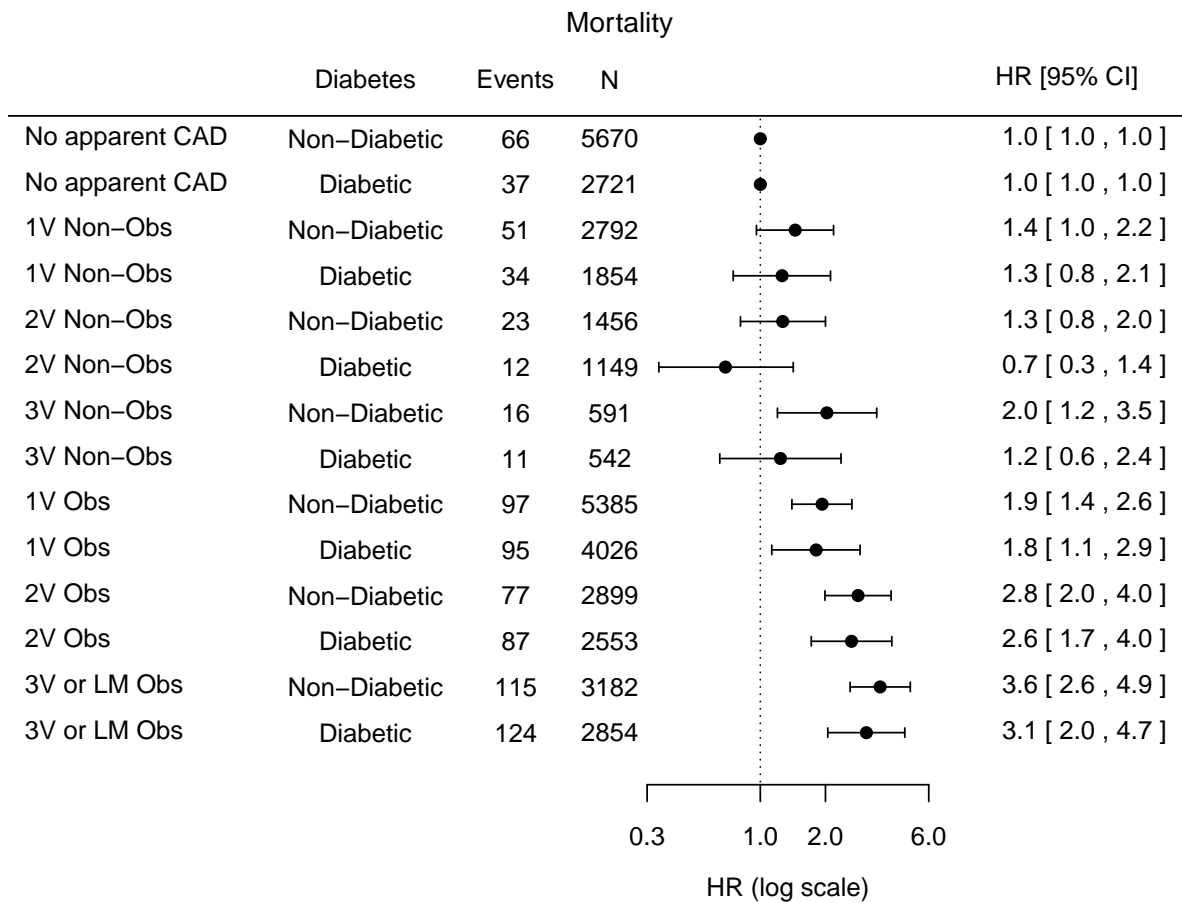
Mild Non-Obstructive CAD - maximal coronary stenosis of 20-49%

Moderate non-obstructive CAD - maximal coronary stenosis of 50-69%

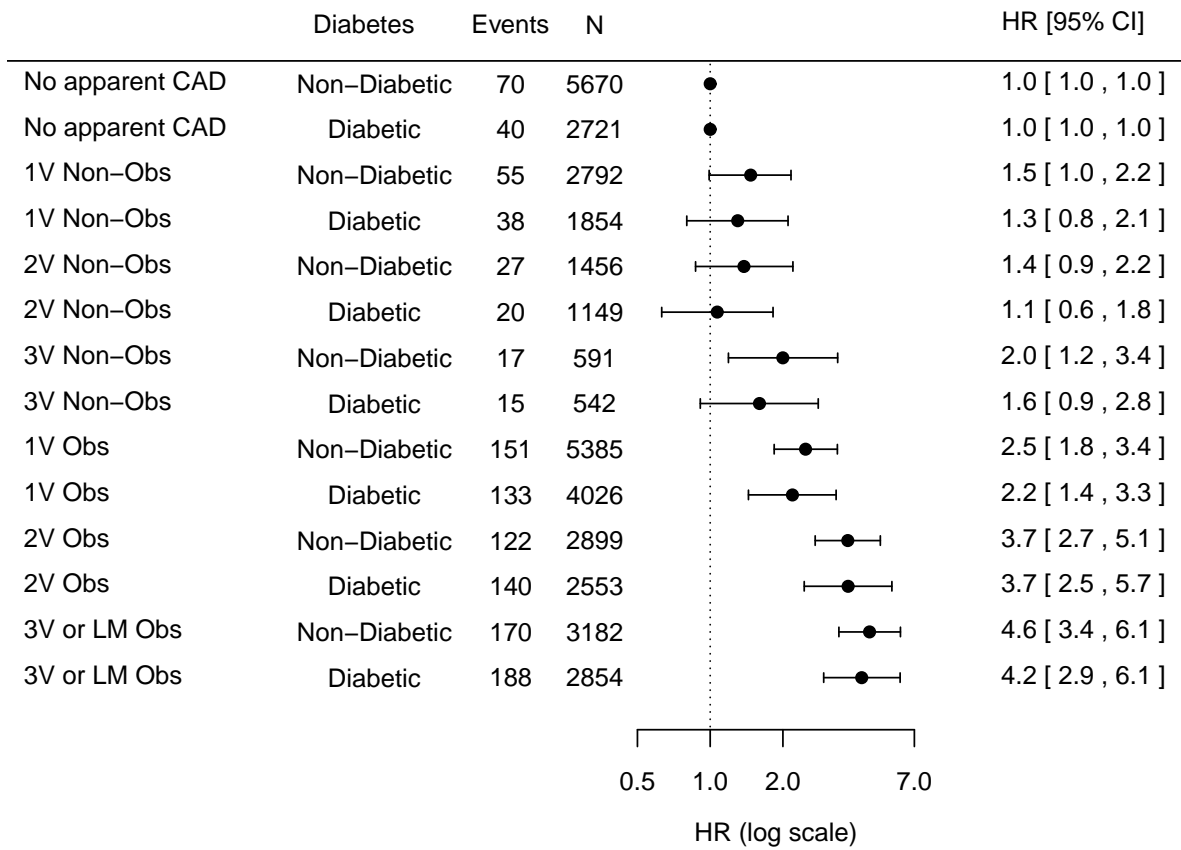
Obstructive CAD -any stenosis ≥50% in the left main coronary artery and/or ≥70% in any other coronary artery. Patients were categorized by CAD severity in a single, double, or triple-vessel distribution. Patients with ≥50% left main artery stenosis included in 3-vessel obstructive CAD.

eFigure 2. Adjusted Cox Model Results for 1-Year MI, Mortality, and Combined MI or Mortality by CAD Extent, Stratified by Diabetes, Relative to No Apparent CAD

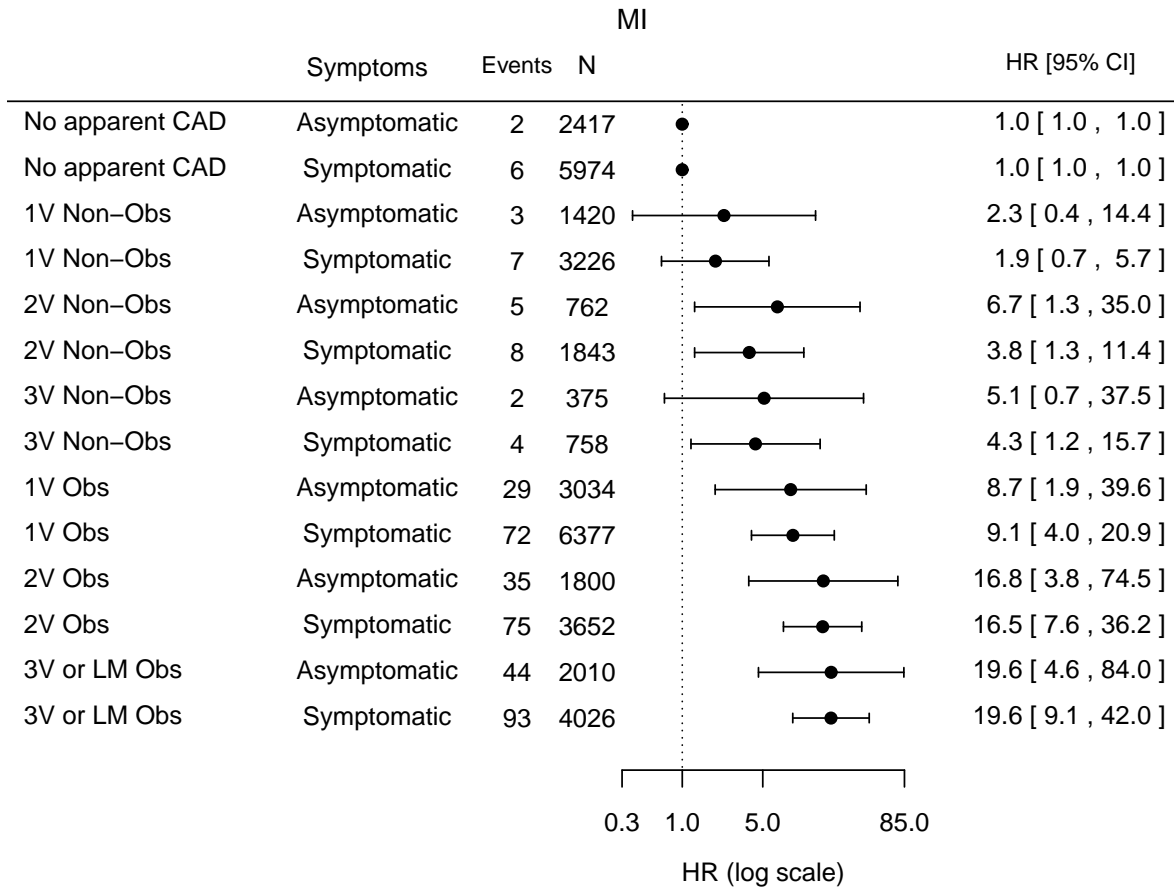


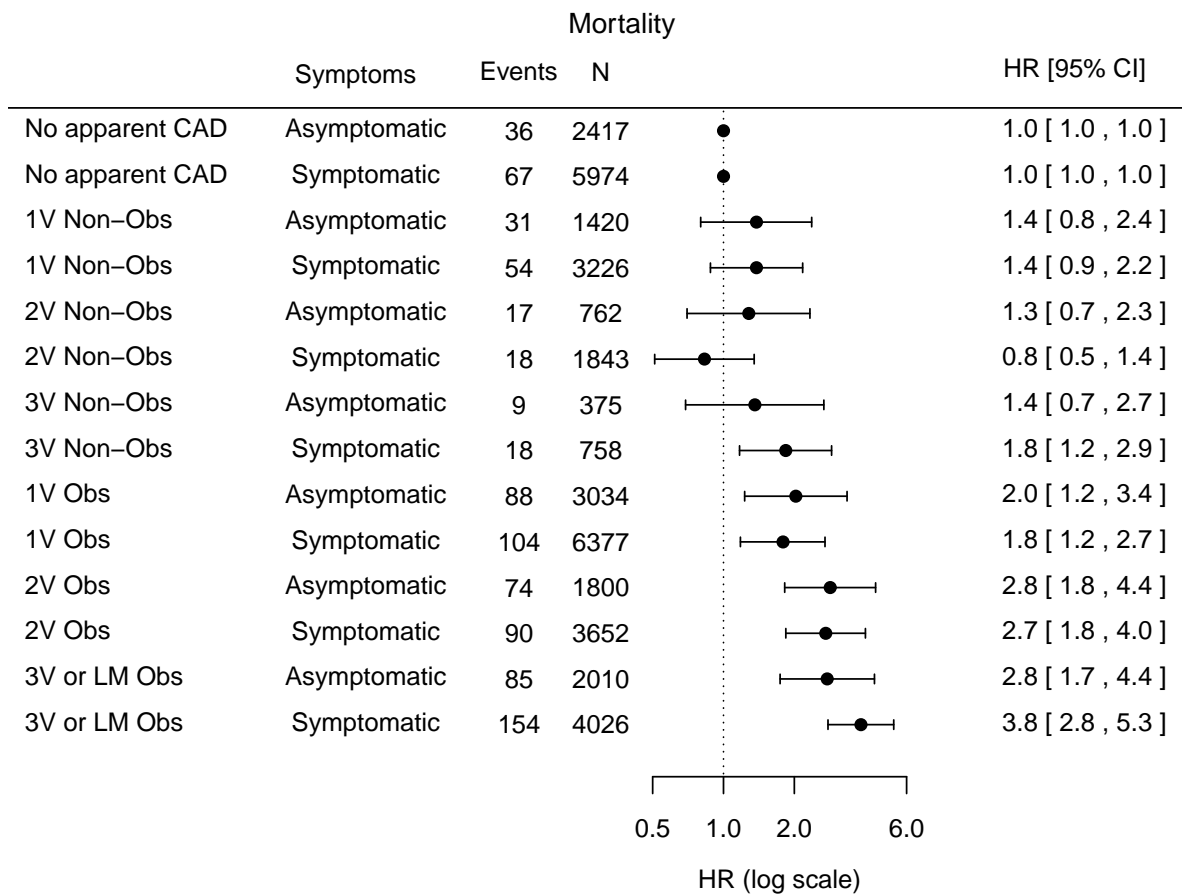


Combined MI or Mortality



eFigure 3. Adjusted Cox Model Results for 1-Year MI, Mortality, and Combined MI or Mortality by CAD Extent, Stratified by Anginal Symptoms, Relative to No Apparent CAD





Combine MI or Mortality

