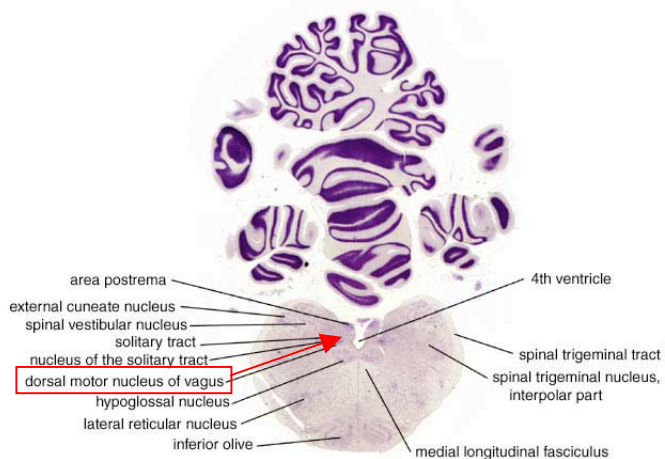


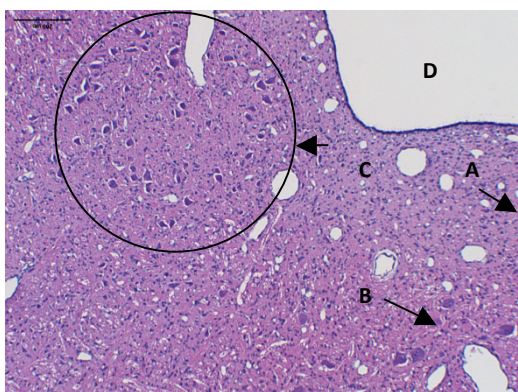
## Motor Nucleus of Vagus-Location

Michigan State Sheep Brain Atlas <sup>1</sup>

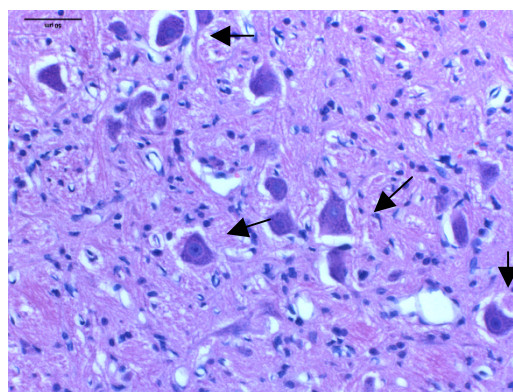
SHEEP *Ovis aries*



SPECIMEN 61-693 SECTION 1920  
WELKER WISCONSIN COLLECTION



Low magnification H&E stain of brain stem from UCO #901 showing location of motor nucleus of vagus. A) midline of brain stem B) hypoglossal nucleus C) dorsal motor nucleus of vagus, D) 4<sup>th</sup> Ventricle (Scale Bar =200uM)



High magnification (20x) H&E stain of brain stem from UCO #901 showing detail of motor nucleus of vagus. Arrows indicate motor neurons cut through nuclei expected to show positive cFos signal following vagal stimulation. (Scale Bar =50uM)

1. <https://www.msu.edu/user/brains/brains/sheep/scans/1920/image2.html>