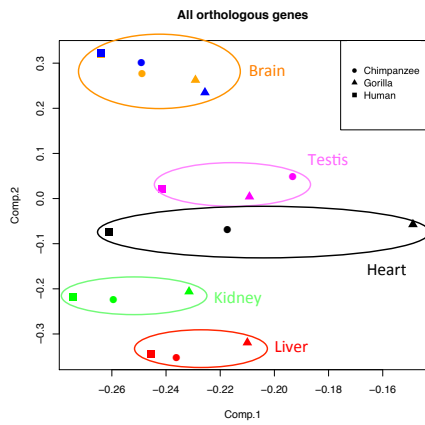
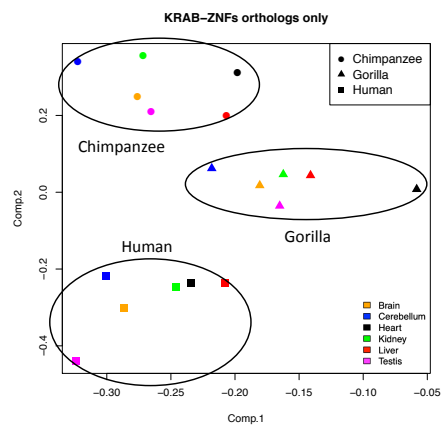


Supplementary Figure 1: Gene expression patterns for human, chimpanzee, and gorilla orthologous genes

a)



b)



Legend: Principal Component Analysis (PCA) on standardized expression values for (a) all orthologous genes and (b) KRAB-ZF only. (a) Expression data from all orthologous genes separates according to tissue. PC1 explains 68% of the variance while PC2 explains 10%. PC2 shows a clear tissue-specific segregation, while PC1 shows partial separation. (b) Data from only the KRAB-ZF orthologous genes (N = 238) separates according to species. PC1 explains 68% of the variance while PC2 explains 9%.