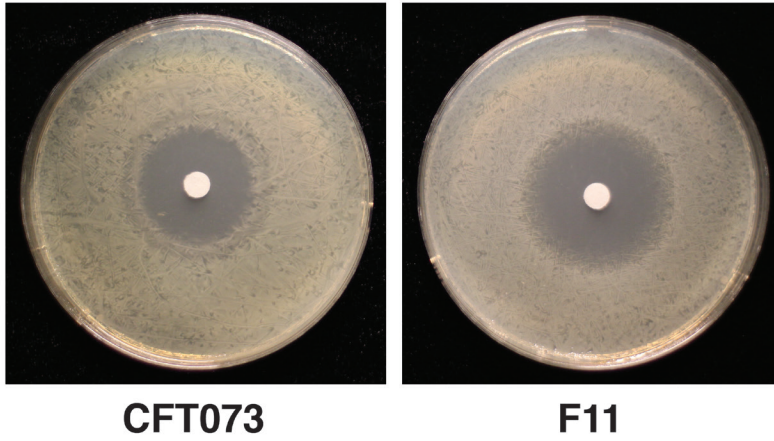
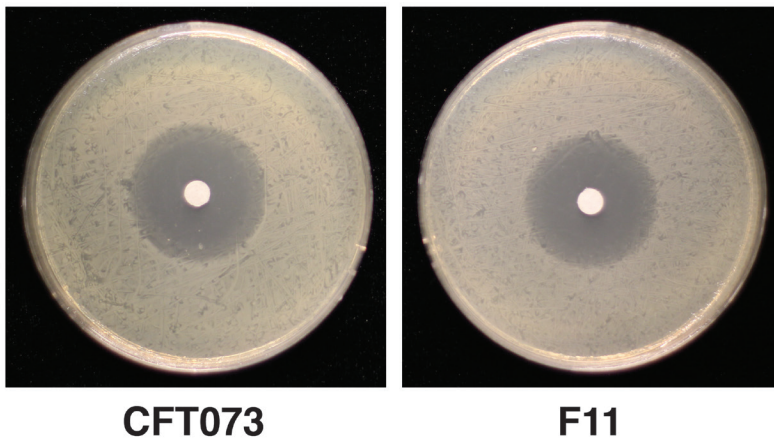


A



B



Supplemental Figure S2. CFT073 and F11 are similarly sensitive to ciprofloxacin *in vitro*.

(A and B) Representative images of ciprofloxacin disc diffusion assays on LB plates incubated overnight at 28.5°C (**A**) or 37°C (**B**). Each disc contains 5 μ g ciprofloxacin.