

SUPPLEMENTAL MATERIAL

Supplemental Table 1: Number of events (%) and hazard ratios comparing pravastatin versus placebo for all cause and cause-specific incident cancers. Analysis by time to first event.

	Placebo (n=3293)	Pravastatin (n = 3302)
All incident cancer[†]		
Events/N (%)	809 (24.6)	802 (24.3)
Hazard Ratio (95% CI) [‡]	1.0	0.96 (0.87, 1.06)
P-value [‡]		0.41
Site-specific incident cancers[†]		
Colorectal		
Events/N (%)	139 (4.2)	127 (3.8)
Hazard Ratio (95% CI) [‡]	1.0	0.87 (0.69, 1.11)
P-value [‡]		0.27
Lung		
Events/N (%)	197 (6.0)	178 (5.4)
Hazard Ratio (95% CI) [‡]	1.0	0.87 (0.71, 1.06)
P-value [‡]		0.17
Prostate		
Events/N (%)	167 (5.1)	185 (5.6)
Hazard Ratio (95% CI) [‡]	1.0	1.06 (0.86, 1.31)
P-value [‡]		0.57
Upper GI		
Events/N (%)	77 (2.3)	85 (2.6)
Hazard Ratio (95% CI) [‡]	1.0	1.06 (0.78, 1.45)
P-value [‡]		0.70
Urinary tract		
Events/N (%)	96 (2.9)	98 (3.0)
Hazard Ratio (95% CI) [‡]	1.0	0.99 (0.74, 1.31)
P-value [‡]		0.93
Other cancer		
Events/N (%)	190 (5.8)	201 (6.1)
Hazard Ratio (95% CI) [‡]	1.0	1.02 (0.84, 1.25)
P-value [‡]		0.84

*Excludes participants who died or had event of interest within trial. [‡]Adjusted for age, body mass index, smoking status (current, ex-smoker, never) and deprivation (DEPCAT).

Supplemental Table 2: Primary reason for non-cardiovascular hospital admissions by ICD 10 chapter for day cases. Number of subjects with events and cumulative recurrent events.

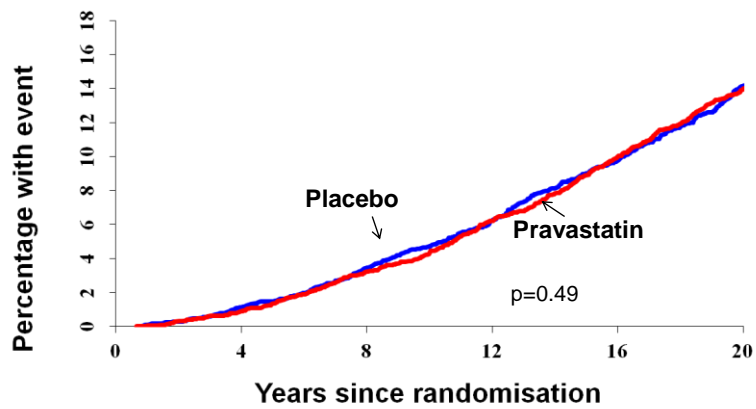
ICD 10 chapter	Placebo (n = 3293)		Pravastatin (n = 3302)	
	Subjects with events	Events	Subjects with events	Events
A00-B99 Certain infectious and parasitic diseases	27	28	21	28
C00-D49 Neoplasms	667	2264	687	2504
D40-D89 Diseases of the blood and blood-forming organs and certain disorders involving the immune mechanism	95	216	104	251
E00-E90 Endocrine, nutritional and metabolic diseases	25	112	28	150
F00-F99 Mental and behavioural disorders	13	13	9	9
G00-G99 Diseases of the nervous system	46	58	49	86
H00-H59 Diseases of the eye and adnexa	362	581	430	692
H60-H95 Diseases of the ear and mastoid process	20	23	27	36
I00-I99 Diseases of the circulatory system	0	0	0	0
J00-J99 Diseases of the respiratory system	74	80	88	96
K00-K93 Disease of the digestive system	990	1663	995	1791
L00-L99 Diseases of the skin and subcutaneous tissue	228	364	220	331
M00-M99 Diseases of the musculoskeletal system and connective tissue	224	501	192	381
N00-N99 Diseases of the genitourinary system	434	614	456	665
Q00-Q99 Congenital malformations, deformations and chromosomal abnormalities	5	5	2	2
R00-R99 Symptoms, signs and abnormal clinical and laboratory findings, not elsewhere classified	710	954	693	907
S00-T98 Injury, poisoning and certain other consequences of external causes	100	118	116	161
V01-Y98 External causes of morbidity and mortality	96	136	92	138
Z00-Z99 Factors influencing health status and contact with health services	448	820	445	997
Uncoded	6	6	1	1

Supplemental Table 3: Primary reason for non cardiovascular hospital admissions by ICD 10 chapter for non-day cases. Number of subjects with events and cumulative recurrent events.

ICD 10 chapter	Placebo (n = 3293)		Pravastatin (n = 3302)	
	Subjects with events	Events	Subjects with events	Events
A00-B99 Certain infectious and parasitic diseases	87	94	59	73
C00-D49 Neoplasms	728	1904	734	1985
D40-D89 Diseases of the blood and blood-forming organs and certain disorders involving the immune mechanism	82	102	79	109
E00-E90 Endocrine, nutritional and metabolic diseases	72	90	62	81
F00-F99 Mental and behavioural disorders	64	74	50	68
G00-G99 Diseases of the nervous system	123	177	113	157
H00-H59 Diseases of the eye and adnexa	135	181	125	175
H60-H95 Diseases of the ear and mastoid process	39	46	47	55
I00-I99 Diseases of the circulatory system	2	2	0	0
J00-J99 Diseases of the respiratory system	482	906	482	813
K00-K93 Disease of the digestive system	786	1281	854	1411
L00-L99 Diseases of the skin and subcutaneous tissue	119	148	127	168
M00-M99 Diseases of the musculoskeletal system and connective tissue	491	771	552	828
N00-N99 Diseases of the genitourinary system	569	891	537	863
Q00-Q99 Congenital malformations, deformations and chromosomal abnormalities	17	19	11	12
R00-R99 Symptoms, signs and abnormal clinical and laboratory findings, not elsewhere classified	1041	1962	1004	1826
S00-T98 Injury, poisoning and certain other consequences of external causes	478	614	470	659
V01-Y98 External causes of morbidity and mortality	30	33	37	47
Z00-Z99 Factors influencing health status and contact with health services	188	241	179	247
Uncoded	9	11	5	5

Supplemental Figure 1: Cumulative incidence functions for cancer mortality and incident cancer

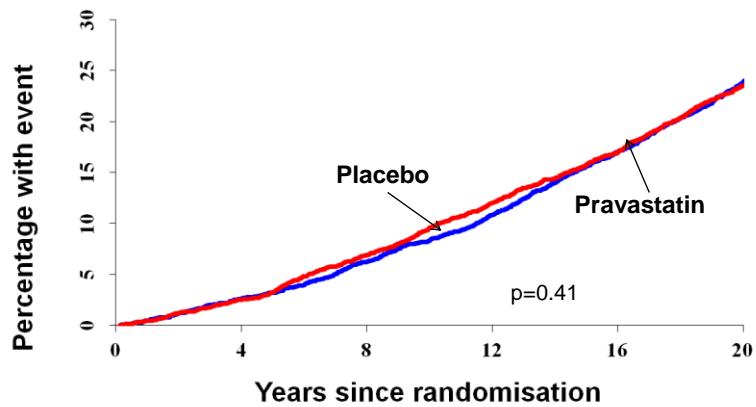
1a) Cancer Mortality



Numbers at risk:

Placebo	3293	3185	3021	2785	2501	2203
Pravastatin	3302	3223	3069	2838	2598	2295

1b) Cancer Incidence

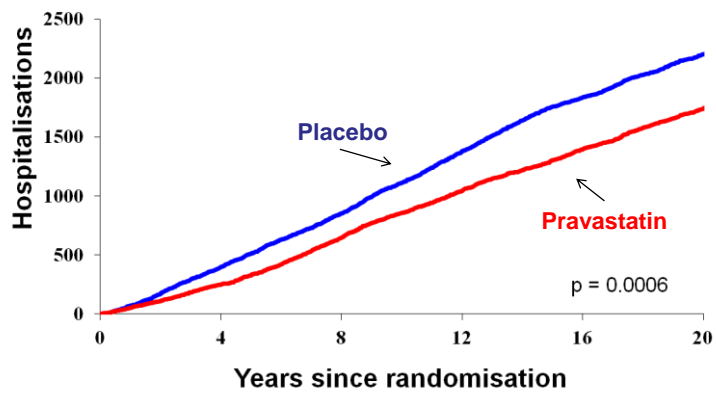


Numbers at risk:

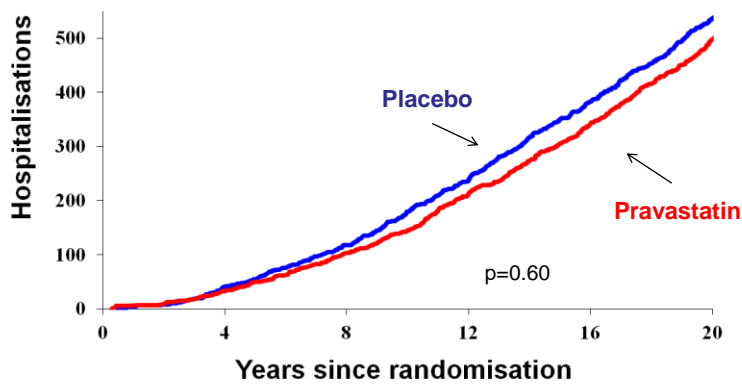
Placebo	3293	3138	2923	2647	2317	1448
Pravastatin	3302	3172	2952	2658	2377	1548

Supplemental Figure 2: Cumulative hospital admissions including recurrent events involving coronary heart disease, stroke and non cardiovascular causes

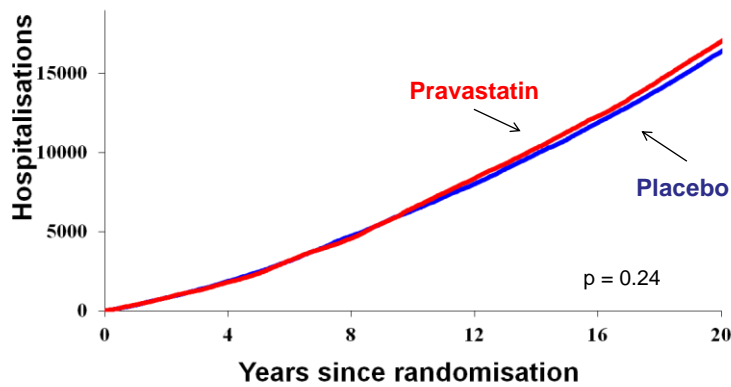
2a) Cumulative hospitalisations (coronary heart disease)



2b) Cumulative hospitalisations (stroke)



2c) Cumulative hospitalisations (non cardiovascular)



Supplemental Figure legends

Figure 1 Cumulative incidence functions for all-cancer mortality and morbidity. P values determined by Cox proportional hazards model.

Figure 2. Cumulative numbers of hospital admissions for the outcomes of (a) coronary heart disease, (b) stroke, and (c) all non-cardiovascular causes. P values were computed by re-randomisation tests.