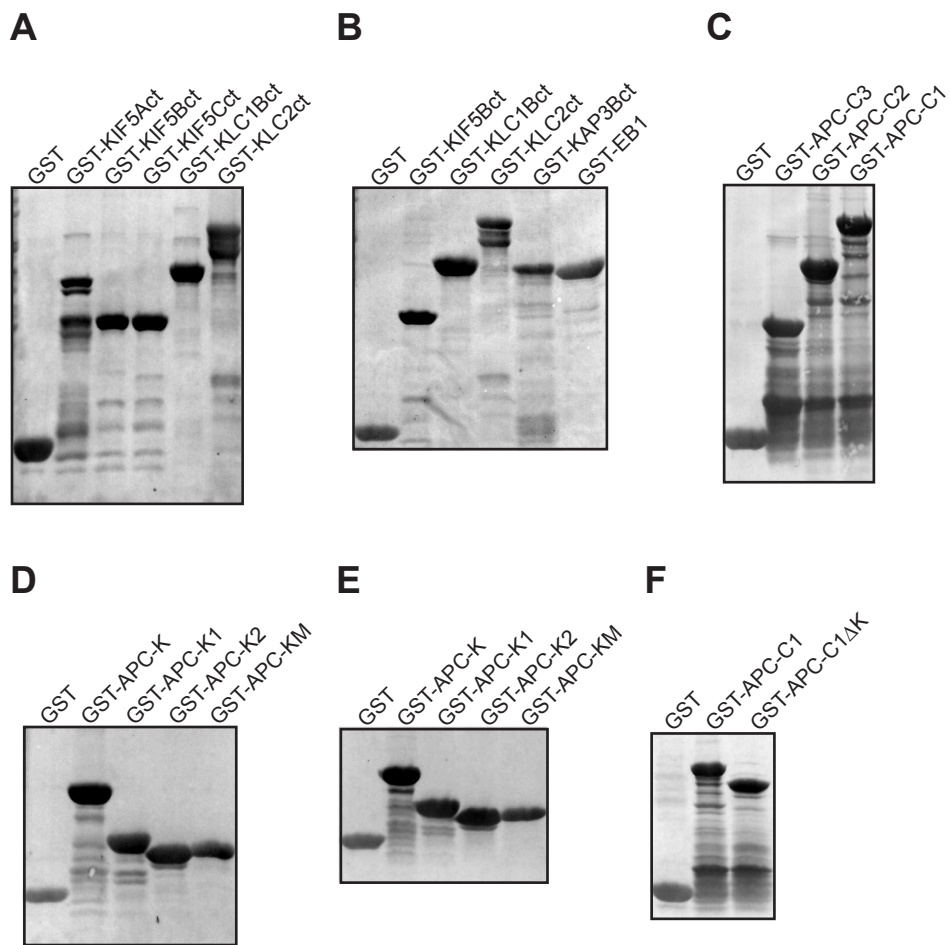


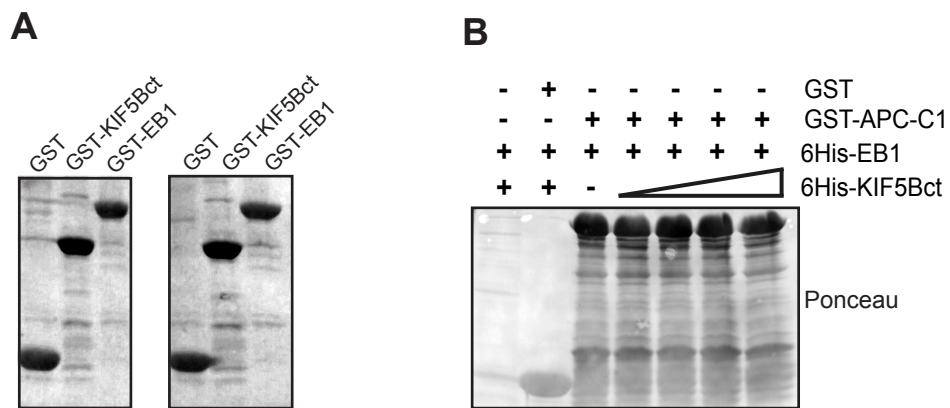
**Tumour Suppressor Adenomatous Polyposis Coli (APC) localisation  
is regulated by both Kinesin-1 and Kinesin-2**

Peter Ruane, Laura F. Gummy, Becky Bola, Beverley Anderson, Marcin J. Wozniak, Casper C. Hoogenraad and Victoria J. Allan

**Supplementary material**

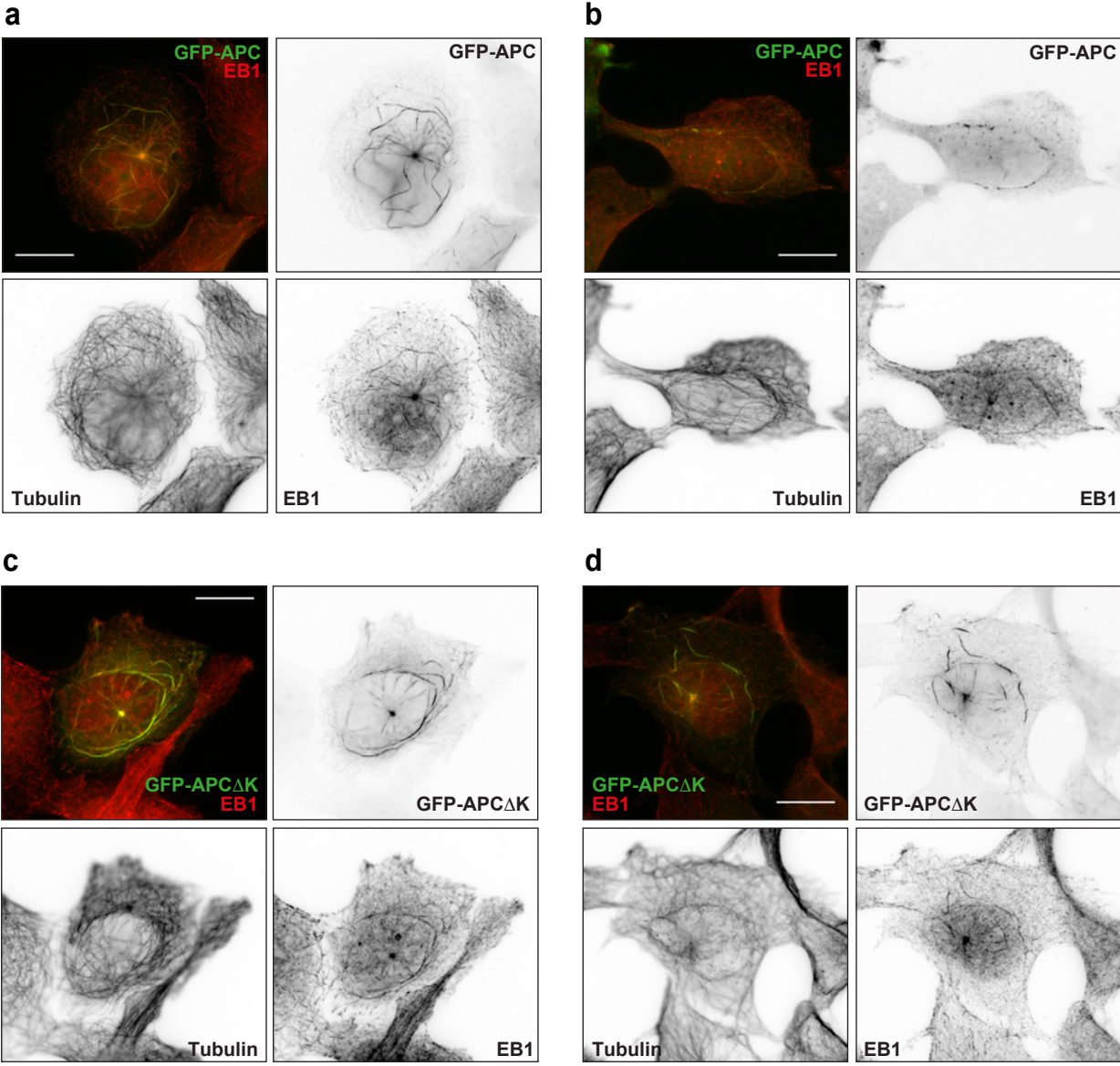


**Supplemental Figure 1.** Images of Ponceau-S-stained membranes used for the immunoblotting analysis shown in Figure 1. The panel order is the same in both Figures.



**Supplemental Figure 2.** Ponceau-S staining of membranes used for the immunoblotting analysis shown in Figure 2. **(A)** Ponceau-S staining for Figure 2A. **(B)** Ponceau-S staining for Figure 2D.

Figure S3



**Supplemental Figure 3.** Wide-field images of MRC-5 cells where GFP-APC and GFP-APCΔK were not peripherally localised. Cells transfected with full length GFP-tagged APC with (A, B: GFP-APC) or without (C, D: GFP-APCΔK) the KIF5 binding region were labelled with anti-EB1 (red) and anti- $\alpha$ -tubulin. Merges of the GFP and EB1 channels are shown, and single channels are presented in reverse contrast. Scale bars, 10 $\mu$ m.