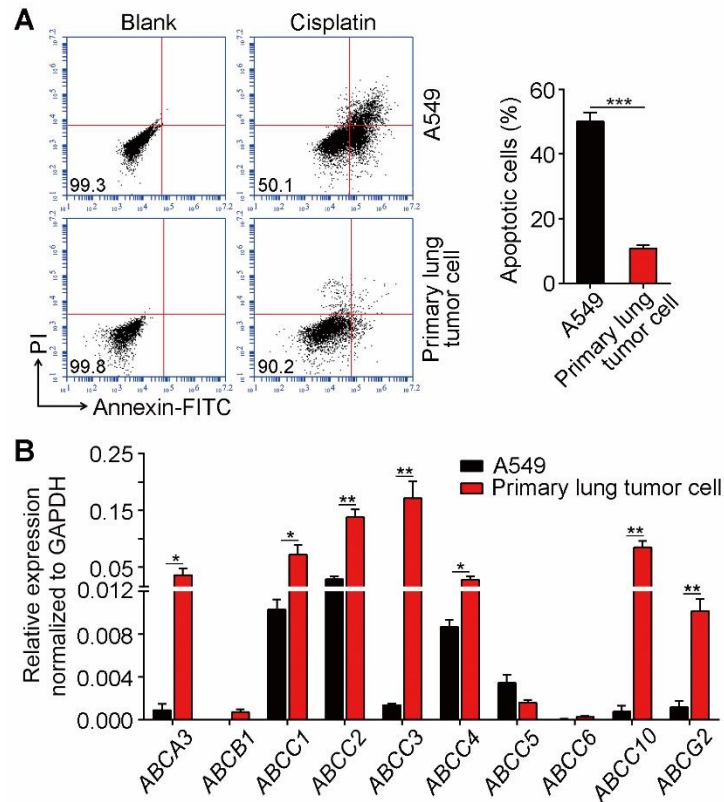


Supplementary information

Supplementary Figure 1



Supplementary information, Figure S1. The primary lung tumor cells were drug resistant compared with A549 cell line (Related to Figure 1). (A) The primary lung tumor cells in the malignant fluid from patients were cisplatin resistant compared with A549 cell line. The primary lung tumor cells (5×10^4) and A549 cells (5×10^4) were treated with $2 \mu\text{g/ml}$ cisplatin for 36 hours, respectively. The cells were collected and stained with FITC-conjugated Annexin-V and PI for apoptotic detection by flow cytometry. (B) The primary lung tumor cells showed high expression of multidrug resistance genes compared with A549 cell line by real-time PCR analysis. For all graphs, error bars indicate mean \pm s.e.m.; $n=3$ independent experiments. * $P < 0.05$, ** $P < 0.01$, *** $P < 0.001$ (Student's *t*-test).