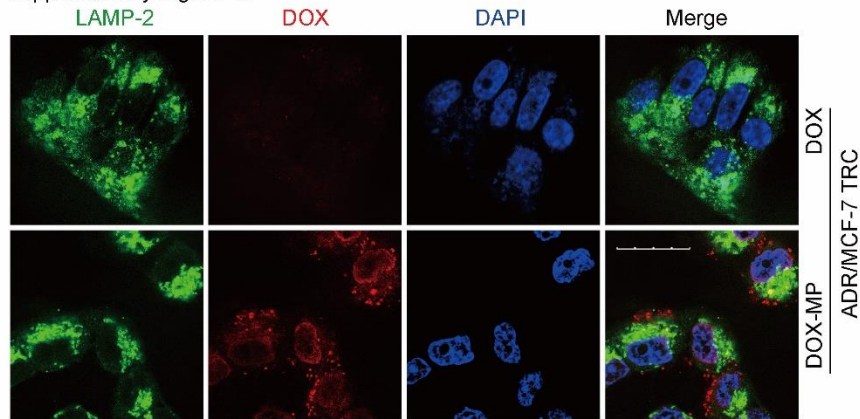


Supplementary Figure 10



Supplementary information, Figure S10. Drug-packaging MPs facilitate the entry of DOX into the nucleus (Related to **Figure 5**). ADR/MCF-7 TRCs were treated with DOX or DOX-MPs for 12 hours and then stained with LAMP-2 antibody (green), DAPI (blue) and observed under two-photon confocal microscope. Scale bar, 20 μm .