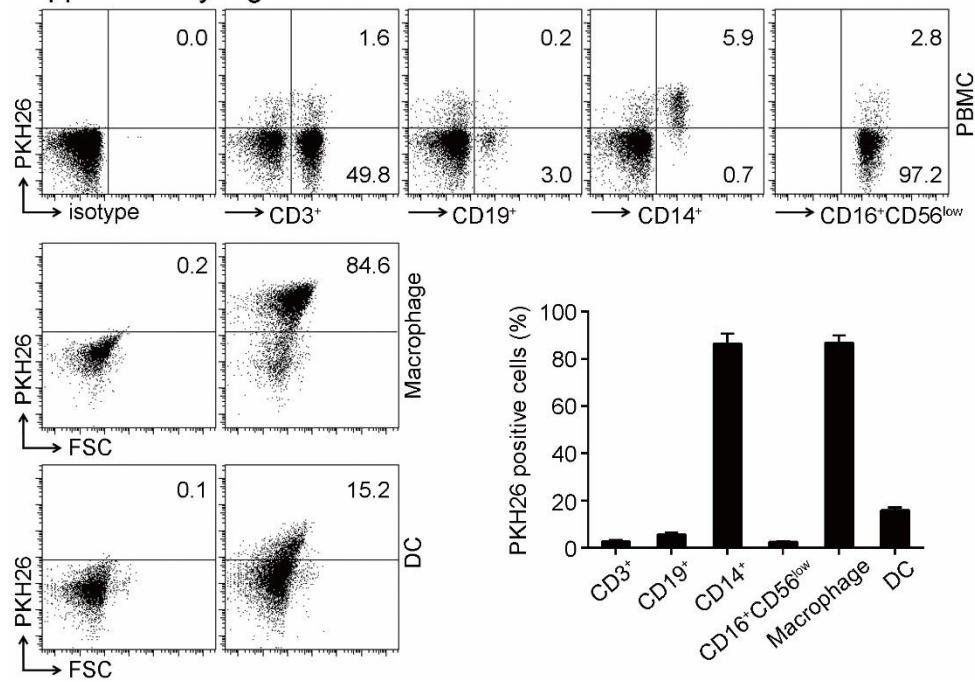


Supplementary Figure 4



**Supplementary information, Figure S4. The uptake of MPs by immune cells *in vitro*** (Related to **Figure 1**). PKH26-stained A549-MPs were incubated with PBMCs from normal donors for 2 hours and then the PBMCs were collected and stained with anti-CD3, CD19, CD14, CD16 and CD56 antibodies for flow cytometric analysis. A part of PBMCs were cultured with RPMI 1640 culture medium containing 20 ng/ml M-CSF (PeproTech) or 20 ng/ml IL-4 and GM-CSF (PeproTech) for 6 days respectively. Differentiated macrophages or DCs were harvested and incubated with PKH26-stained A549-MPs for 2 hours and then collected for flow cytometric analysis.