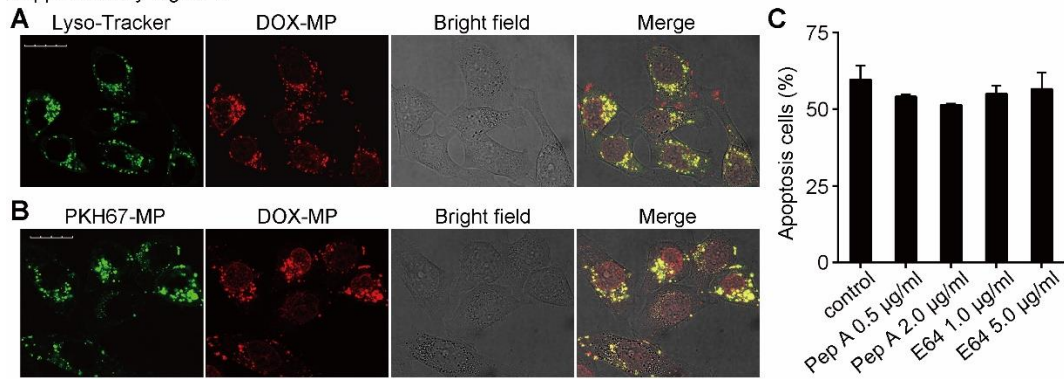


Supplementary Figure 8



Supplementary information, Figure S8. The relations among the MP membranes, drugs, and lysosomes (Related to **Figure 5**). (A) DOX-MPs deliver DOX to the nucleus and lysosomes of TRCs. DOX-MPs were incubated with MCF-7 TRCs for 12 hours. Cells were then stained with lysosome Green Trackers and observed under the two-photon confocal microscope. Scale bar, 20 µm. (B) DOX colocalizes with MP membranes in lysosomes. DOX-MPs were stained with PKH67 and then used to treat MCF-7 TRCs for 12 hours. Cells were imaged under the two-photon confocal microscope. Scale bar, 20 µm. (C) Drug-packaging MPs induced cell death is not dependent on lysosome-mediated apoptosis. H22 TRCs were pre-treated with protease inhibitor Pepstatin A and E-64 for 30 minutes, respectively. Then all groups were treated with MTX-MP for 20 hours and the cells were collected and stained with FITC-conjugated Annexin-V for apoptotic detection by flow cytometry. Mean \pm s.e.m.; n=3 independent experiments.