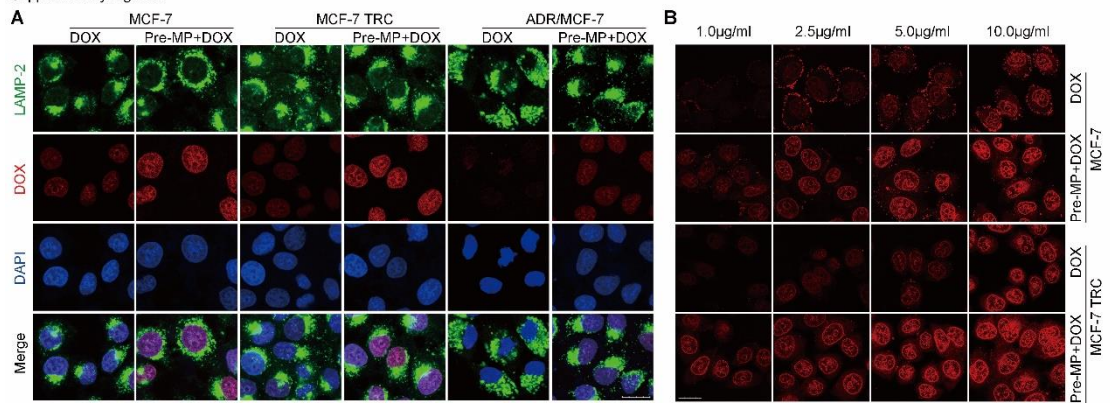


Supplementary Figure 9



Supplementary information, Figure S9. MPs facilitate the entry of DOX into the nucleus (Related to **Figure 5**). (A) MCF-7, MCF-7 TRC or ADR/MCF-7 tumor cells were pre-treated with drug-free MPs for 12 hours and then treated with 1µg/ml doxorubicin for 4 hours. The cells were stained with LAMP-2 antibody (green), DAPI (blue) and observed under two-photon confocal microscope. Scale bar, 20 µm. (B) MCF-7 control tumor cells and TRCs were pre-treated with MPs for 12 hours. Then, different concentrations of DOX were added to the culture medium. 4 hours later, the nuclear entry of DOX was recorded. Scale bar, 20 µm.