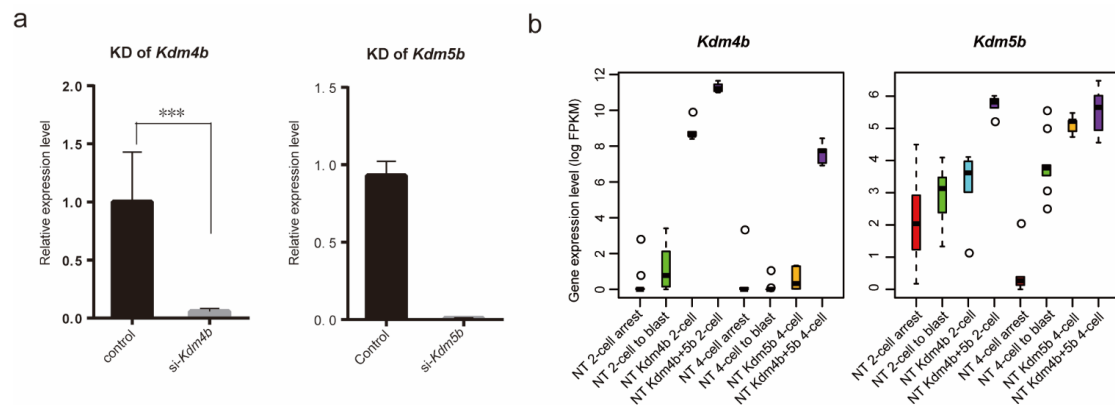


Supplementary Figure S4 Effective Knockdown and rescue of *Kdm4b* and *Kdm5b* in NT embryos



(a) *Kdm4b/5b* expression levels were reduced by *Kdm4b/5b* siRNA injection into embryos. RT-qPCR analysis of *Kdm4b/5b* was performed 48 h after injection. The relative expression levels of *Kdm4b/5b* relative to *H2A.Z* were compared with control embryos.

(b) Boxplot of *Kdm4b* and *Kdm5b* expression level in single mRNA injected or co-injection samples in 2-cell and 4-cell stage. Higher expression level indicated the successful re-introduction these mRNAs in SCNT embryos.