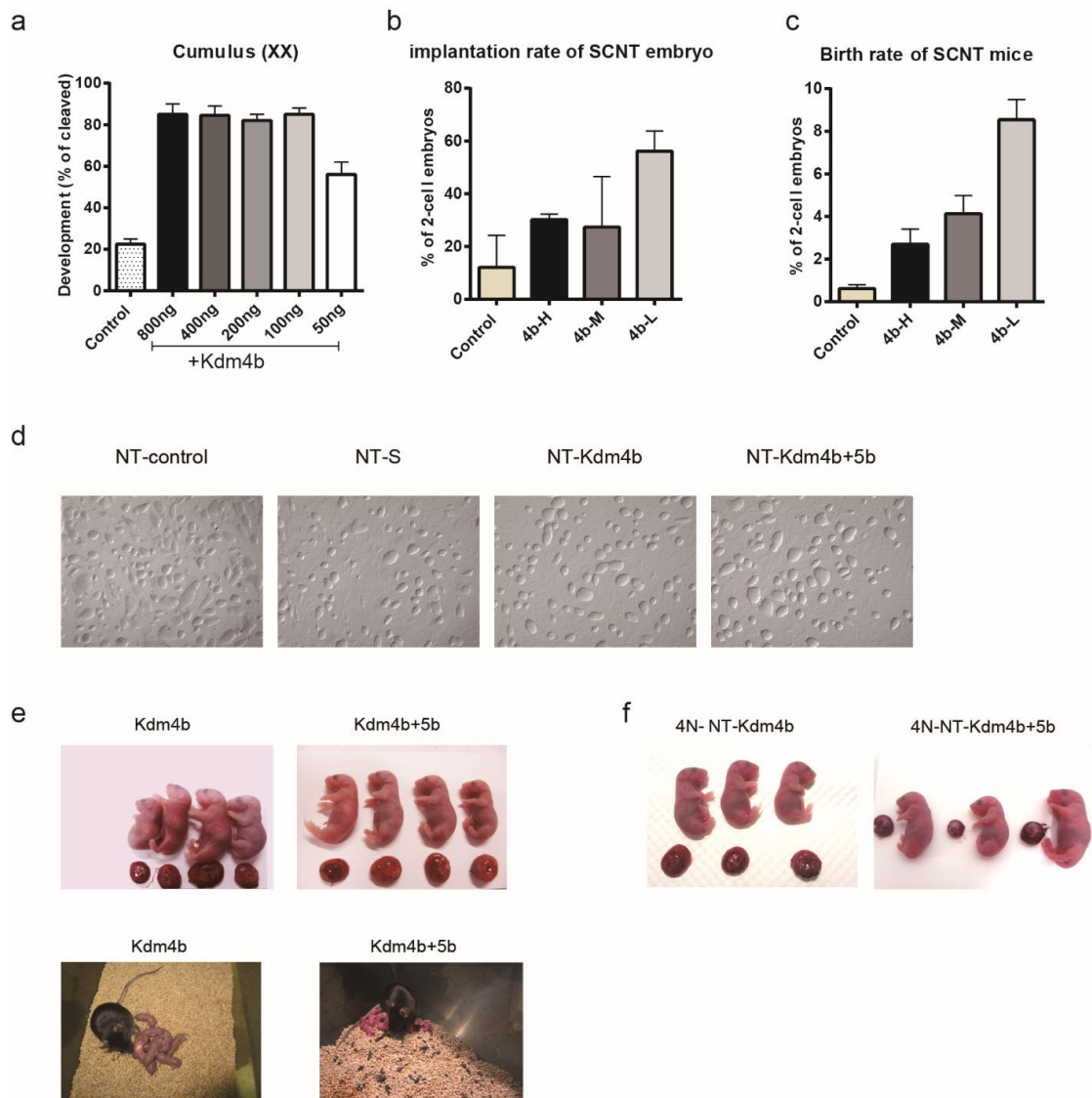


Supplementary Figure S6 ESCs and mouse derived from rescued NT embryos



(a) Preimplantation developmental rate of SCNT embryos injected with diluted *Kdm4b* mRNA.

(b-c) Injection of a lower concentration of *Kdm4b* mRNA greatly improved the implantation **(b)** and birth **(c)** rates of SCNT embryos. High, middle and low concentrations of *Kdm4b* mRNA were used (800, 200, and 100 ng/ μ l, respectively). The concentration of *Kdm4b* in following experiment is 100ng/ μ l.

(d) Representative images of ntES cell lines produced from the cloned blastocysts.

(e-f) Fetuses produced from injected SCNT **(e)** or NT-tetraploid-aggregated embryos **(f)**. The cloned mice from injected SCNT **(e)** could grow to adulthood with normal fecundity.