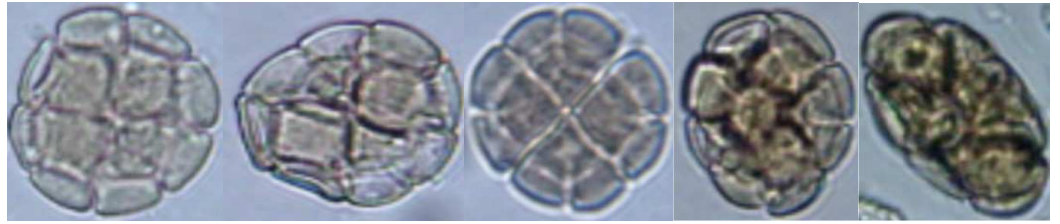


MATERIAL DE APOIO

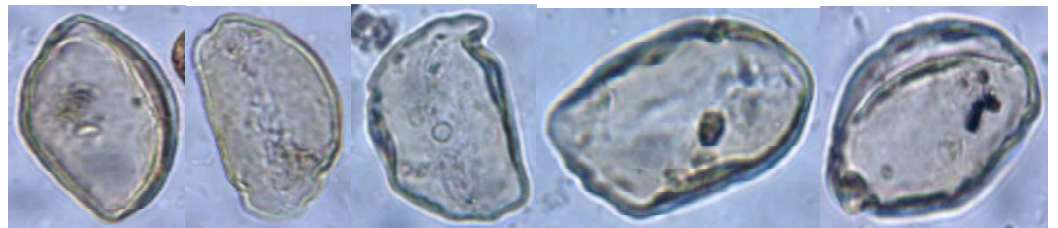
1. ARRANHA-GATO



2. ANGICO



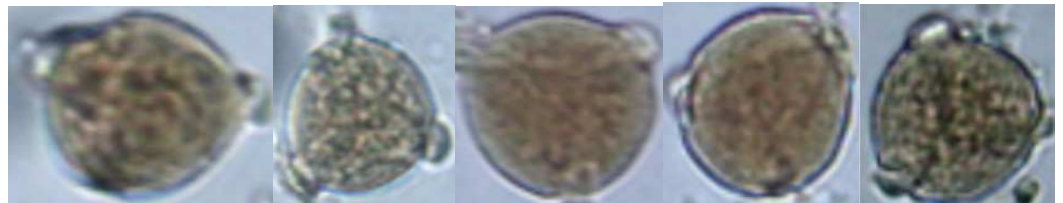
3. PALMEIRA



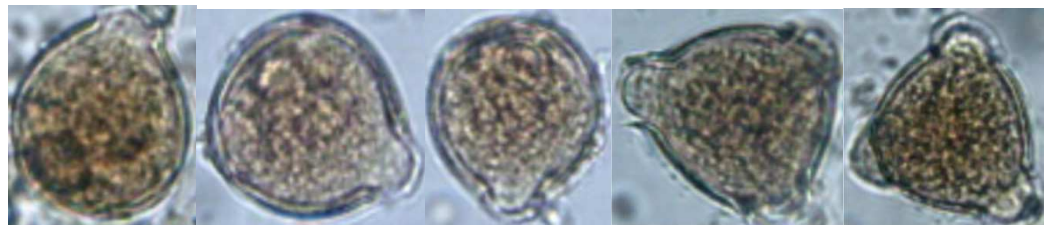
4. GUARIROBA



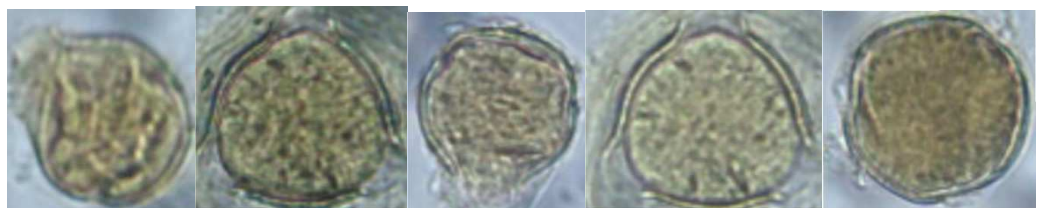
5. CIPÓ-NEVE



6. CARVÃO-VERMELHO



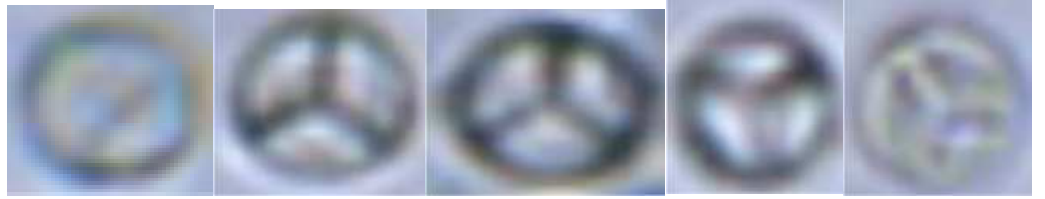
7. PAU-TERRA



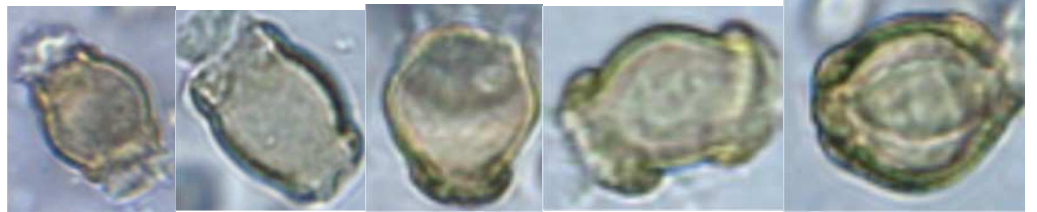
8. IMBAÚBA



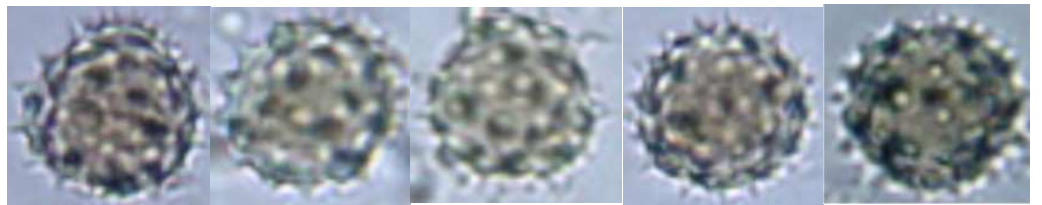
9. DORME-DORME



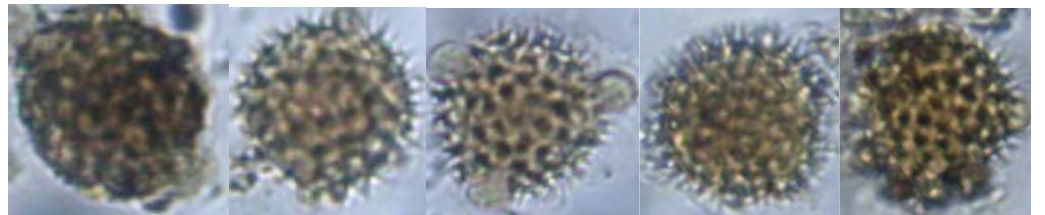
10. CAFÉ-DO-MATO



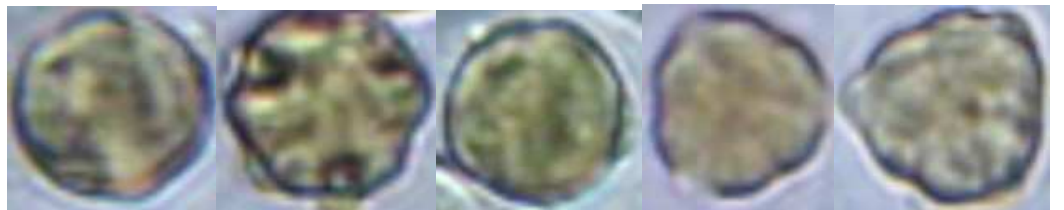
11. MATA-PASTO



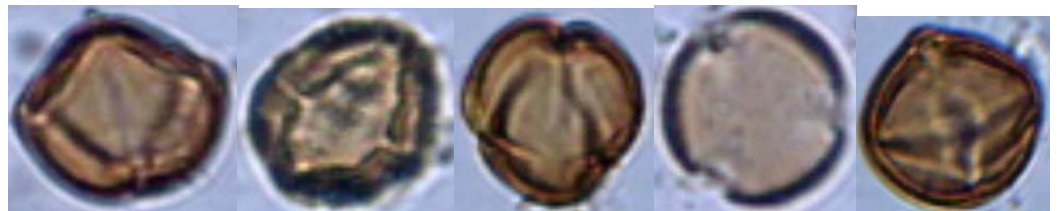
12. MARGARIDA-DO-CAMPO



13. CANELA-DE-EMA



14. AROEIRA



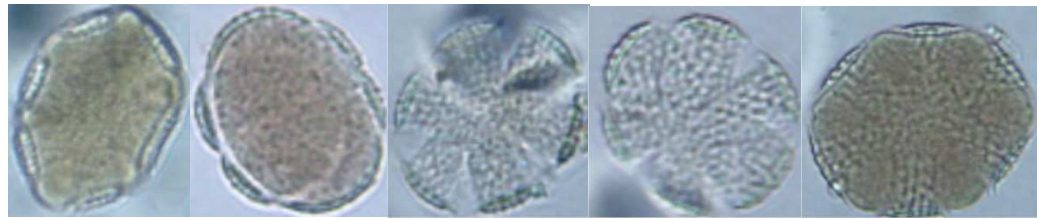
15. SANGRA D' ÁGUA



16. BRACHIARIA



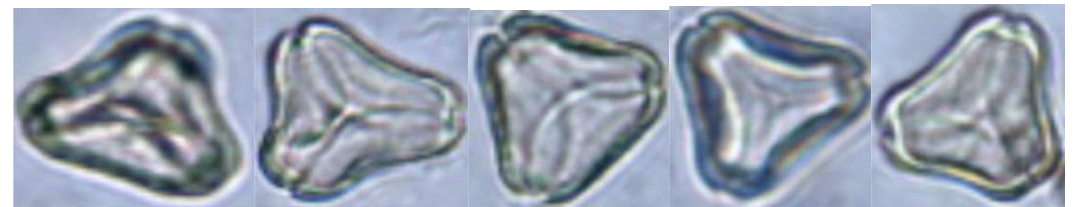
17. ALFAZEMA-BRAVA



18. MAMOEIRO-SELVAGEM



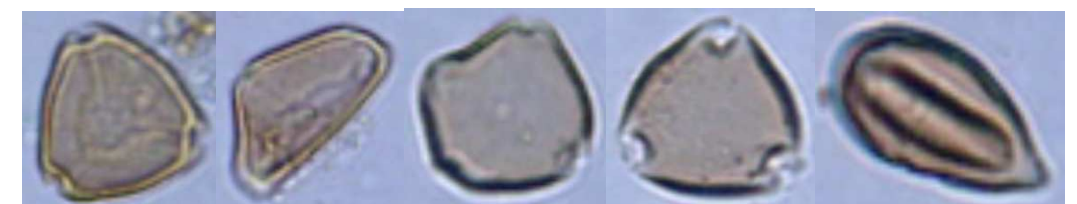
19. EUCALIPTO



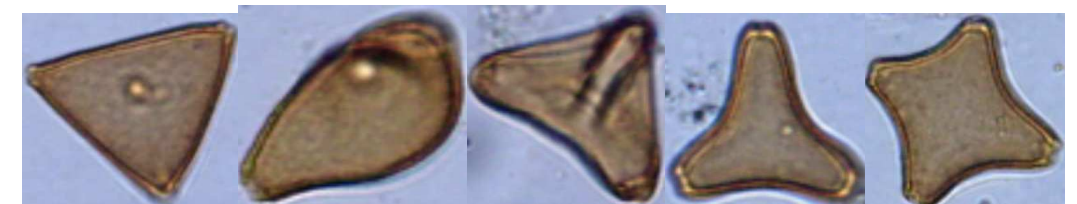
20. CAMBOATA



21. MYRCIA



22. CIPÓ-UVA



23. ALMECEGA

