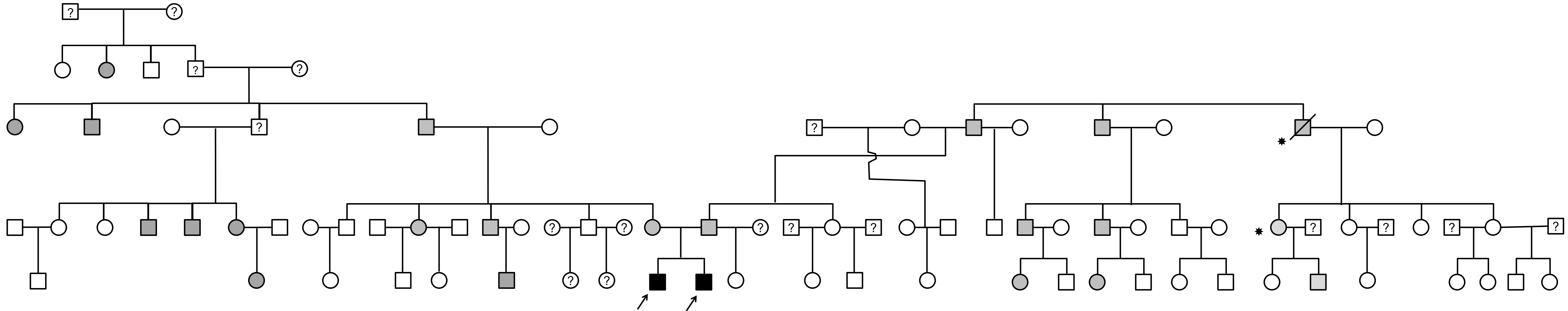


I.



Supplemental figure 1: The largest Brazilian family with *STAT5B* c.424_427del mutation. Subjects homozygous for *STAT5B* c.424_427del mutation are indicated by black symbols; heterozygous carriers by gray symbols and wild-type by white symbols. The symbol * refers to two individuals with severe pneumopathy of unknown etiology.