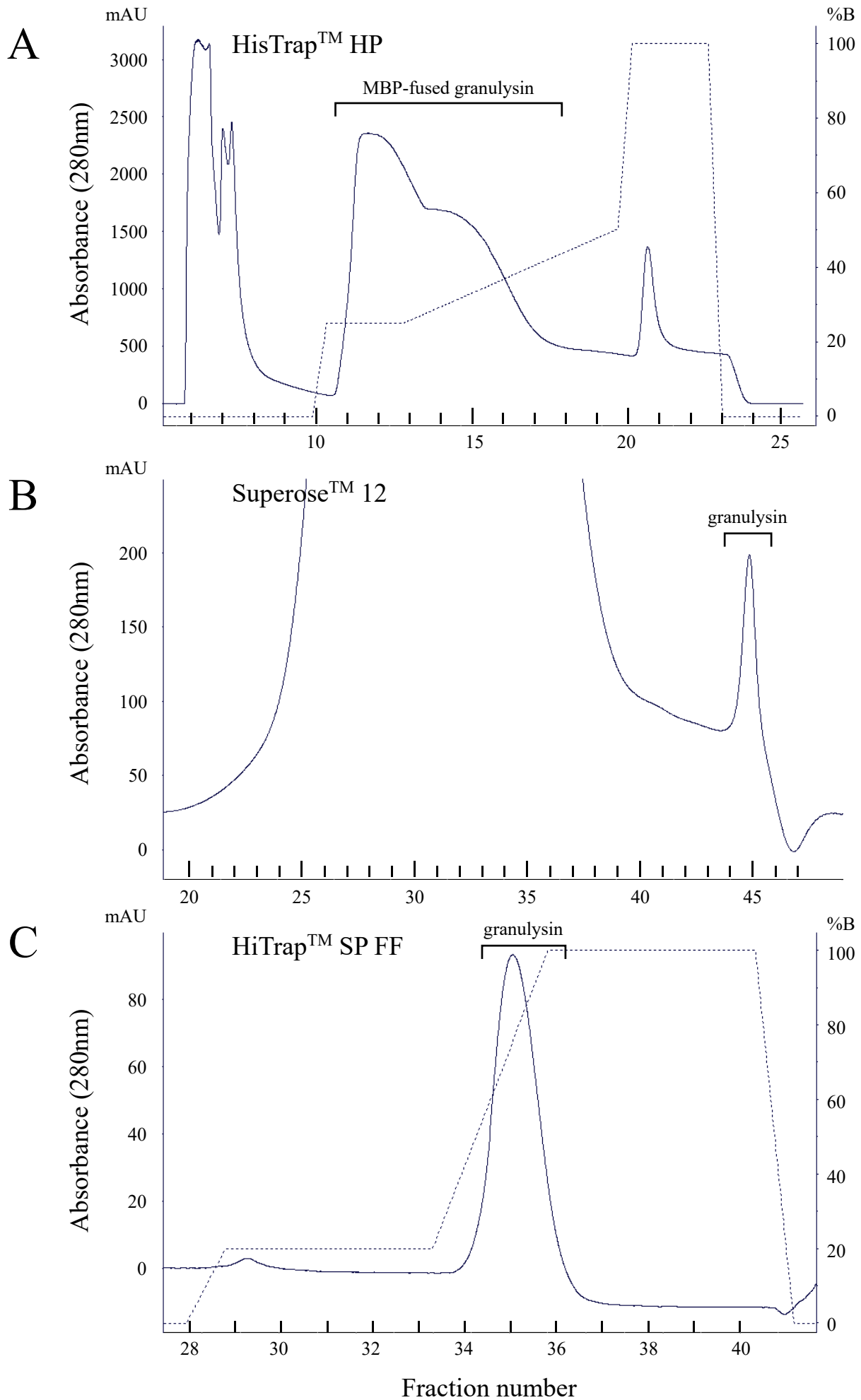
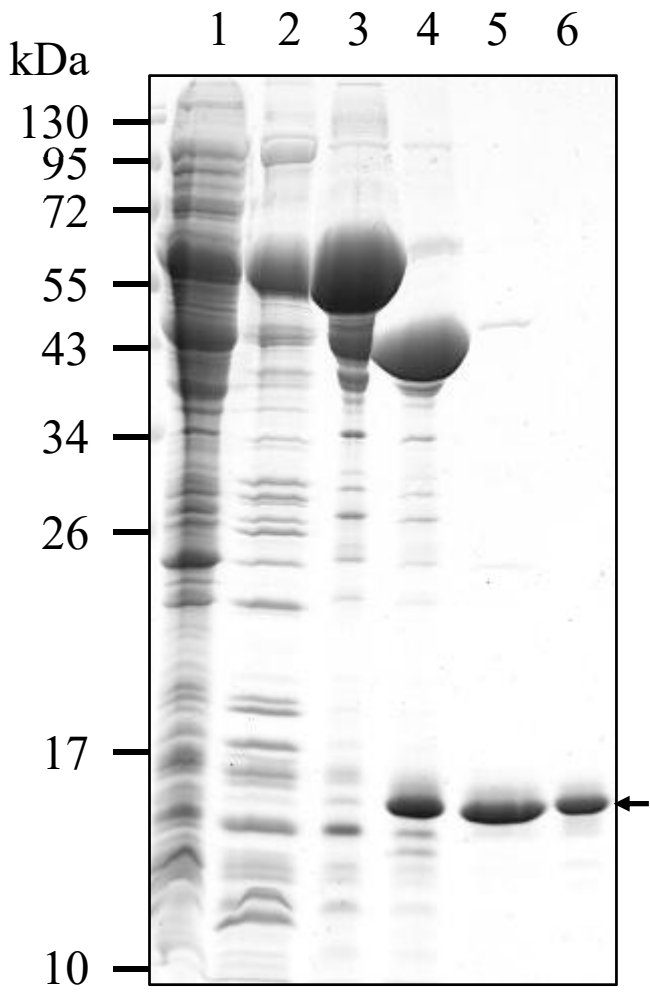


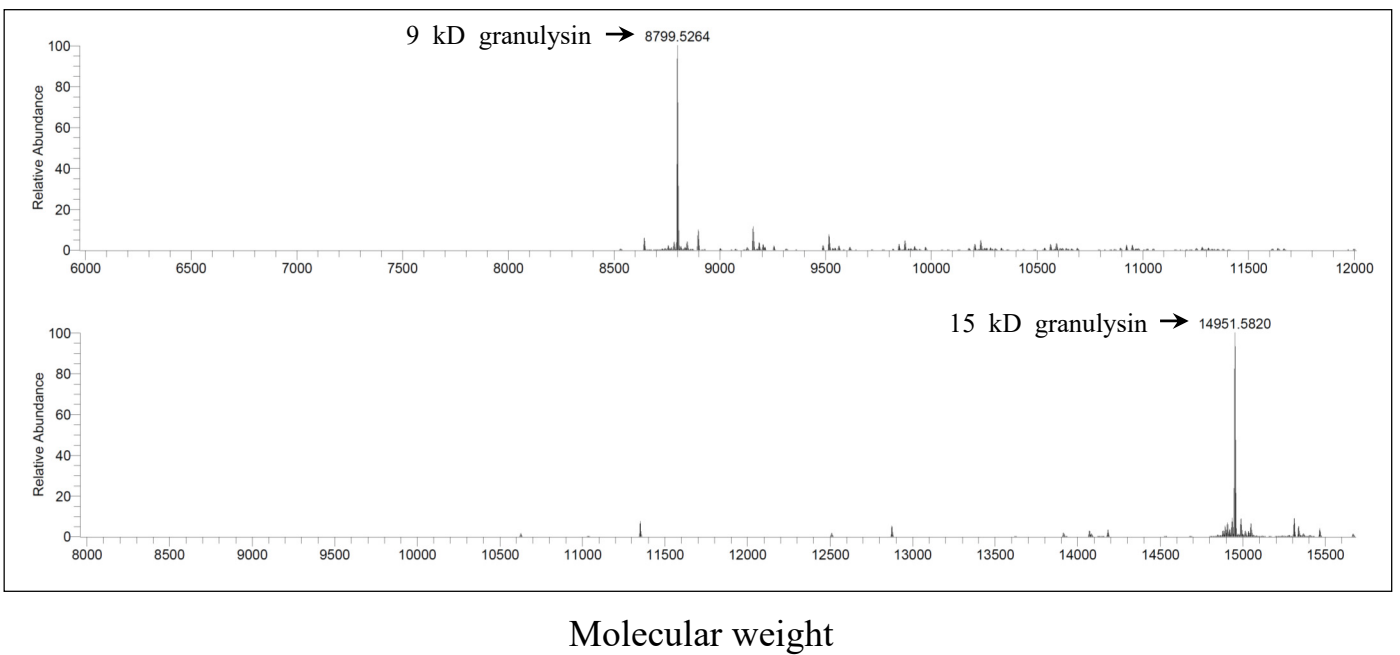
S1 Fig.



D



E



**S1 Fig. Expression and purification of granulysin.** FPLC chromatographies of 15 kDa granulysin by HisTrap<sup>TM</sup> HP (A), Superose<sup>TM</sup> 12 (B), and HiTrap<sup>TM</sup> SP FF (C) column and analysis of proteins from column eluates by 15% SDS-PAGE and Coomassie Blue staining (D). *Lane 1*, crude lysate; *Lane 2*, eluates of phosphate cellulose (P11) chromatography; *Lane 3*, eluates of HisTrap<sup>TM</sup> HP column chromatography; *Lane 4*, digestion product of PreScission<sup>TM</sup> Protease; *Lane 5*, eluates of Superose<sup>TM</sup> 12 gel filtration chromatography; *Lane 6*, eluates of HiTrap<sup>TM</sup> SP FF column chromatography. Arrow indicates the purified 15 kDa granulysin. The molecular masses of recombinant 9 and 15 kDa granulysin were determined by ESI-MS spectra (E).