

Significant pharmacokinetic differences of berberine are partly attributable to variations in gut microbiota between Africans and Chinese

Raphael N. Alolga¹, Yong Fan¹, Zhuo Chen¹, Li-Wei Liu¹, Yi-Jing Zhao¹, Jin Li¹, Yan Chen², Mao-De Lai¹, Ping Li^{1,*}, & Lian-Wen Qi^{1,*}

¹State Key Laboratory of Natural Medicines, China Pharmaceutical University, Nanjing, Jiangsu;

²Department of Emergency Center, the First Affiliated Hospital of Nanjing Medical University, Nanjing, Jiangsu

*Correspondence should be addressed to: L.-W.Q (Qilw@cpu.edu.cn) or P.L. (liping2004@126.com).

Conflict of interest/Disclosure: All the authors declare no conflict of interest.

Author contributions: R.N.A. and Y.F. contributed equally to this work; L.-W.Q, P.L., and M.-D.L. designed the research; R.N.A., Y.F., Z.C., L.-W.L., Y.-J.Z., J.L., and Y.C. performed the experiments; R.N.A. and Y.F. analyzed data; and R.N.A., Y.F., and L.-W.Q. wrote the paper.

Supplementary Figure S1

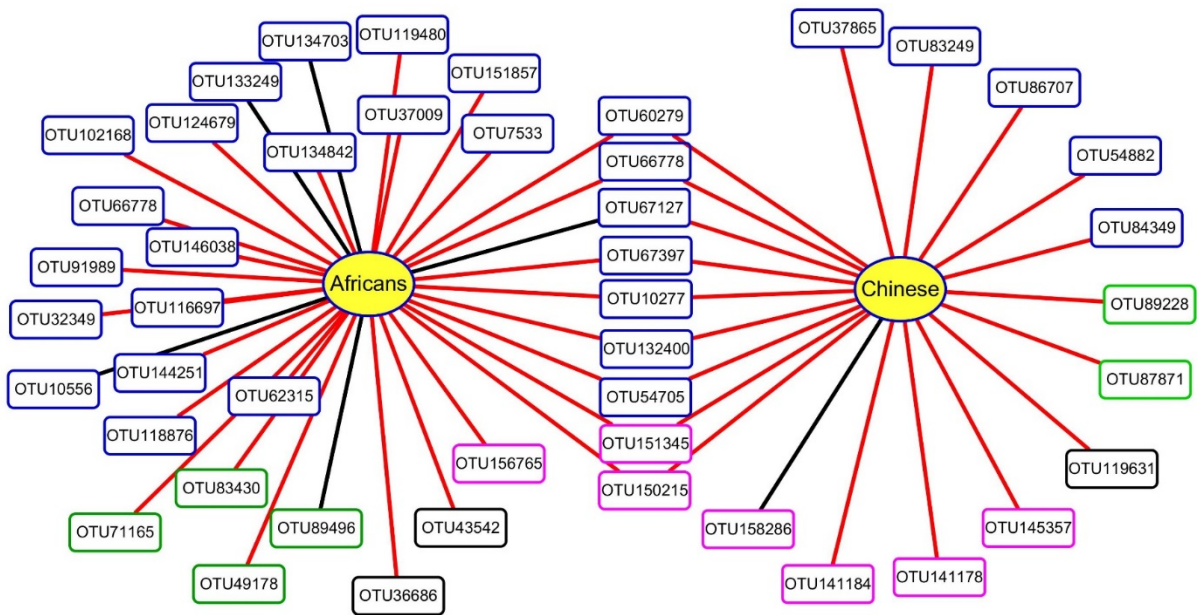


Figure 1. Correlation network of AUC of berberine and bacterial OTUs. Correlation networks of areas under the curve (*AUCs*) and intestinal operative taxonomy units (*OTUs*) in Chinese and Africans. Highly correlated *AUCs* and *OTUs* ($r < -0.7$) are connected with a line. *OTUs* in blue hollow boxes belong to *Prevotella*, *OTUs* in purple hollow boxes belong to *Bacteroides*, *OTUs* in green hollow boxes belong to *Faecalibacterium*, and *OTUs* in black hollow boxes belong to *Megamonas*. Red lines represent negative correlations, and black lines represent positive correlations.

Supplementary Table S1 Volunteer Information.¹

Participant	Age, y	Body Mass Index², Kg/m²	Country
African group (n=10)	23.5±5.4	22.4±2.3	
Volunteer 1	21	26.0	Nigeria
Volunteer 2	25	19.3	Uganda
Volunteer 3	20	24.2	Congo
Volunteer 4	25	23.8	Cameroon
Volunteer 5	20	19.7	Zambia
Volunteer 6	20	22.0	Sierra Leone
Volunteer 7	25	20.7	Sierra Leone
Volunteer 8	19	23.0	Nigeria
Volunteer 9	20	22.0	Rwanda
Volunteer 10	37	24.5	DR Congo
Chinese group (n=10)	24.4±3.5	22.3±3.7	
Volunteer 1	23	31.2	China
Volunteer 2	35	20.7	China
Volunteer 3	25	23.0	China
Volunteer 4	25	20.7	China
Volunteer 5	25	21.9	China
Volunteer 6	23	28.2	China
Volunteer 7	23	17.3	China
Volunteer 8	22	20.0	China
Volunteer 9	20	20.8	China
Volunteer 10	24	19.3	China
P value	0.639	0.975	

¹ Plus–minus values are observed means ± SD.

² The body-mass index is the weight in kilograms divided by the square of the height in meters.