

Supplementary Material

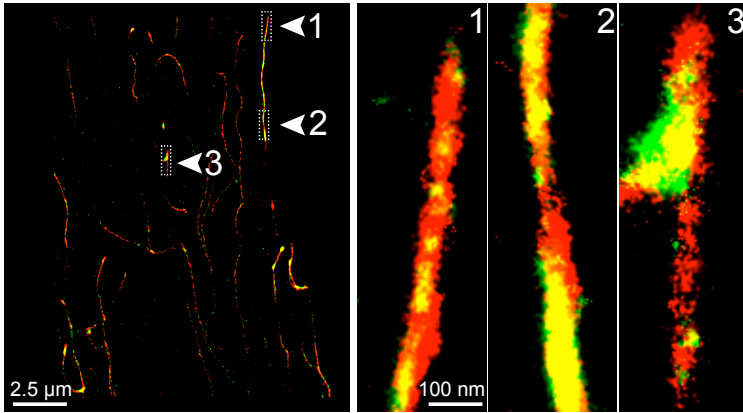


Fig. S1. EB3 and tubulin colocalize under super-resolution. A representative super-resolution image of a myocyte showing tubulin stained with Alexa647 (*red*) and EB3 stained with Alexa568 (*green*) via a dual-antibody staining, scale bar = 2.5 μm. Arrowheads highlight prominent areas of co-localized staining. Zoomed-in images of areas indicated by arrowheads shown on right, scale bar = 100 nm

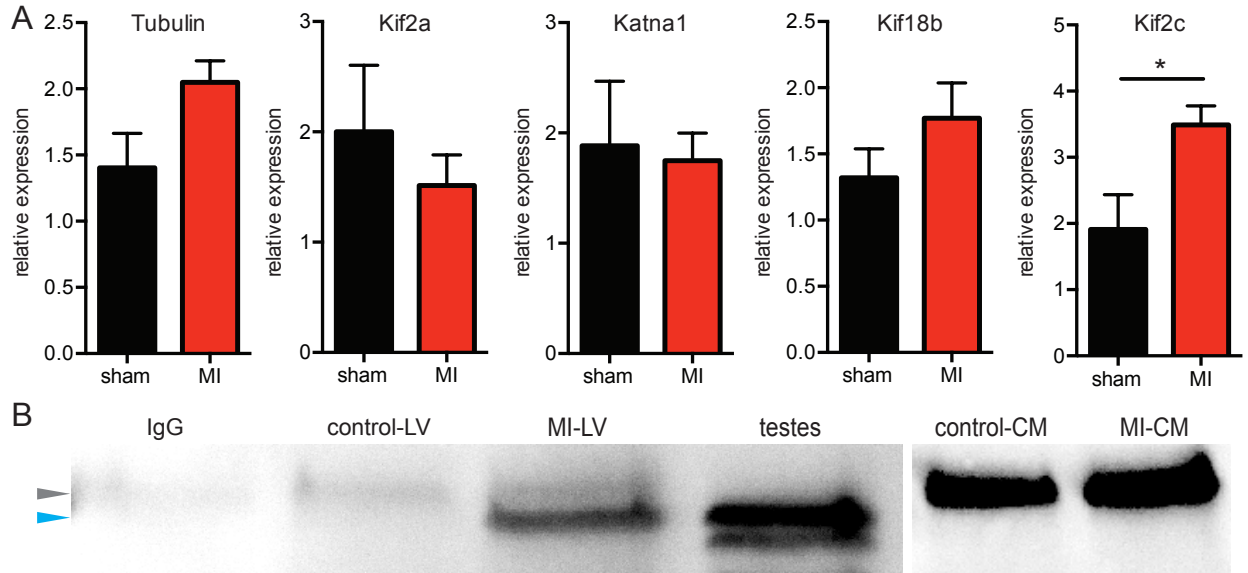


Fig. S2. No molecular mechanism for increased catastrophe. **A**, bar plots the mean \pm S.E.M. of relative real time qRT-PCR expression compared to GAPDH for tubulin, Kif2a, Katna1, Kif18b, and Kif2c in cardiomyocytes from mice undergoing a sham operation (*black*) or myocardial infarction (*red*). **B**, Co-immunoprecipitation Western blot showing self-binding Kif2c expression in IgG (negative control) (*lane 1*), the left ventricle sham operation mice (*lane 2*), the left ventricle of infarcted mice (*lane 3*), mouse testis (positive control) (*lane 4*), isolated myocytes from sham operation mice (*lane 5*), and isolated myocytes from infarcted mice (*lane 6*). Gray arrow shows location of nondescript cardio-specific band. Blue arrow show location of Kif2c band.