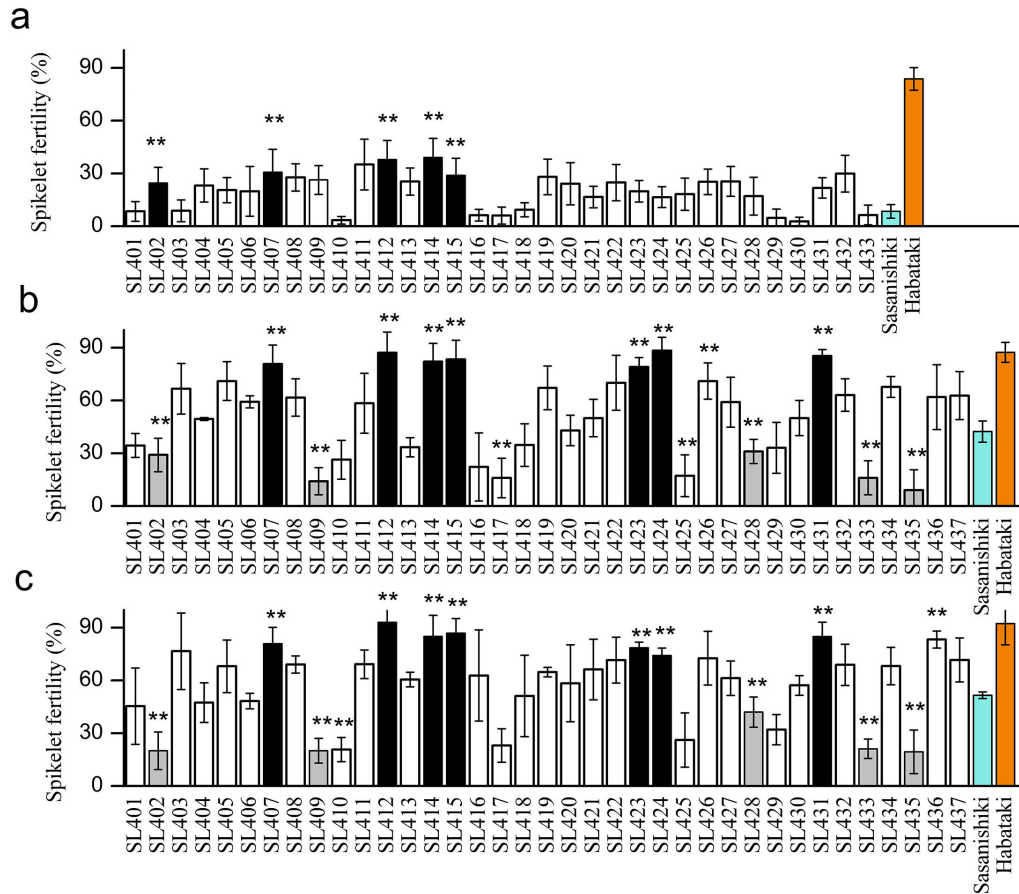


Supplemental Fig. 1. High temperature at the rice flowering stage

(a) Daily maximum and minimum air temperatures at heading stage in August 2013.

(b) Temperature variation in two experiments of 2014/8/6 and 2014/8/7. CF, cement floor; F, field.



Supplemental Fig. 2. Spikelet fertility in CSSLs under three high temperature environments

(a) Spikelet fertility of CSSLs (SL401-SL433) in 2013. (b and c) Spikelet fertility of CSSLs (SL401-SL437) exposed to heat stress in 2014/8/6 (b) and 2014/8/7 (c). Each column represents mean \pm s.d. ** means significant at $P \leq 0.001$ (Dunnnett's multiple comparison test). CSSLs which showed significantly increased or decreased of spikelet fertility in more than two environments were marked by black or gray bars, respectively. Blue bars, Sasanishiki (recurrent parent); orange bars, Habataki (donor parent).