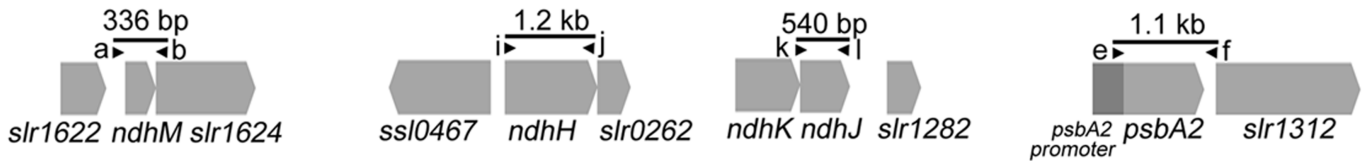
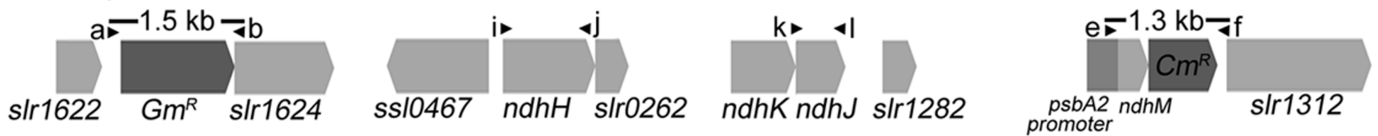


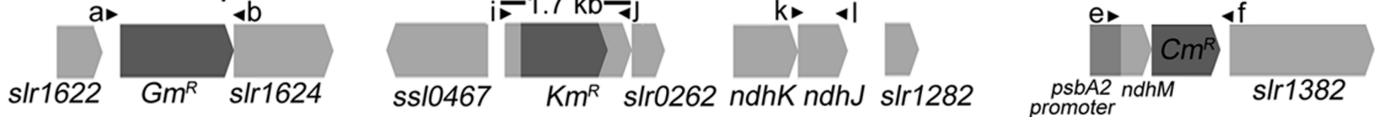
WT



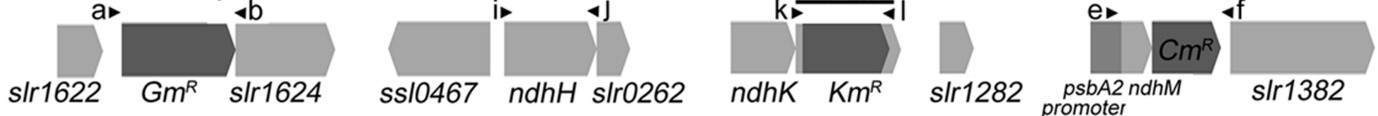
$\Delta ndhM/psbA2::ndhM$



$\Delta ndhH/\Delta ndhM/psbA2::ndhM$



$\Delta ndhJ/\Delta ndhM/psbA2::ndhM$



Supplemental Figure 1. Construction and verification of the *ndhH*-deletion and *ndhJ*-deletion mutants.

Construction of the plasmids used to generate the  $\Delta ndhH/\Delta ndhM/psbA2::ndhM$  and  $\Delta ndhJ/\Delta ndhM/psbA2::ndhM$ . Top panel: DNA fragments amplified by PCR were run on 1% agarose gels. Bottom panel: Primer location and expected DNA fragment size based on the DNA template. 1: wild type (WT); 2:  $\Delta ndhM/psbA2::ndhM$ ; 3:  $\Delta ndhH/\Delta ndhM/psbA2::ndhM$ ; 4:  $\Delta ndhJ/\Delta ndhM/psbA2::ndhM$ .