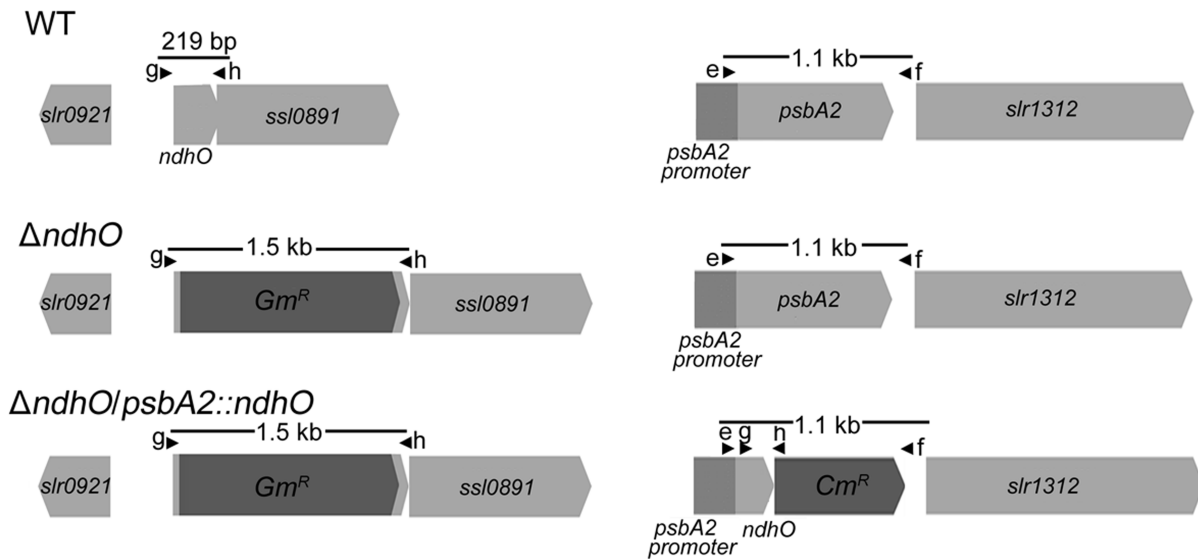
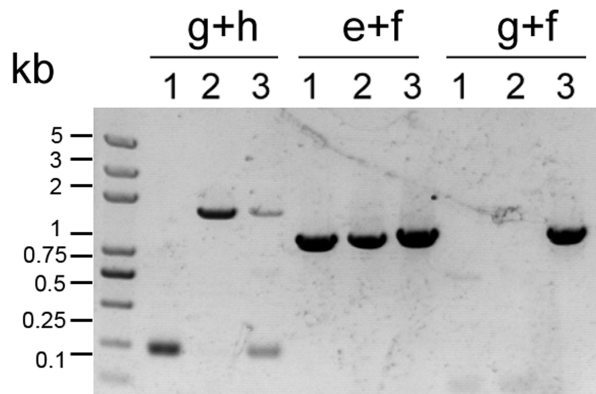


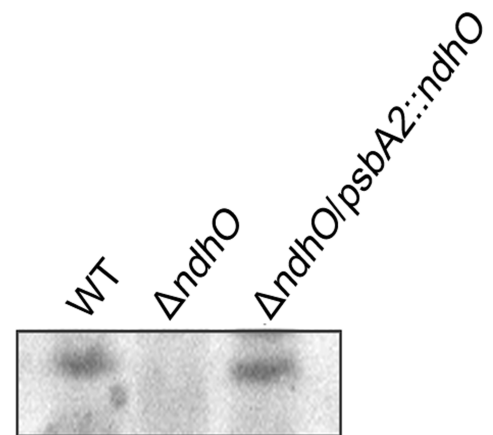
A



B



C



Supplemental Figure 2. Construction and verification of the complemented *ndhO* strain. A, Construction of the plasmid used to generate the $\Delta ndhO/psbA2::ndhO$. B, PCR segregation analysis of the $\Delta ndhO/psbA2::ndhO$ mutant using the primers listed in Supplemental Table S1. Primers location is shown in A, and the expected DNA fragment size is based on the DNA template. 1: wild type (WT); 2: $\Delta ndhO$; 3: $\Delta ndhO/psbA2::ndhO$. C, Immunoblot analysis of NdhO in thylakoid membranes using antibody against NdhO in WT, $\Delta ndhO$, and $\Delta ndhO/psbA2::ndhO$. Each lane was loaded with thylakoid membrane proteins corresponding to 2 μ g chlorophyll a.