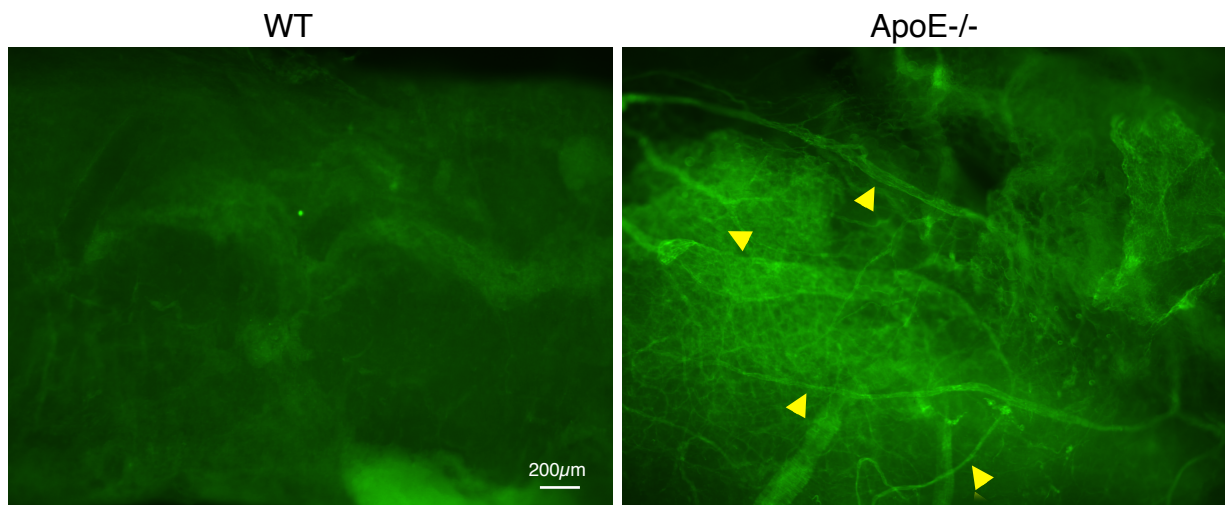


Supplemental Figure 1: A) Total cholesterol and **B)** triglyceride plasma levels of (young WT: $n=4$, 8-12 weeks, M/F 0.5; aged WT: $n=4$, 54-58 weeks, M/F 0.5; young apoE^{-/-}: $n=4$, 8-12 weeks, M/F 0.5; aged apoE^{-/-}: $n=4$, 54-58 weeks, M/F 0.5; WD: $n=4$, 32 weeks, M/F 0.5). Plasma cholesterol and triglyceride levels were measured within 3 hours of obtaining the blood from the animals, mean \pm SEM. * $P<0.05$, ** $P<0.01$.



Supplemental Figure 2: Representative whole mount immunofluorescence staining of abdominal aortas for the endothelial cell marker CD31 (green). Atherosclerotic aortas showed increased adventitial angiogenesis (arrowheads) compared to wild type controls. *Left*, aged WT (57 week old male). *Right*, aged apoE^{-/-} (58 week old male).