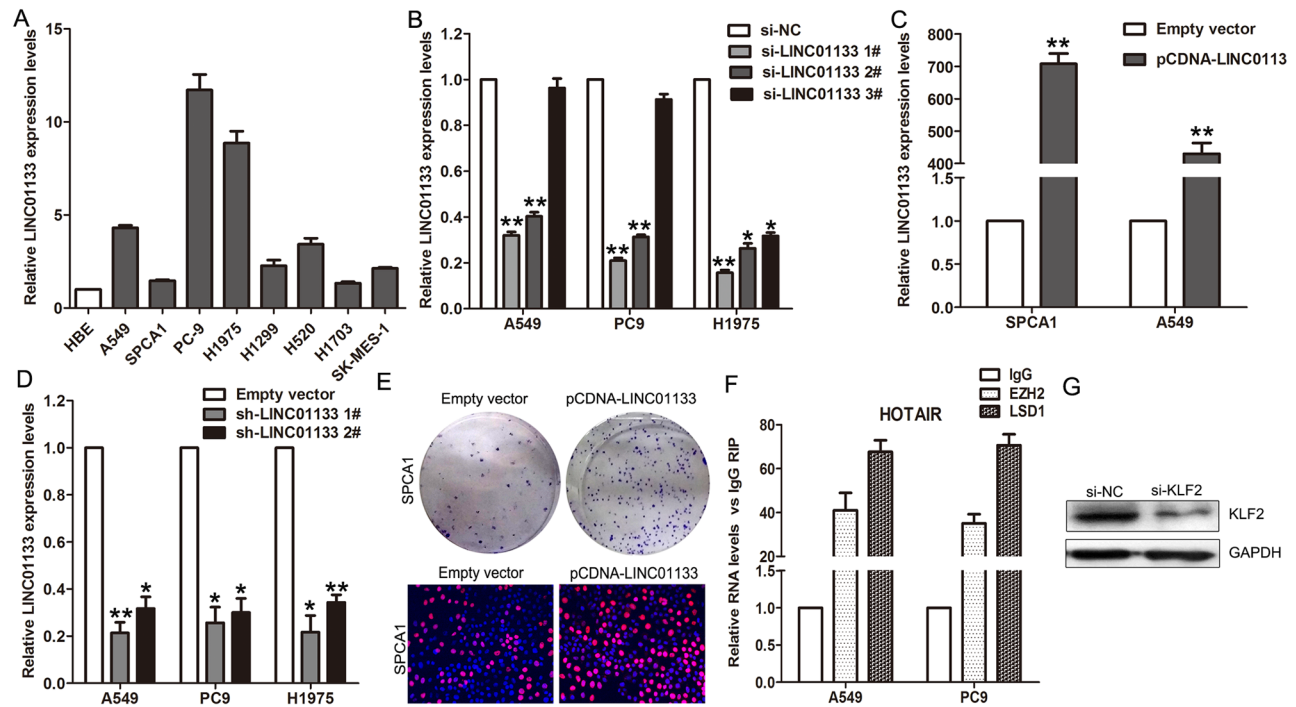
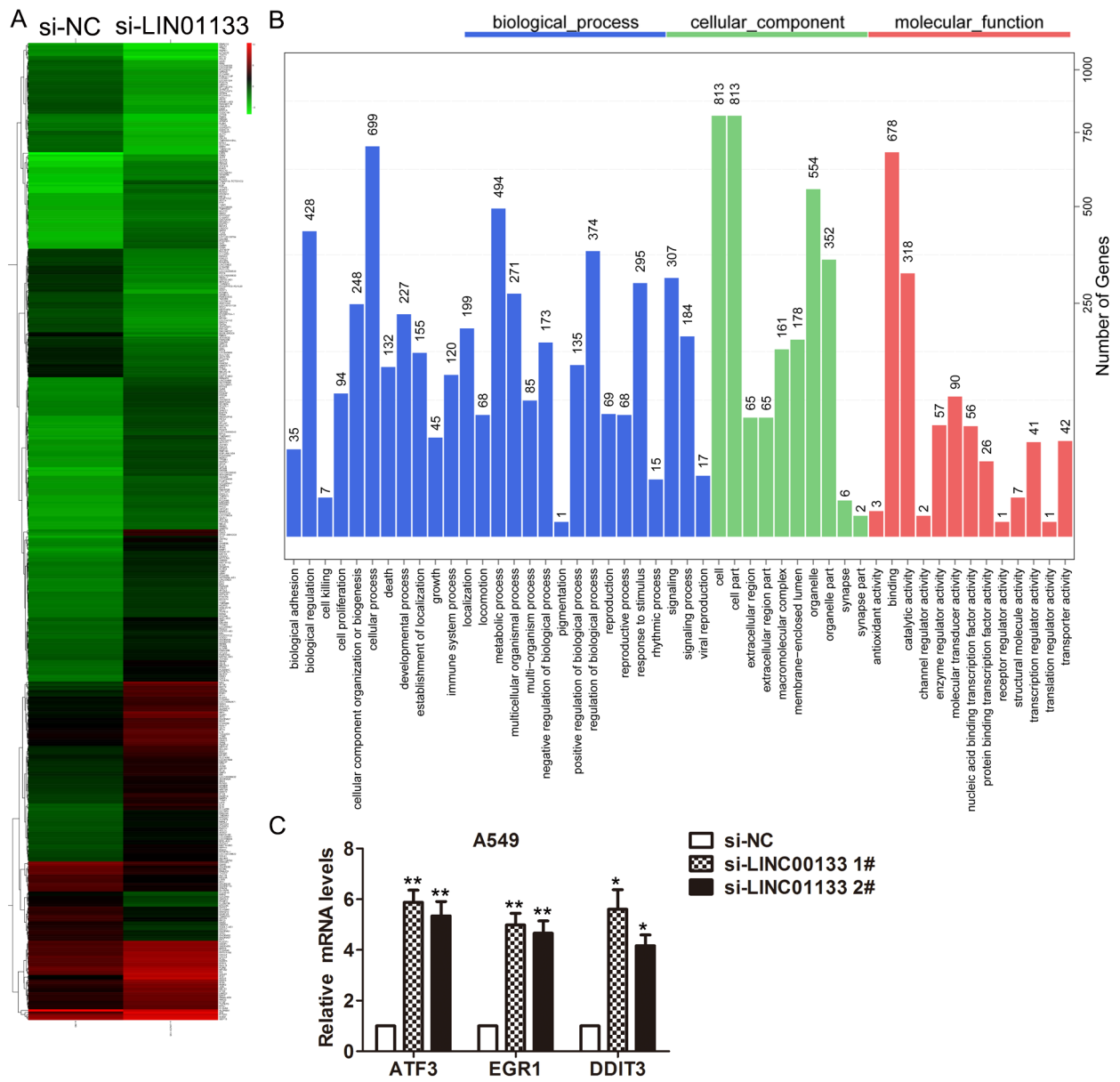


SUPPLEMENTARY FIGURES AND TABLE



Supplementary Figure S1: A–D. LINC01133 expression levels were detected by qPCR in NSCLC cells. E. EdU incorporation and colon formation assays to evaluate the effect of LINC01133 over-expression on cell proliferation of SPCA1. F. RNA levels in immunoprecipitates were determined by qPCR. Expression levels of HOTAIR RNA were presented as fold enrichment relative to IgG immunoprecipitates. G. Protein level of KLF2 was determined by western blot. * $P < 0.05$ and ** $P < 0.01$.



Supplementary Figure S2: Identification of LINC01133 targets in NSCLC cells. A. The entire repertoire of LINC01133-affected genes was investigated by RNA sequencing in A549 cells after knockdown of LINC01133. B. GO and pathway analysis of the up or down-regulated genes after LINC01133 knockdown. C. The ATF3, DDIT3 and EGR1 expression levels were detected by qPCR. * $P < 0.05$ and ** $P < 0.01$.

Supplementary Table S1: The primers, siRNAs and shRNAs sequence
See Supplementary File 1