

Title: The hidden teeth of sloths: evolutionary vestiges and the development of a simplified dentition.

Authors

Lionel Hautier¹

Helder Gomes Rodrigues^{2,3}

Guillaume Billet²

Robert J. Asher⁴

Author affiliations

¹Institut des Sciences de l'Evolution de Montpellier, Université Montpellier, CNRS, IRD, EPHE, Cc 064; place Eugène Bataillon, 34095 Montpellier Cedex 5, France.

² Sorbonne Universités, CR2P, UMR CNRS 7207, Univ Paris 06, Muséum national d'Histoire naturelle, 8 rue Buffon, 75005 Paris, France.

³Mécanismes adaptatifs et évolution (MECADEV), UMR 7179, CNRS, Funevol team, Muséum national d'Histoire naturelle, 55 rue Buffon, Bat. Anatomie Comparée, CP 55, 75005 Paris, France.

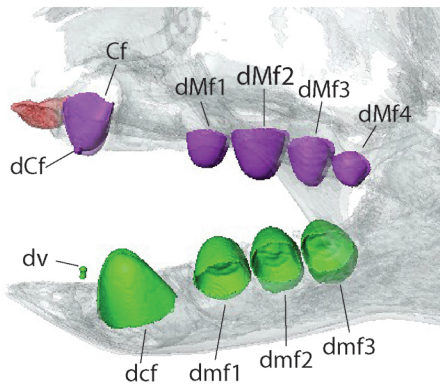
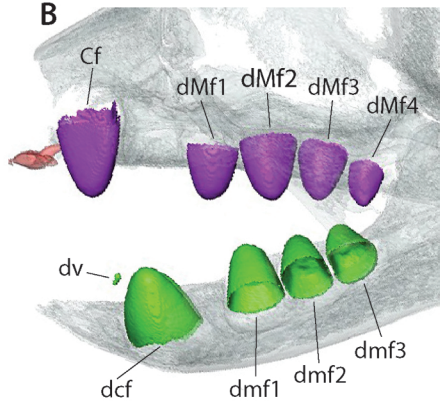
⁴Department of Zoology, University of Cambridge, Downing St., Cambridge CB2 3EJ, UK.

Corresponding authors

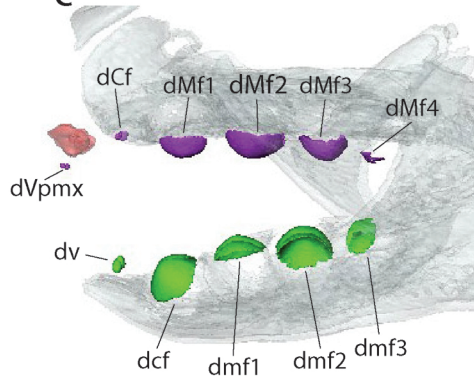
Lionel Hautier: lionel.hautier@univ-montp2.fr

S1 – Dental terminology used for the comparisons between *Choloepus* (A and B) and *Bradypus* (C and D). Upper teeth are in violet; lower teeth are in green; premaxillary bone is in red.

Choloepus

A**B**

Bradypus

C**D**