

Supplementary Materials

for the manuscript by S.Sales, J.Graessler, S.Ciucci, R.Al-Atrib, T.Vihervaara, K.Schuhmann, D.Kauhanen, M.Sysi-Aho, S.R.Bornstein, M.Bickle, C.V.Cannistraci, K.Ekroos and A.Shevchenko
"Gender, Contraceptives and Individual Metabolic Predisposition Shape a Healthy Plasma Lipidome"

Table of Content

Supplementary Table S1 Basal characteristics of the study cohort (extended table).

Supplementary Table S5 Exclusion criteria and gender-specific causes for exclusion from the study

Supplementary Figure S1: Concentrations of individual lipid species

Supplementary Figure S2 Total concentrations of lipid classes.

Supplementary Figure S3 Values of clinical and anthropometric indices.

Supplementary Tables S2, S3 and S4 are Excel spreadsheets and uploaded as separate files.

Supplementary Table 1. Basal characteristics of the study cohort (extended table).

Parameter	units	Men (n=36)			Women (n=35)			Mann-WhitneyTest Benjamini corrected (p)
		Mean	SD	95% CI	Mean	SD	95% CI	
Age	years	24.0	2.7	23.1-24.9	25.5	2.8	24.5-26.4	0.0244
Weight	kg	77.2	8.8	74.2-80.1	61.6	7.9	58.9-64.3	3.418E-08
Height	m	1.82	0.06	1.80-1.84	1.70	0.06	1.68-1.72	3.756E-08
BMI	Kg/m ²	23.4	2.4	22.6-24.2	21.3	2.2	20.6-22.0	0.001
Waist	cm	80.6	8.2	77.8-83.3	69.3	6.6	67.0-71.6	4.569E-08
Hip	cm	101.8	6.4	99.6-103.9	100.2	6.1	98.0-102.3	0.1374
Waist-to-hip ratio		0.79	0.05	0.77-0.81	0.69	0.06	0.67-0.71	5.021E-09
Systolic blood pressure	mmHg	122.5	9.4	119.3-125.7	113.4	8.7	110.4-116.4	0.0003
Diastolic blood pressure	mmHg	69.9	7.2	67.4-72.3	65.4	6.1	63.3-67.5	0.009
Triglycerides	mmol/L	0.78	0.27	0.69-0.87	0.83	0.26	0.74-0.92	0.205
Total cholesterol	mmol/L	4.23	0.55	4.04-4.41	4.57	0.47	4.41-4.73	0.205
LDL-cholesterol	mmol/L	2.44	0.54	2.25-2.62	2.40	0.49	2.23-2.57	0.377
HDL-cholesterol	mmol/L	1.55	0.31	1.45-1.66	1.93	0.31	1.83-2.04	2.262E-05
Hemoglobin	mmol/L	9.47	0.60	9.27-9.68	8.34	0.51	8.16-8.51	7.106E-09
Hematocrit		0.44	0.02	0.43-0.45	0.39	0.02	0.39-0.40	2.9E-09
Leukocytes	GPt/L	5.50	1.03	5.15-5.84	5.57	1.20	5.16-5.98	0.384
Platelets	GPt/L	216.4	45.1	201.2-231.7	245.8	49.5	228.8-262.8	0.009
Erythrocytes	TPt/L	5.05	0.25	4.97-5.14	4.49	0.26	4.40-4.58	7.859E-09
Creatinine	μmol/L	84.1	10.4	80.6-87.7	71.7	6.9	69.3-74.0	1.37E-06
Alanine aminotransaminase	μmol/L*s	0.37	0.14	0.32-0.41	0.25	0.10	0.22-0.29	0.0002
Gamma-glutamyltransferase	μmol/L*s	0.30	0.11	0.26-0.34	0.27	0.13	0.22-0.31	0.029
Uric acid	μmol/L	334.5	59.4	314.4-354.6	233.8	36.7	221.2-246.4	2.9E-09
C-reactive protein	mg/L	0.65	0.75	0.39-0.90	1.33	1.49	0.81-1.84	0.055
Hemoglobin A1c	%	5.17	0.31	5.07-5.28	5.21	0.21	5.14-5.28	0.328
Plasma glucose	mmol/L	4.54	0.36	4.42-4.66	4.49	0.30	4.39-4.60	0.282
Free fatty acids	mmol/L	0.31	0.16	0.26-0.37	0.37	0.19	0.30-0.43	0.137
Proinsulin	pmol/L	2.10	1.54	1.58-2.62	2.15	1.84	1.51-2.78	0.386
C-peptide	pmol/L	548.9	216.3	475.7-622.1	597.7	190.9	532.2-663.3	0.116
Insulin	pmol/L	48.3	26.6	39.3-57.3	58.3	40.8	44.3-72.3	0.115
Thyroid-stimulating-hormone	mU/L	2.84	1.81	2.22-3.45	2.60	1.15	2.21-2.99	0.382
Luteinizing hormone	U/L	3.37	1.12	2.99-3.75	3.16	2.77	2.21-4.11	0.054
Follicle-stimulating hormone	U/L	2.76	1.62	2.21-3.31	3.83	3.11	2.76-4.90	0.12
Cortisol	nmol/L	433.5	116.7	394.0-472.9	446.0	156.6	392.2-499.8	0.367
Dehydroepiandrosterone	nmol/L	26.5	10.2	23.0-29.9	24.5	12.3	20.3-28.8	0.176
Sex hormone-binding globulin	nmol/L	22.4	7.4	19.9-24.9	94.0	66.8	71.1-117.0	5.021E-09

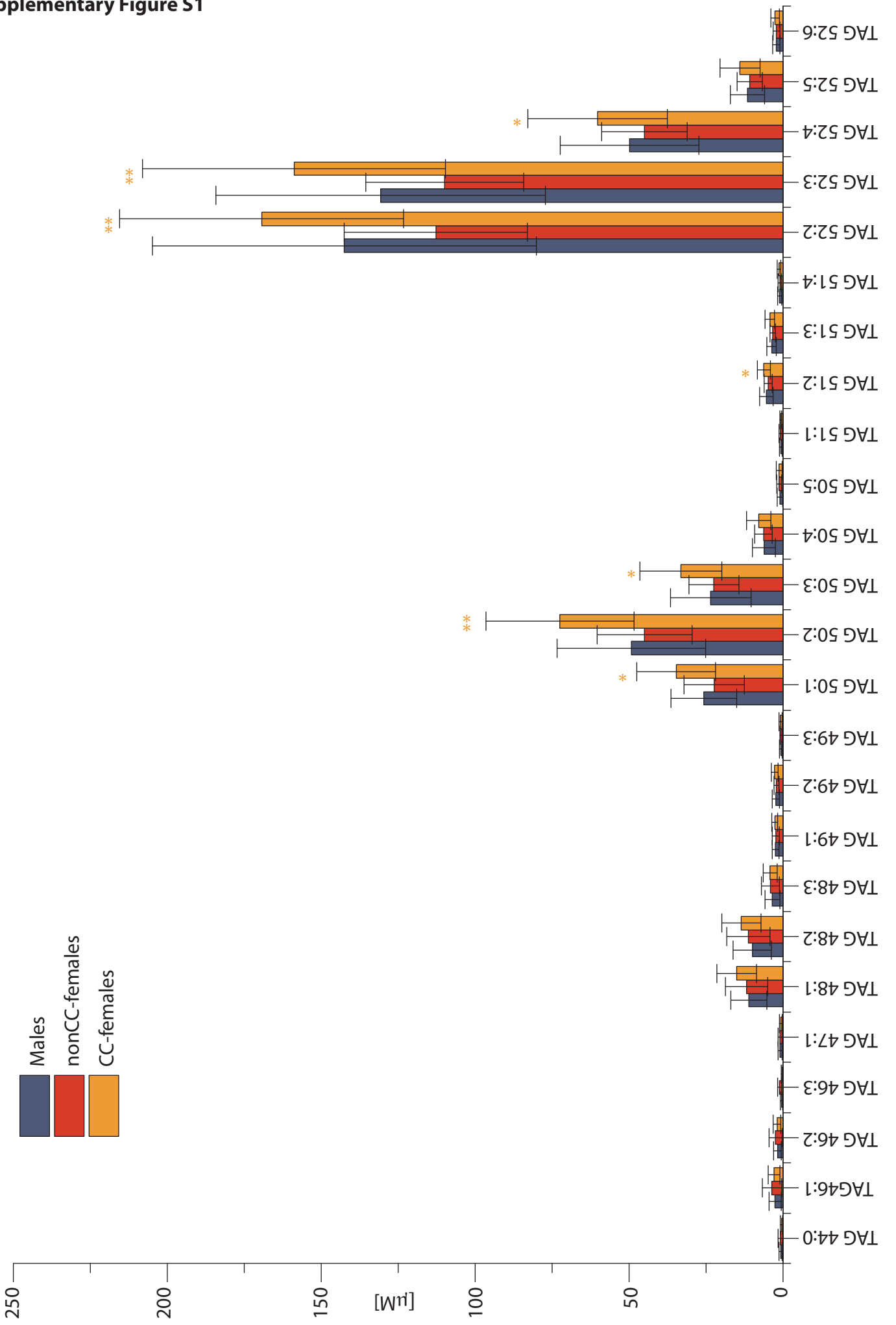
Supplementary Table S5.
Exclusion criteria and gender-specific causes for exclusion from the study

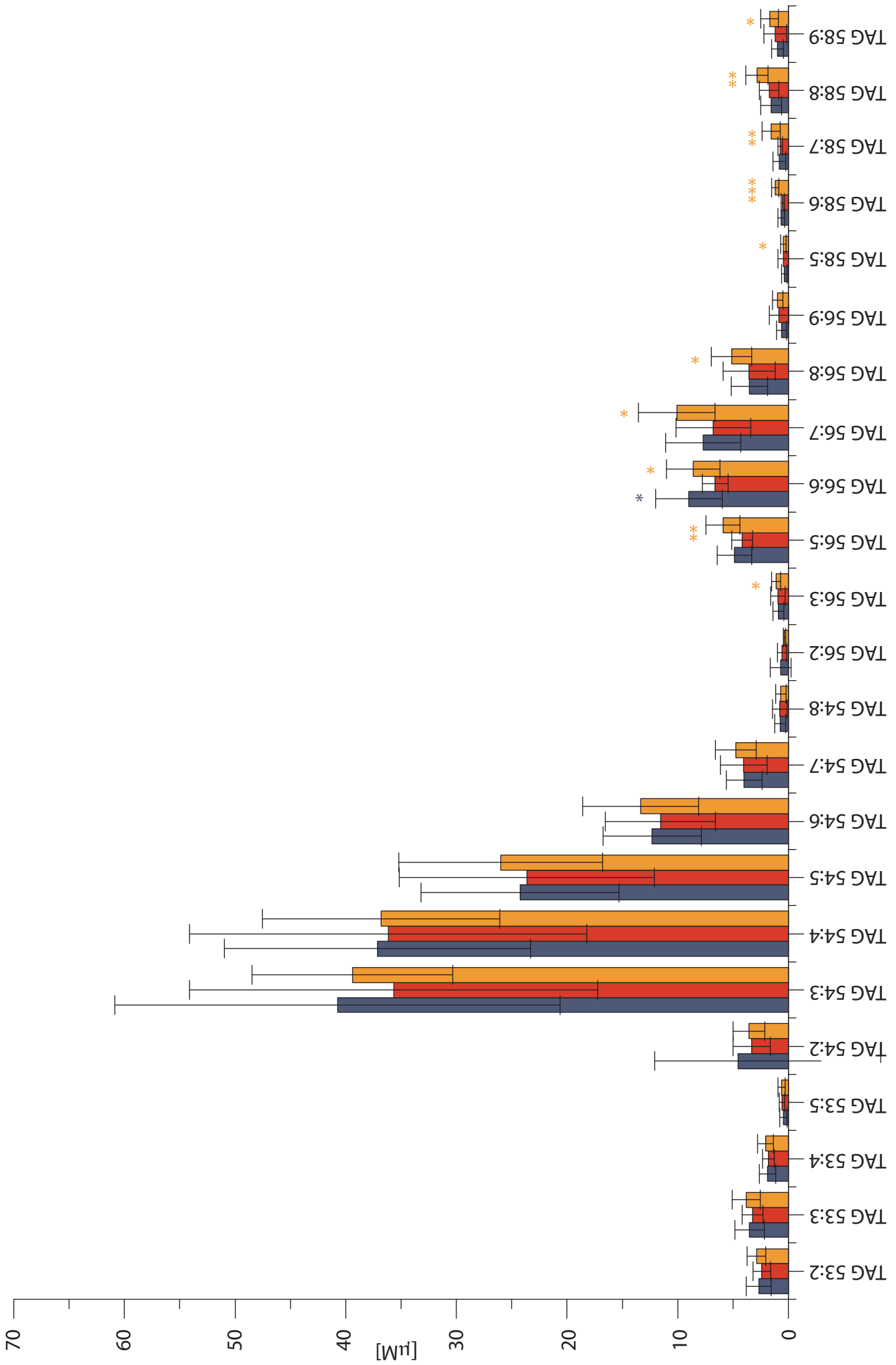
Parameter	units	Cut-off values	Excluded Individuals (n)	
			<i>Males (12)</i>	<i>Females (20)</i>
Blood pressure (systolic/diastolic)	mmHg	> 140 / 85		
ALAT	μmol/L*s	> 0.80		
γGT	μmol/L*s	> 0.80		
Serum creatinine	μmol/L	> 110 men / > 95 women		
C-reactive protein	mg/L	> 5	3	2
Hemoglobin	mmol/L	< 8.0 men / < 7.4 women		
HbA _{1C}	%	> 5.7		
Total cholesterol ¹	mmol/L	> 5.2	5	14
LDL-cholesterol ¹	mmol/L	> 4.0		
HDL-cholesterol ¹	mmol/L	< 0.9 men / < 1.1 women		
Triglycerides ¹	mmol/L	> 1.7	2	
Plasma glucose ¹	mmol/L	> 5.5		
Plasma insulin ¹	pmol/L	> 250		1
Uric acid ¹	μmol/L*s	> 490	1	

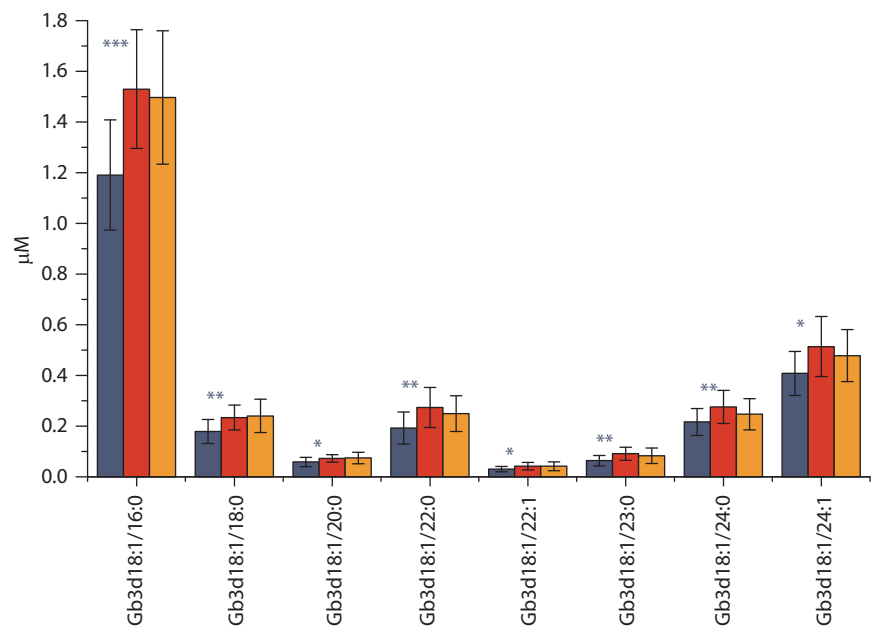
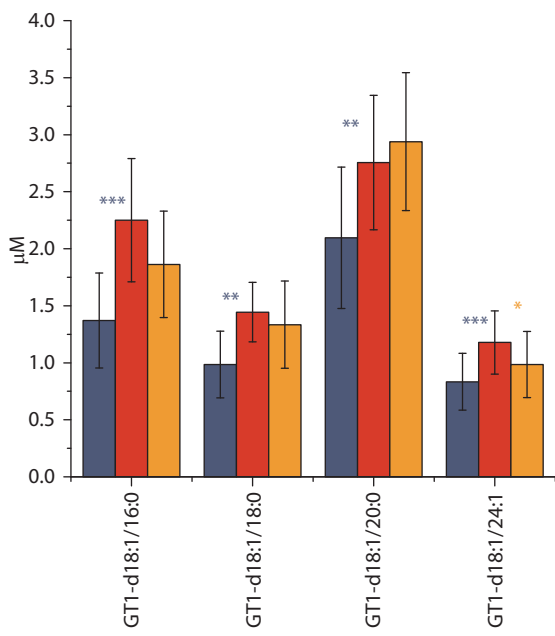
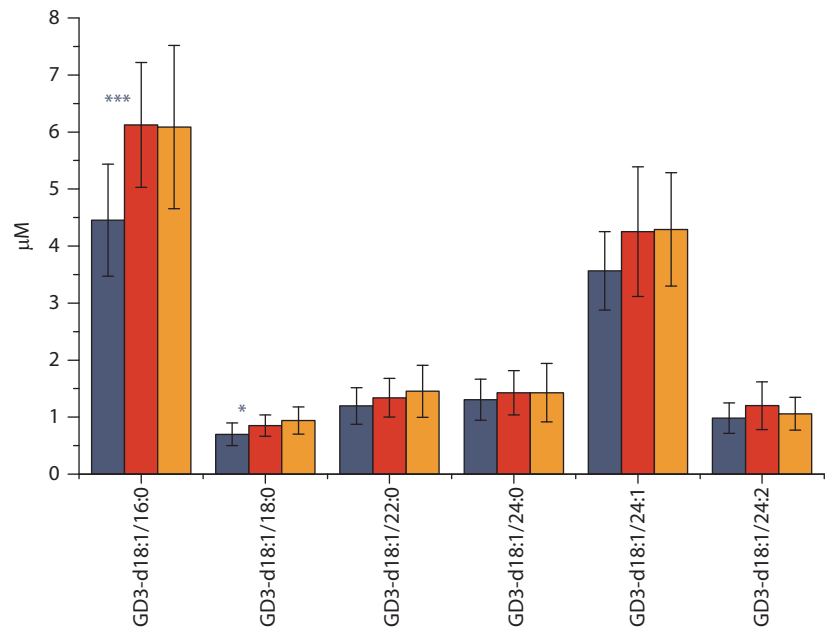
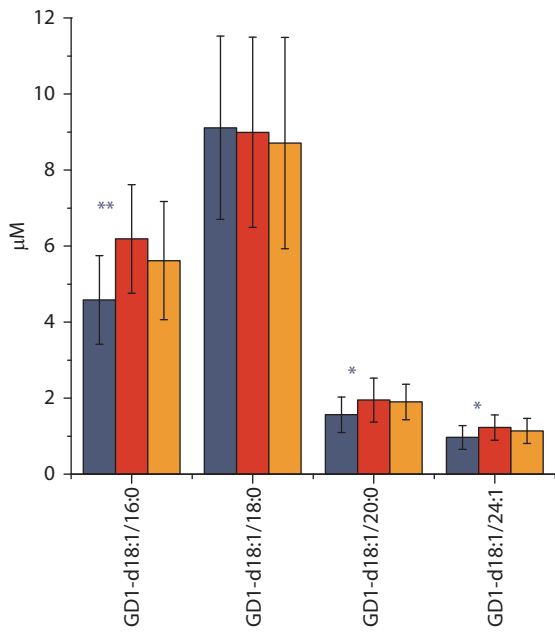
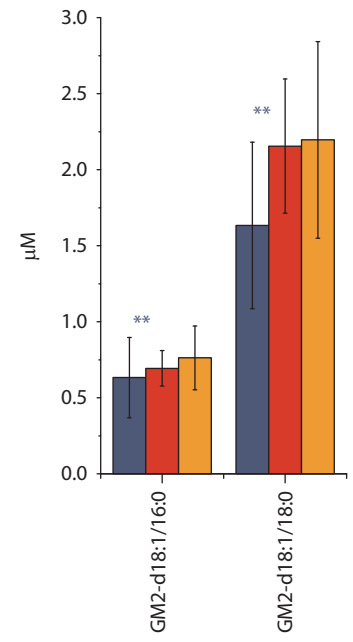
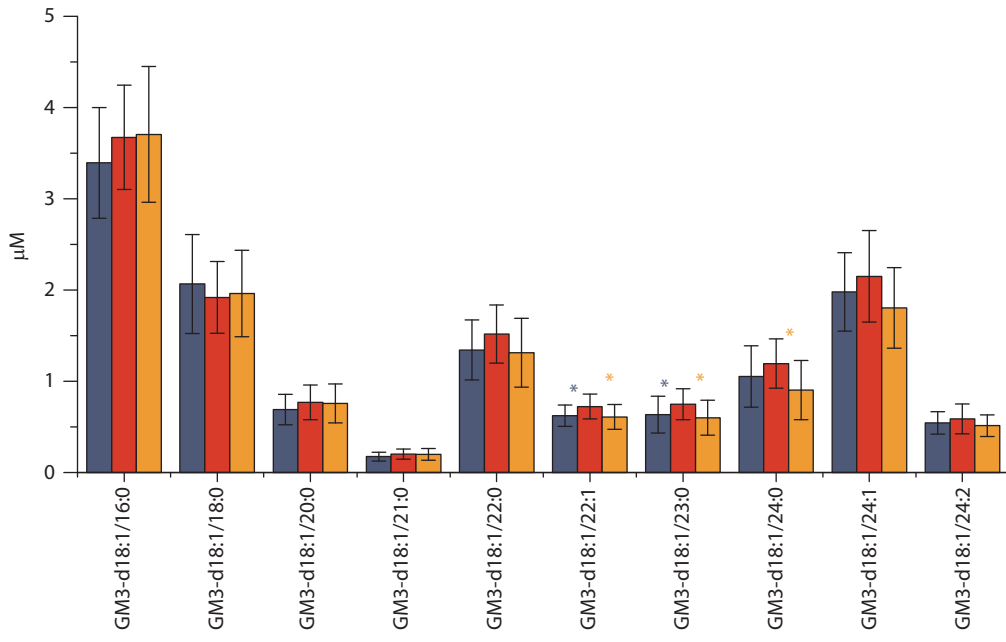
¹ values after 12h overnight fasting; ALAT: alanine aminotransferase, γGT: gamma glutamyltransferase, HbA_{1C}: glycosylated hemoglobin

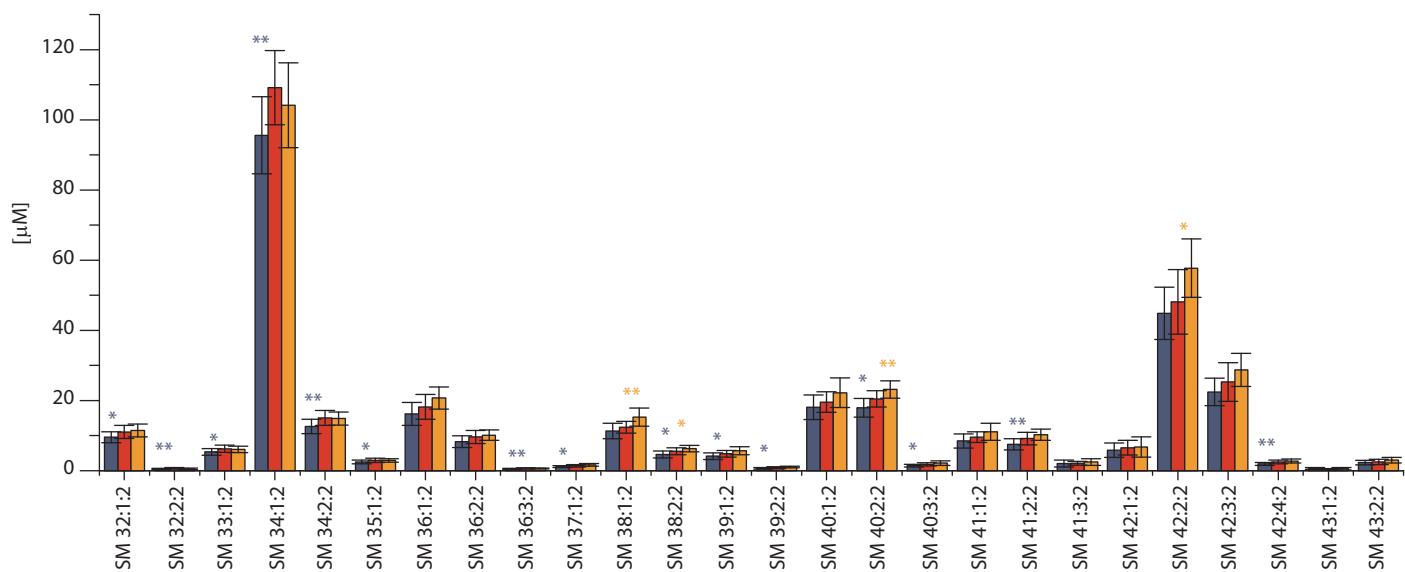
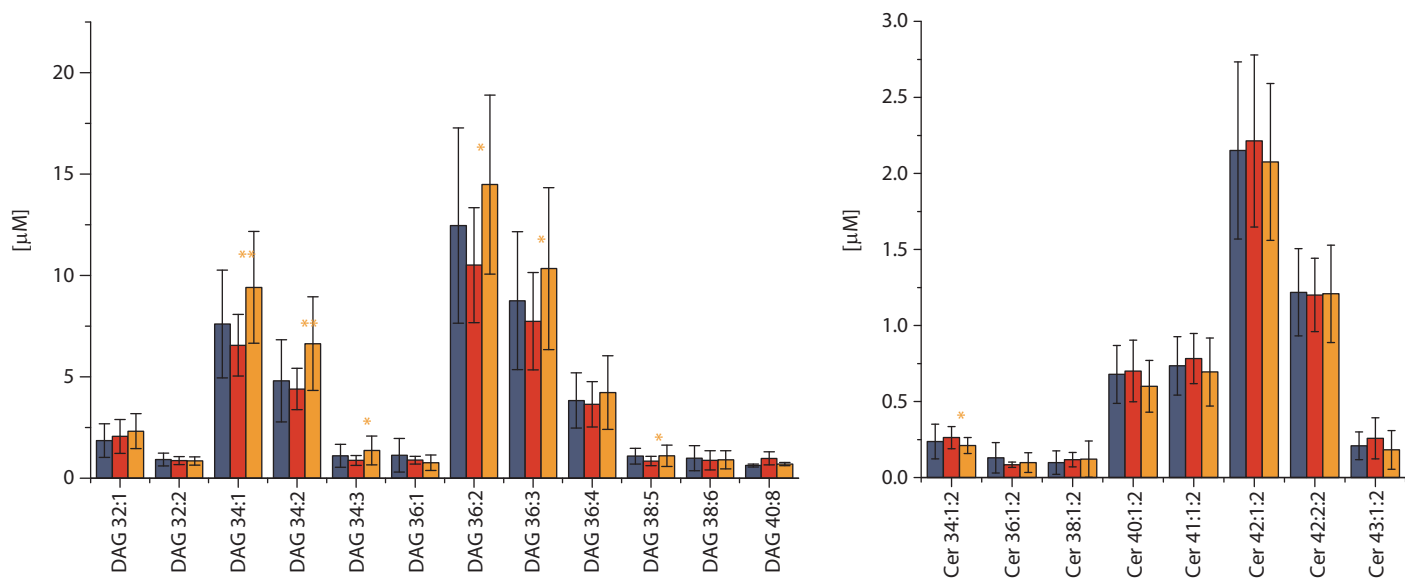
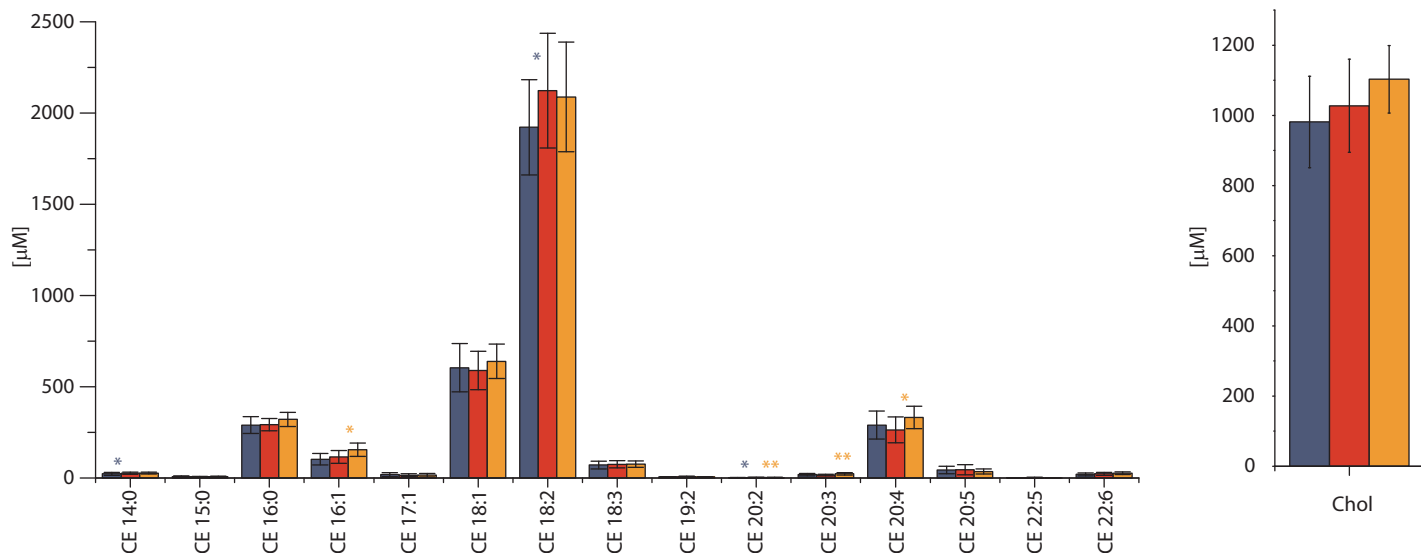
One male individual was excluded due to missing data; two females were excluded due to taking iron preparations; one due to lactation

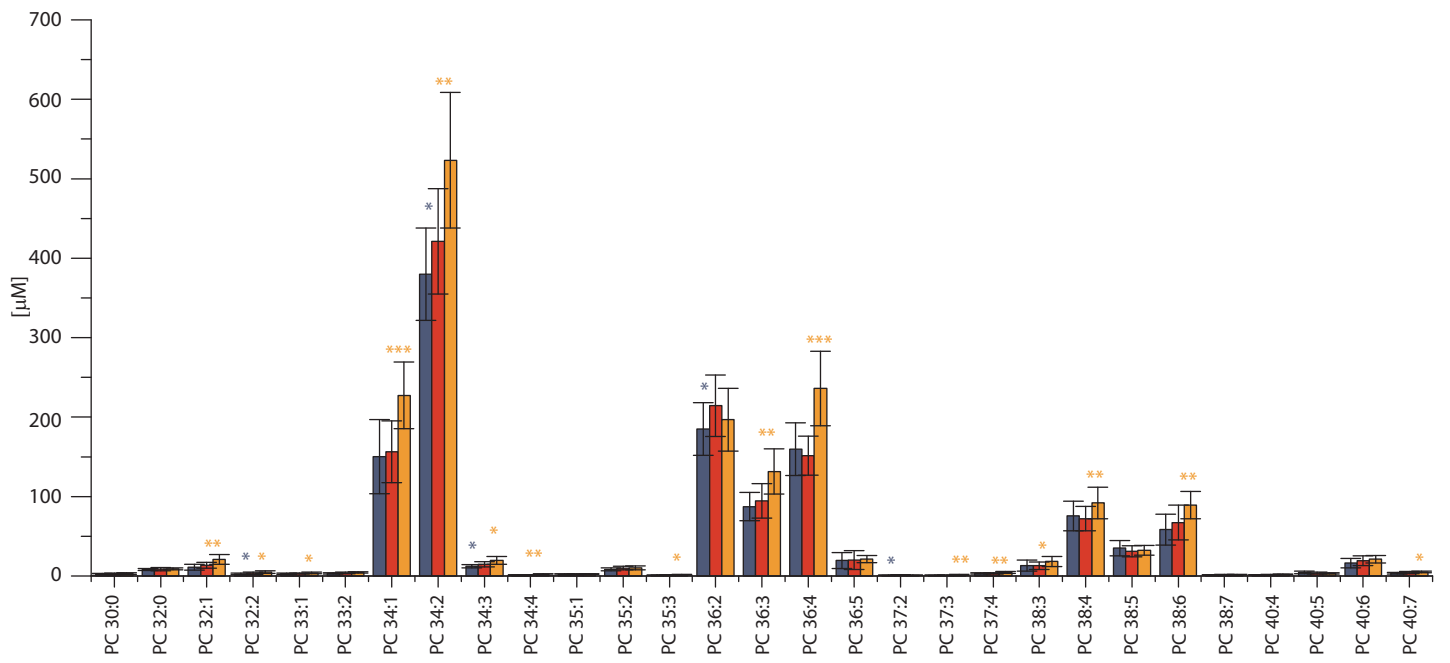
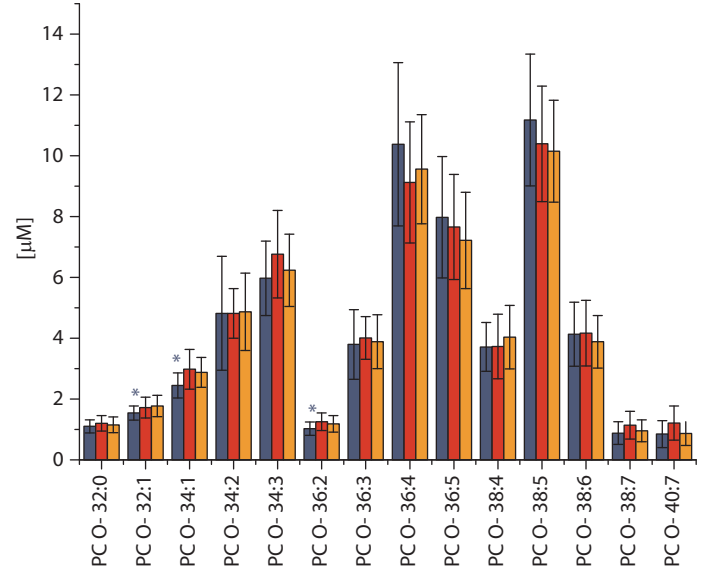
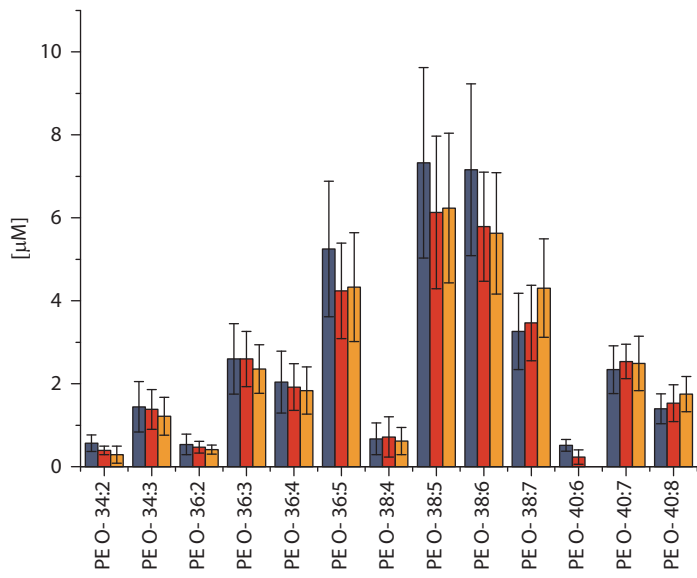
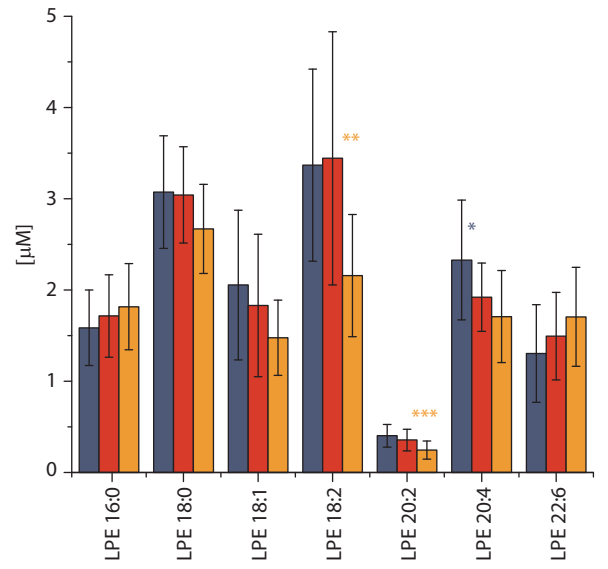
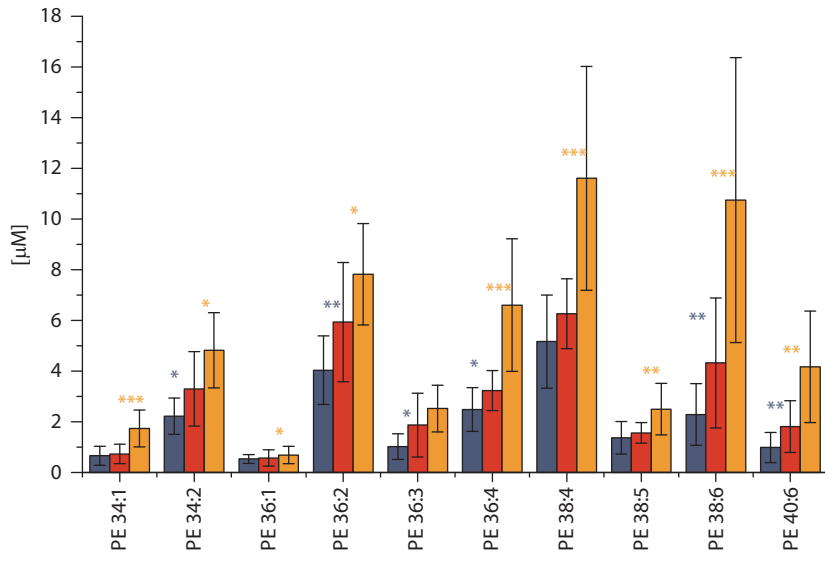
Supplementary Figure S1

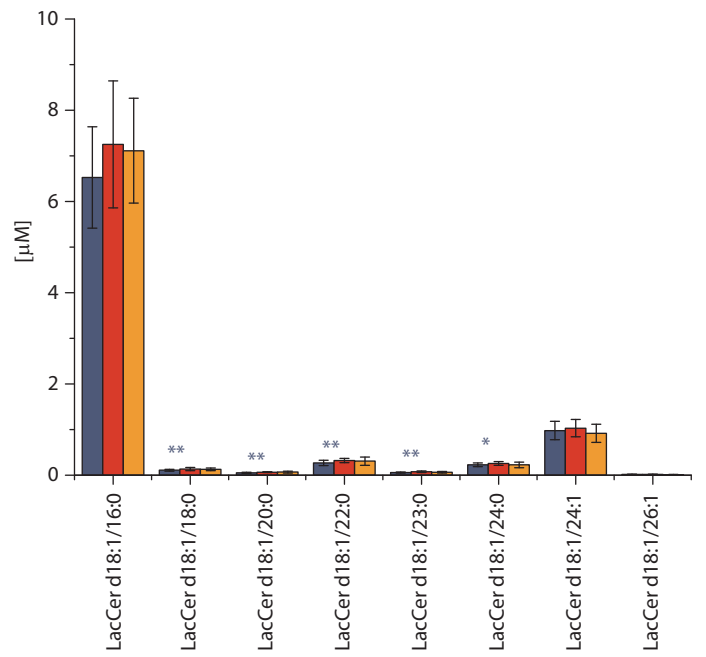
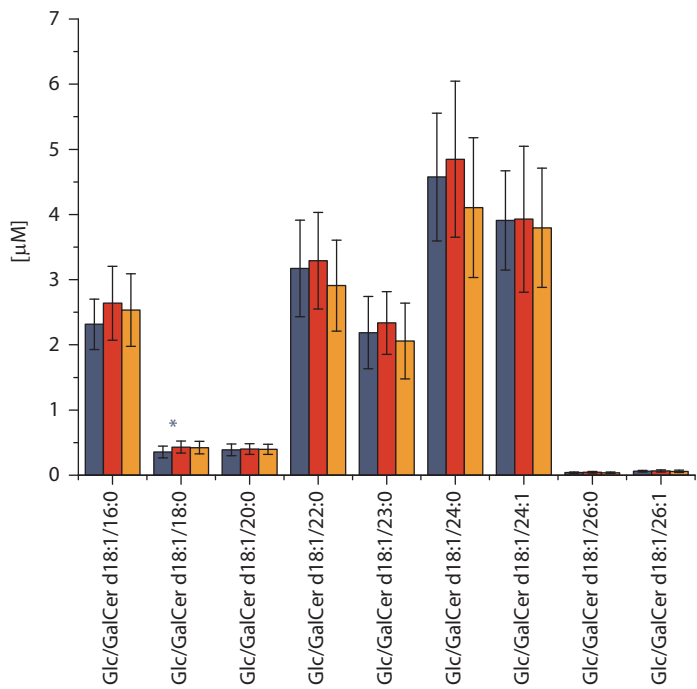
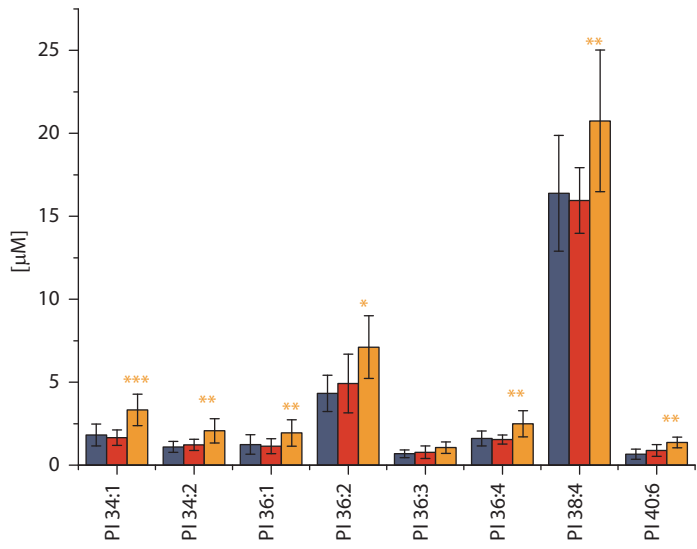
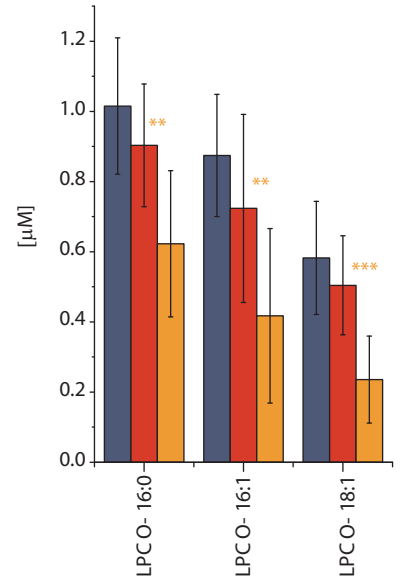
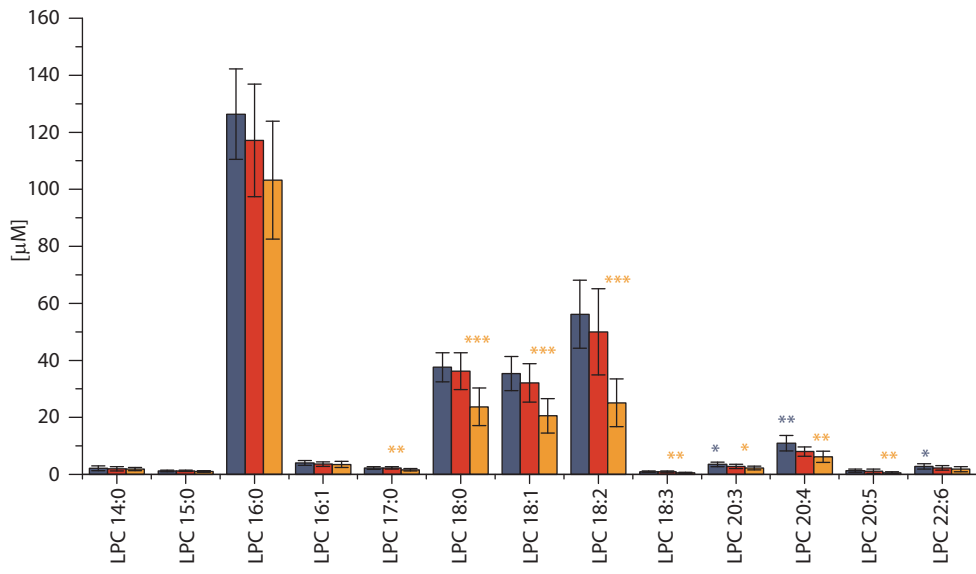


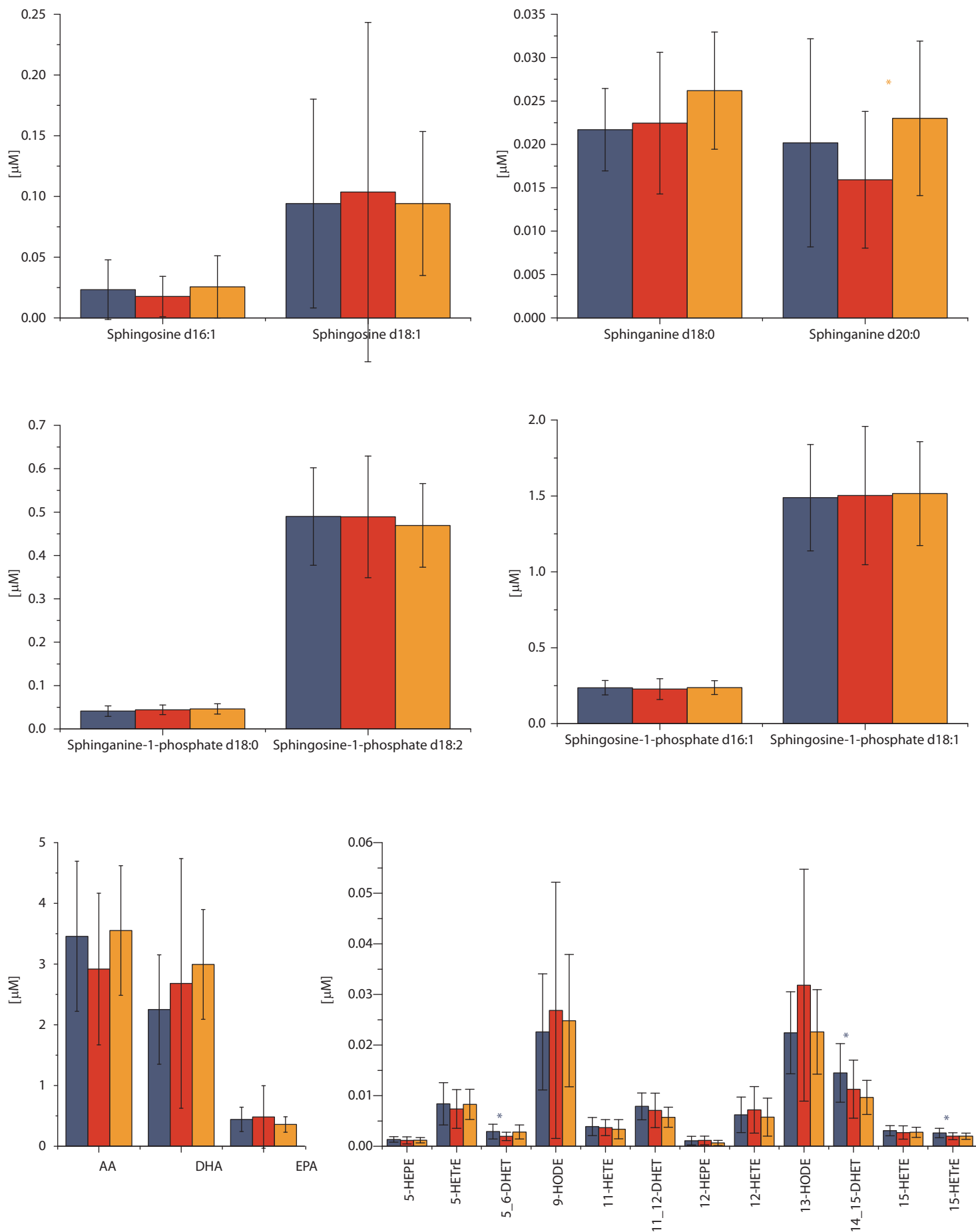






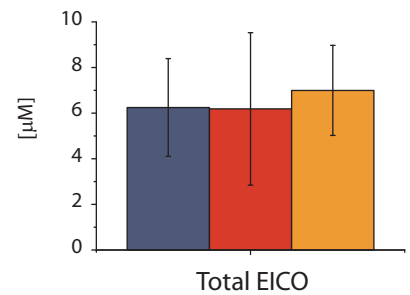
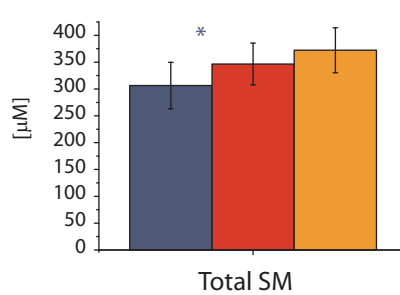
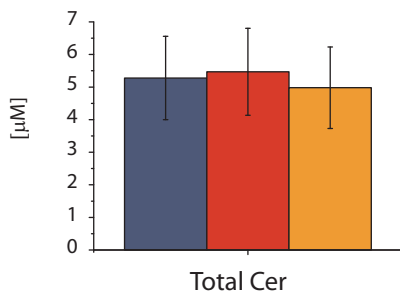
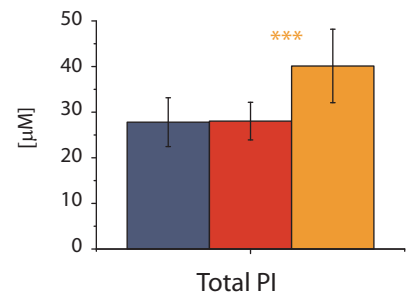
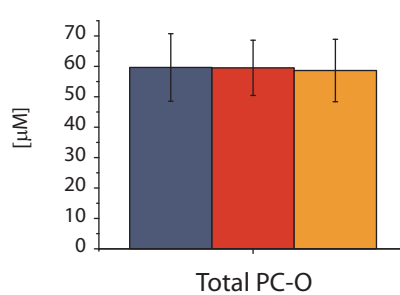
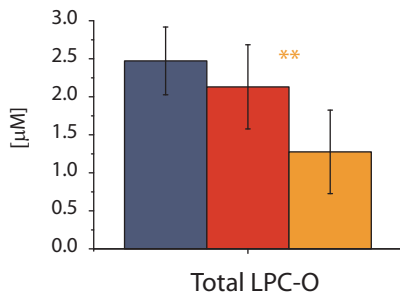
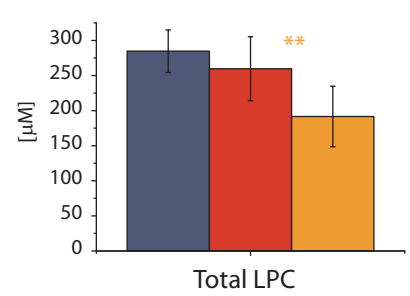
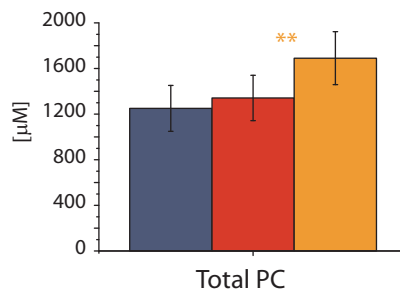
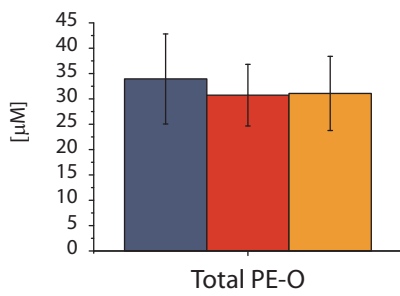
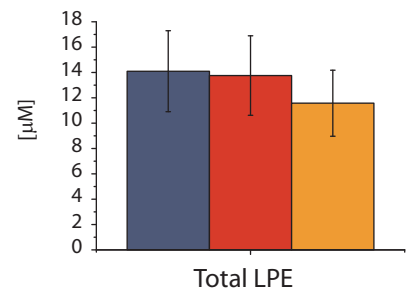
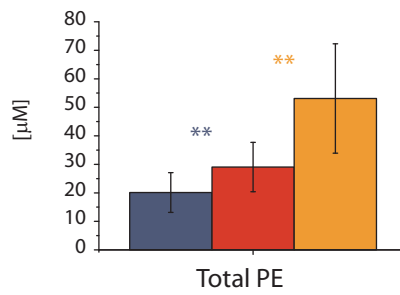
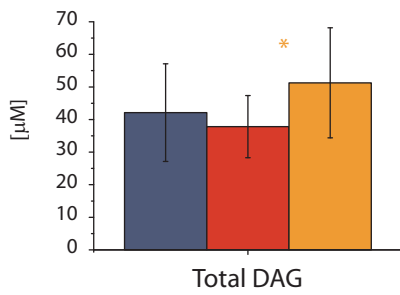
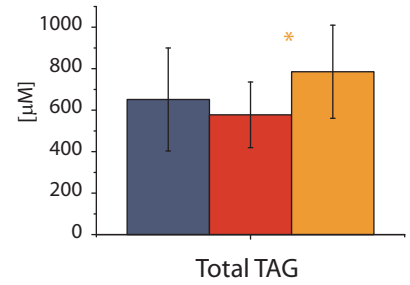
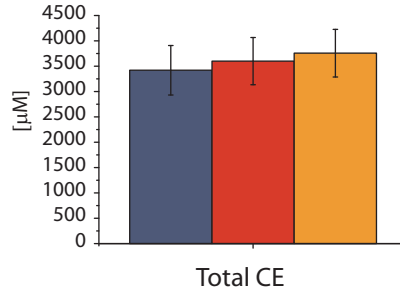
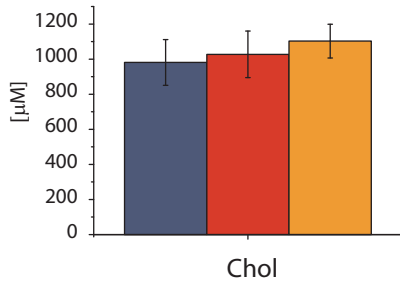
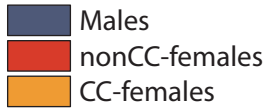


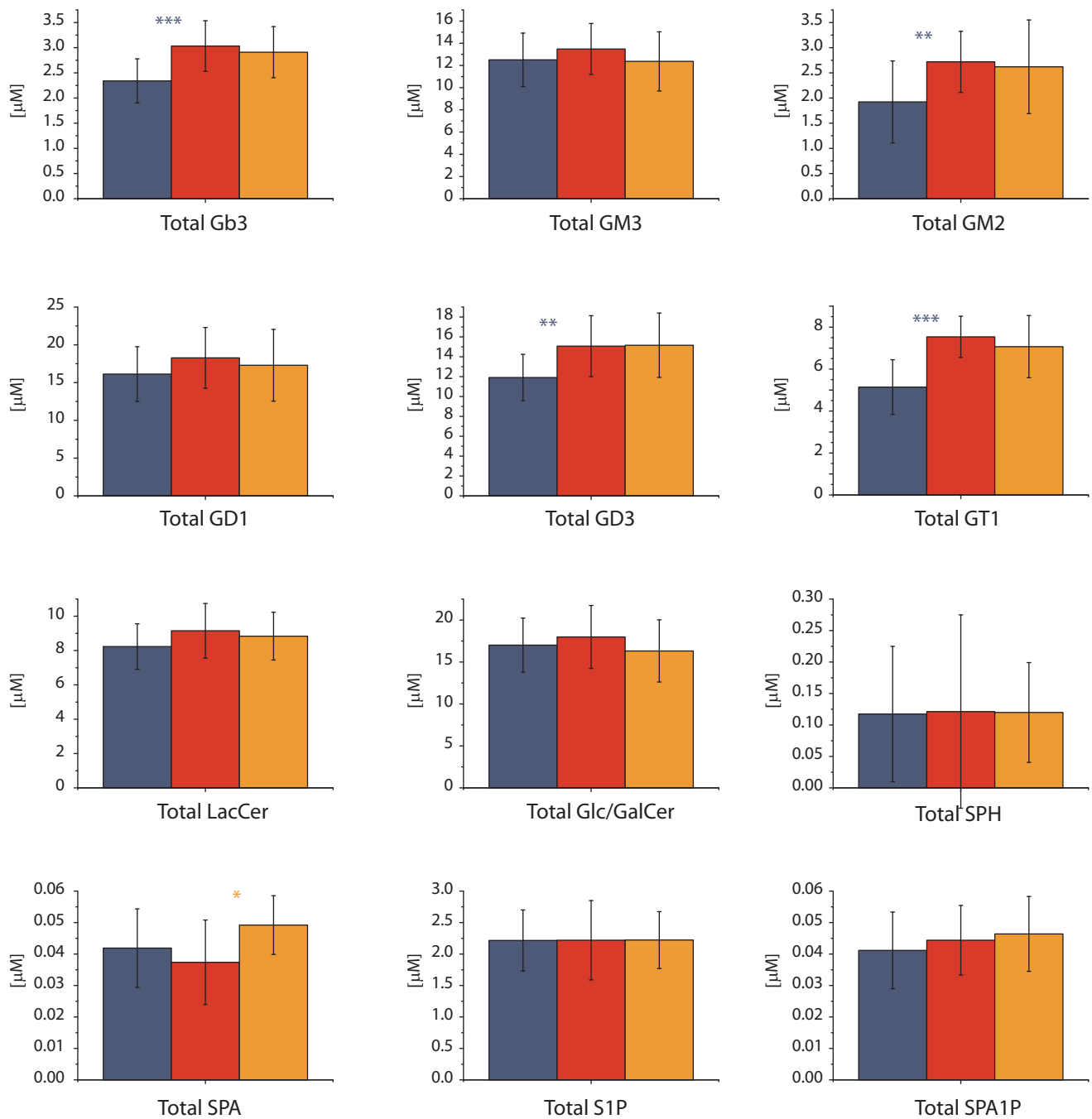




Supplementary Figure S1. Concentrations of individual lipid species. Comparison between males ($n=36$), and nonCC-females ($n=16$) (blue stars), and between nonCC-females ($n=16$) and CC-females ($n=19$) (orange stars). Data are the mean \pm SD. Statistic was performed by nonparametric Mann-Whitney test; Benjamini corrected. * $p < 0.05$; ** $p < 0.01$; *** $p < 0.001$.

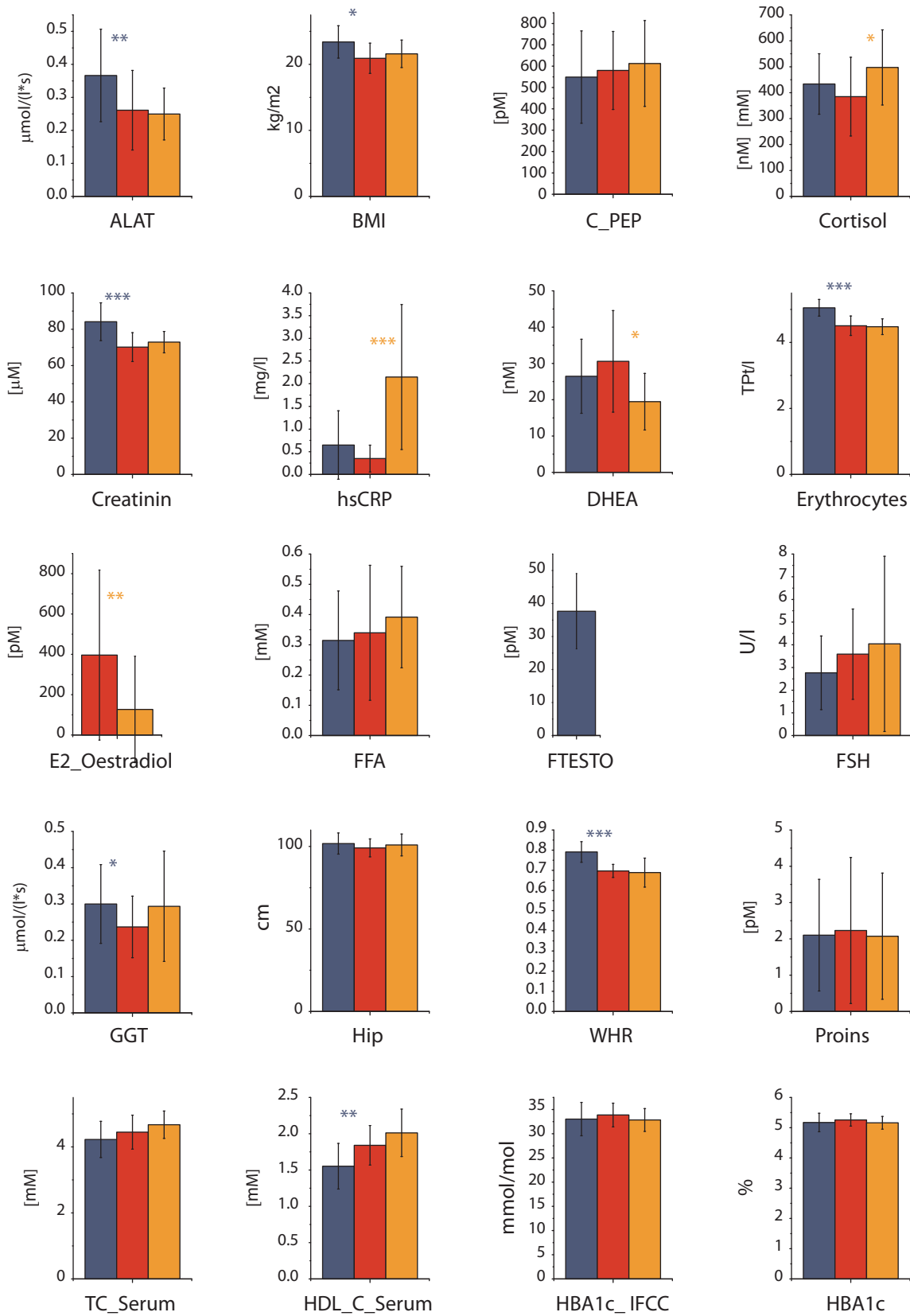
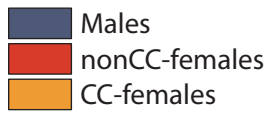
Supplementary Figure S2

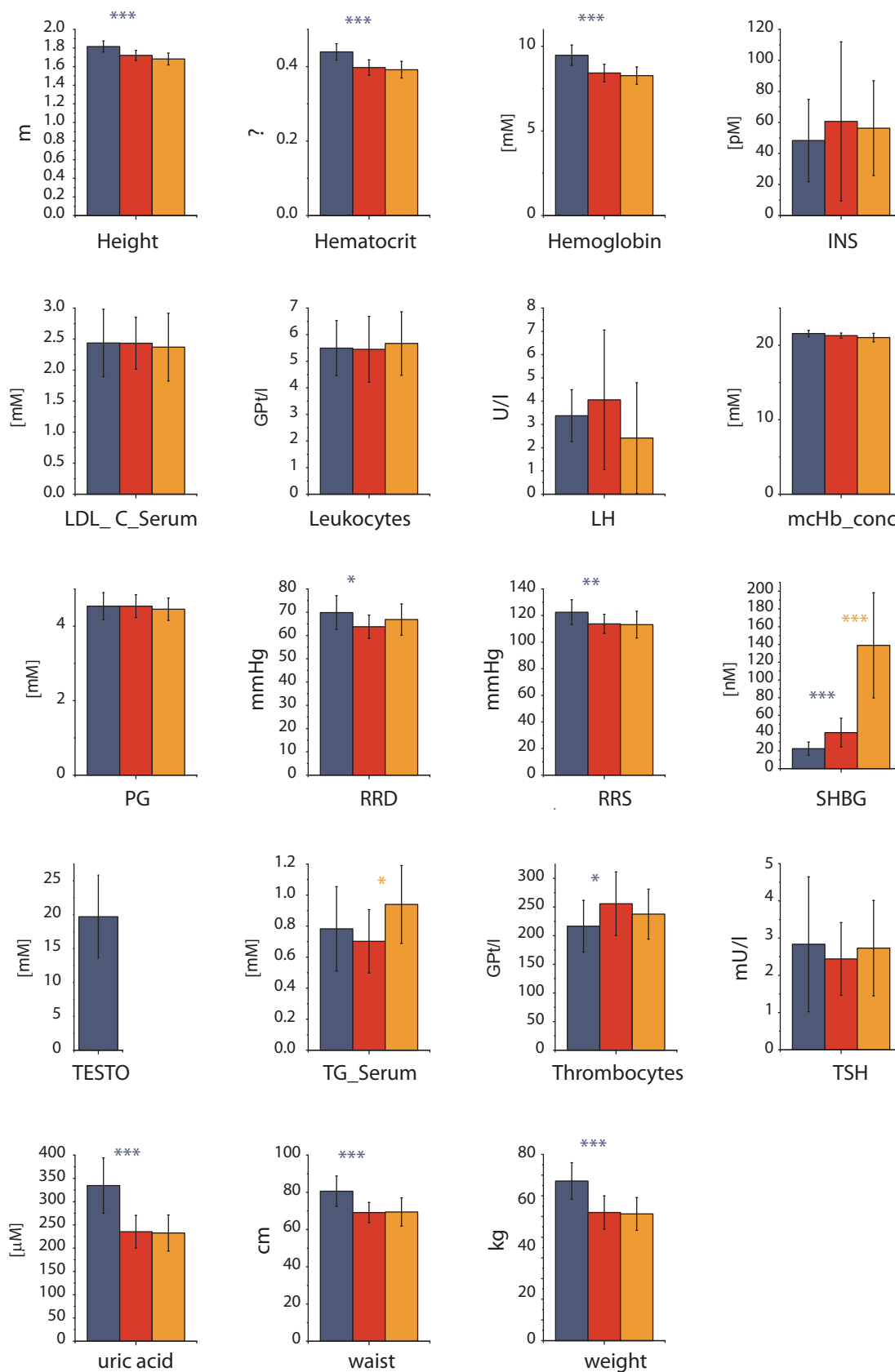




Supplementary Figure S2. Total concentrations of lipid classes. Comparison between males ($n=36$), and nonCC-females ($n=16$) (blue stars), and between nonCC-females ($n=16$) and CC-females ($n=19$) (orange stars). Data are the mean \pm SD. Statistics was performed by nonparametric Mann-Whitney test; Benjamini corrected. * $p < 0.05$; ** $p < 0.01$; *** $p < 0.001$.

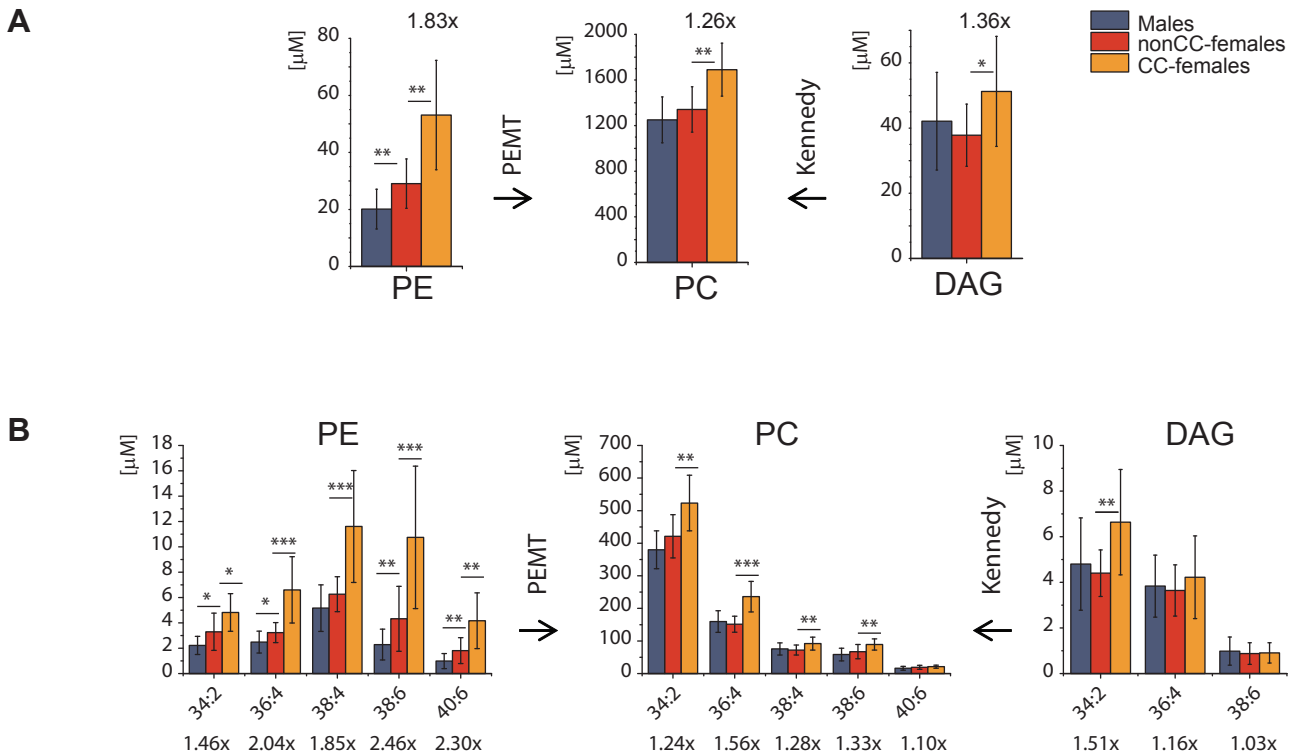
Supplementary Figure S3





Supplementary Figure S3. Values of clinical and anthropometric indices. Comparison between males ($n=36$), and nonCC-females ($n=16$) (blue stars), and between nonCC-females ($n=16$) and CC-females ($n=19$) (orange stars). Data are the mean \pm SD. Statistic was performed by nonparametric Mann-Whitney test; Benjamini corrected. * $p < 0.05$; ** $p < 0.01$; *** $p < 0.001$.

Supplementary Figure S4



Supplementary Figure S4. Estradiol-dependent and -independent regulation of lipid concentrations in plasma. (A) Total concentration of DAG, PE, and PC in males ($n=36$), nonCC-females ($n=16$), and CC-females ($n=19$). Fold differences between nonCC-females and CC-females are above the concentration bars. (B) Several abundant DAG, PE, and PC species and corresponding fold differences (shown below concentration bars) between nonCC-females and CC-females. Conversion of polyunsaturated PE species into corresponding PC is faster in nonCC-females compared to CC-females. * $p<0.05$; ** $p<0.01$; *** $p<0.001$ (nonparametric Mann-Whitney test; Benjamini corrected). Data are the mean \pm SD.