

Supplementary Appendix

This appendix has been provided by the authors to give readers additional information about their work.

Supplement to: Bergwitz C, Collins MT, Kamath RS, Rosenberg AE. Case 33-2011: a 56-year-old man with hypophosphatemia. *N Engl J Med* 2011;365:1625-35.

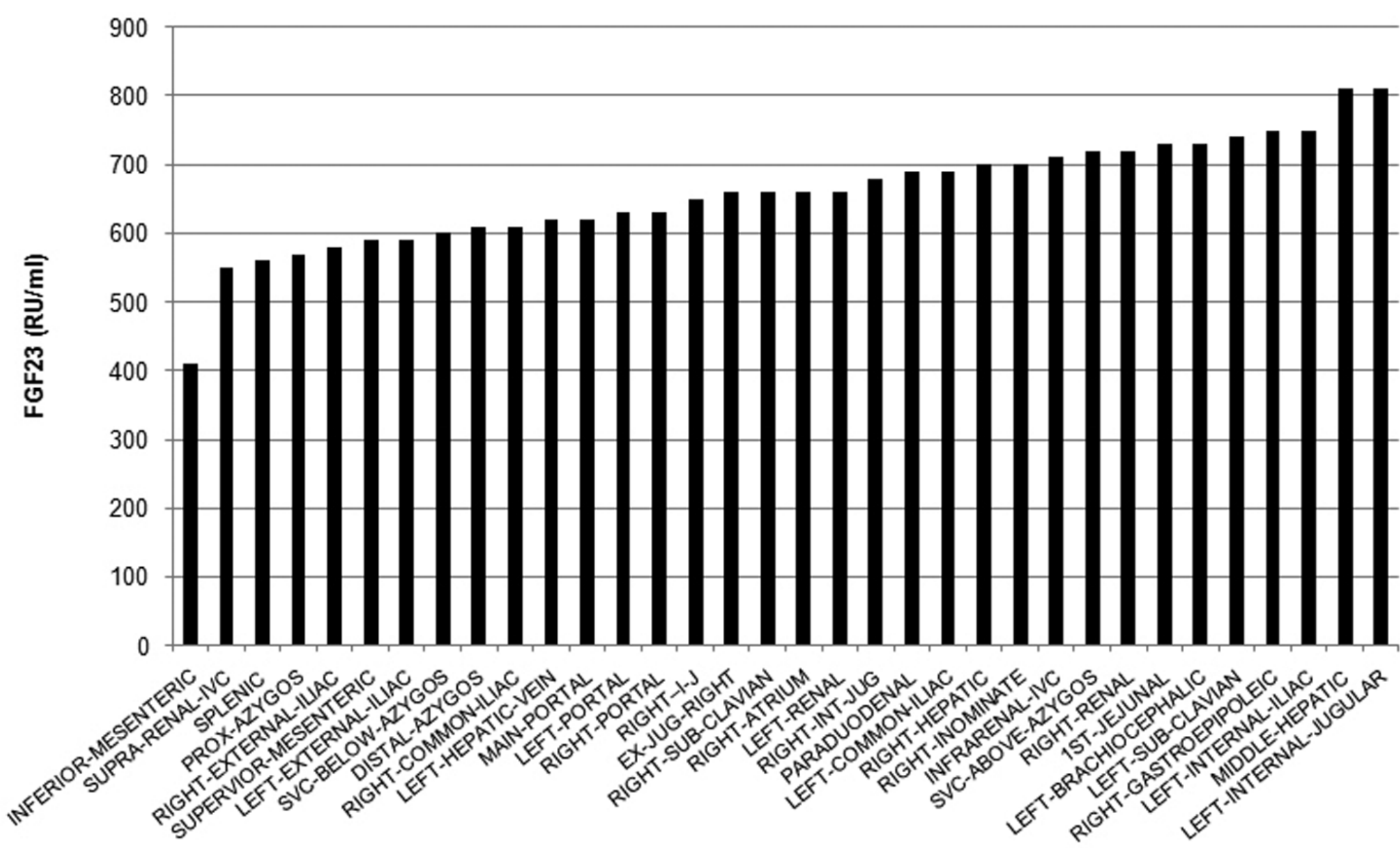
Supplemental Figure 1

A panoramic radiograph of the jaws shows postsurgical changes related to prior resection of the right mandible with placement of bone graft and fusion using a malleable plate and screw construct (arrow).



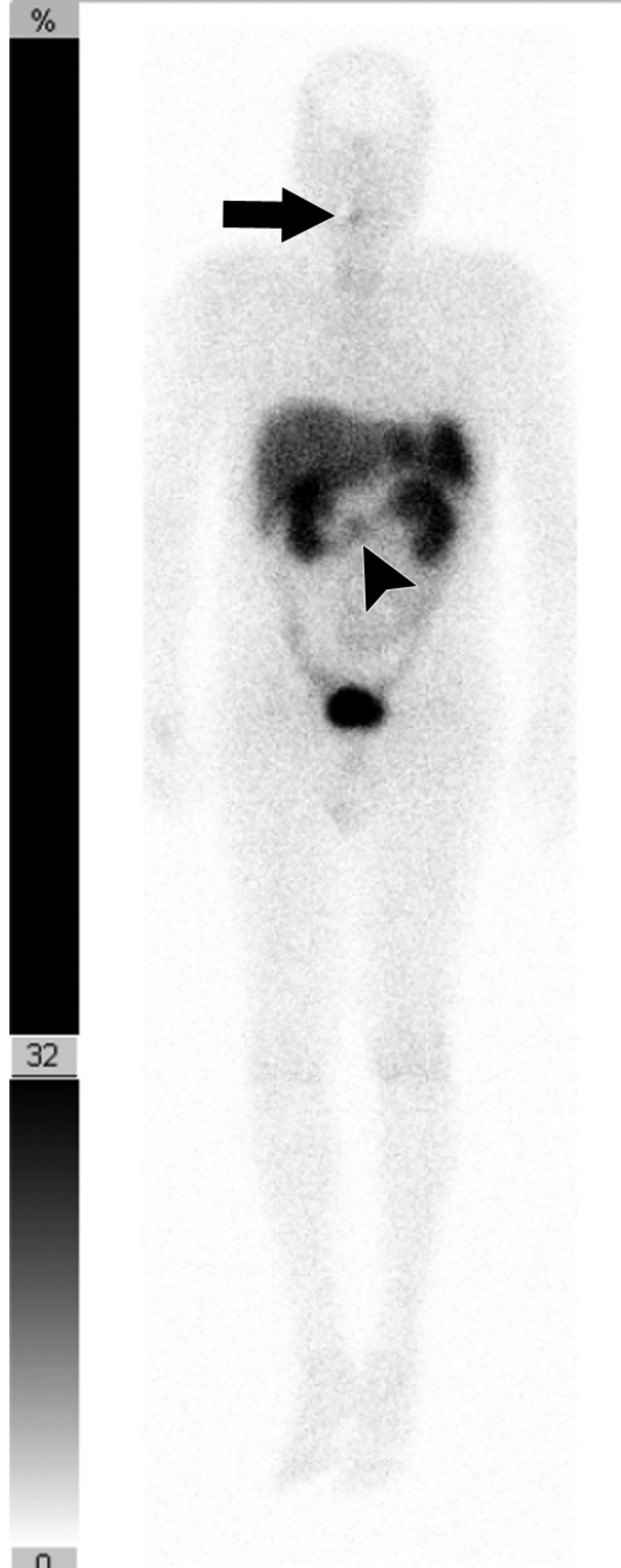
Supplemental Figure 2

Selective venous sampling was performed at multiple sites in the systemic and portal venous circulations using transjugular and transportal approaches, respectively. FGF23 levels are expressed in RU/ml, with normal levels less than 180 RU/ml.

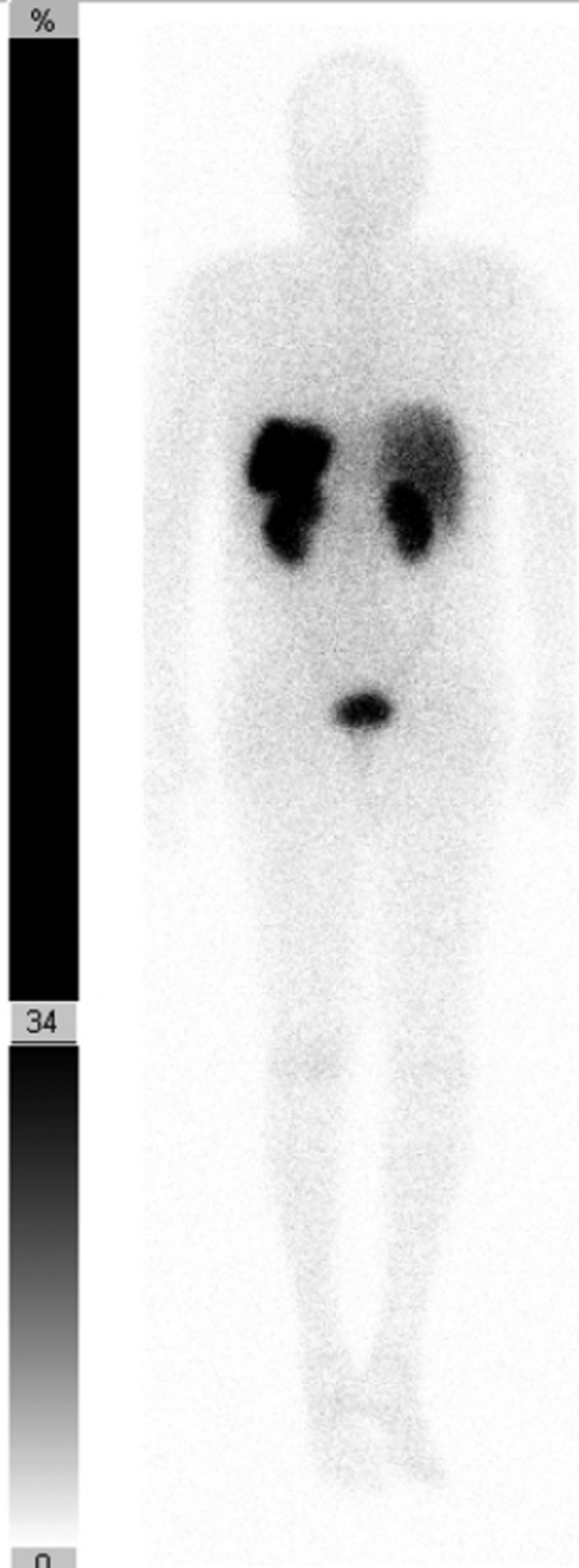


Supplemental Figure 3

Whole-body imaging following the administration of indium-111 pentetreotide shows high uptake in the lower face at the site of prior surgery (arrow) and an additional focus of uptake in the upper abdomen (arrowhead).



Anterior 665K Duration:1381 sec 256x1024
Pix:2.4mm 111-Indium



Posterior 624K Duration:1381 sec 256x1024
Pix:2.4mm 111-Indium