



STRUCTURAL BIOLOGY
COMMUNICATIONS

Volume 72 (2016)

Supporting information for article:

Crystal structure of the TK2203 protein from *Thermococcus kodakarensis*, a putative extradiol dioxygenase

Yuichi Nishitani, Jan-Robert Simons, Tamotsu Kanai, Haruyuki Atomi and Kunio Miki

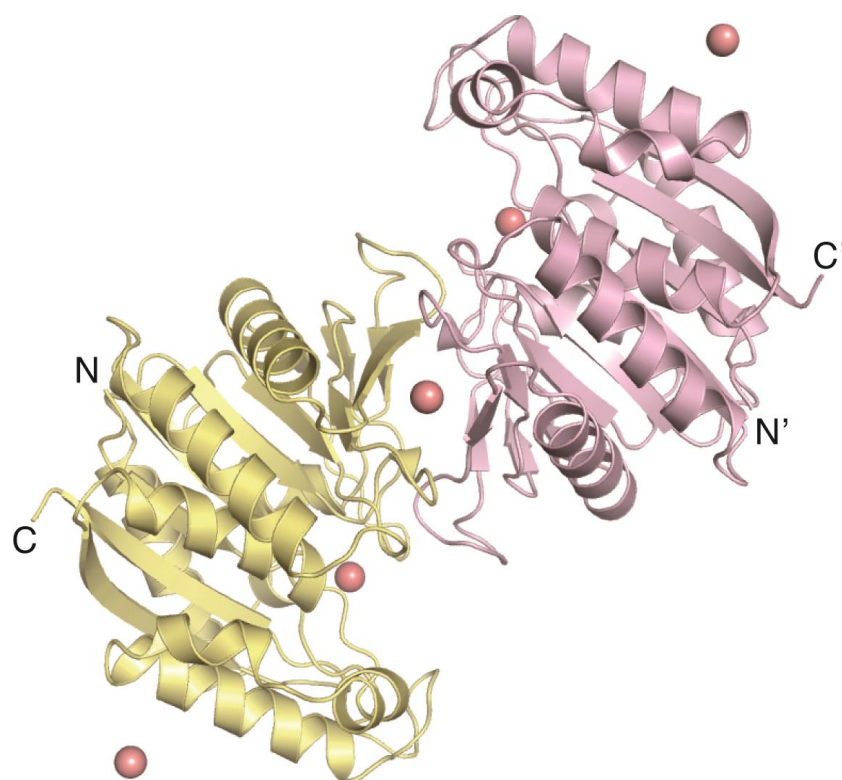


Figure S1 Zn ions in the asymmetric unit. The colours of molecules and ions are the same as Fig. 1C.

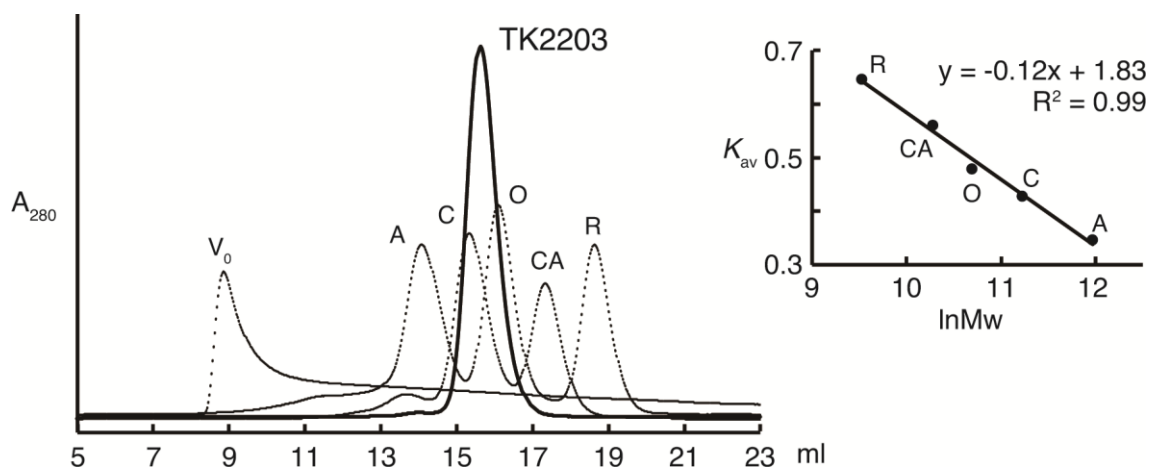


Figure S2 Elution profiles from a gel-filtration chromatography of the TK2203 protein. The molecular mass was estimated by the retention volume of the sample compared with the protein markers, aldolase (A), conalbumin (C), ovalbumin (O), carbonic anhydrase (CA), and ribonuclease A (R).