

1. RT-qPCR assays - CT values

Figure 2A - CT values (Ba/F3 cells)

	#1	#2	#3	#4	#5	#6	#7	#8
	- IL-3	+ IL-3						
	DMSO	DMSO	SFN			GMG-ITC		
	0.01%	0.01%	0.4 μM	2 μM	10 μM	0.4 μM	2 μM	10 μM
Cis	28.57	23.42	23.75	24.3	25.65	23.96	24.17	28.57
Cis	28.63	23.47	23.71	24.21	25.46	23.86	24.01	28.5
Osm	28.79	23.58	24.15	24.76	26.7	24.71	25.11	29.65
Osm	27.72	23.57	24.21	*25.14	27.52	24.37	25.31	29.94
Osm	28.05	23.71	*23.67	24.74	26.84	24.37	25.49	**
Osm	29.57	23.83	*23.61	24.44	27.48	24.4	25.23	29.76
c-Myc	25.15	22.57	23.11	23.22	24.89	22.78	23.55	25.84
c-Myc	25.2	22.49	23.08	23.39	24.63	23.01	23.27	26
c-Myc	25.61	*22.18	22.88	23.12	24.96	23.02	23.72	25.51
c-Myc	25.81	22.4	23	23.44	24.83	22.85	23.5	25.64
c-Myc	25.62	22.39	23	23.49	24.9	22.9	23.31	25.33
36b4	16.92	16.98	16.9	17	16.95	17.21	17.1	17.24
36b4	16.9	17.08	16.9	17.02	17.12	17.24	17.17	17.39
S9	17.84	17.94	18.1	*18.27	18.16	18.29	18.07	18.19
S9	18.07	18.06	18.02	18.01	18.12	18.27	18.02	17.99
S9	17.9	18.02	17.99	*18.33	18.07	18.19	18.13	18.32
S9	17.79	18.03	18.25	17.9	18.19	18.3	17.95	18.32
S9	18.02	18.03	18.07	18.1	18.16	18.24	17.93	18.19

* outlier (excluded from average calculation)

** no amplification (excluded from average calculation)

Figure 3A - CT values (HeLa cells)

	#1	#2	#3	#4	#5	#6	#7	#8
	-IFNα2a	+IFNα2a						
	DMSO	DMSO	SFN			GMG-ITC		
	0.01%	0.01%	0.4 μM	2 μM	10 μM	0.4 μM	2 μM	10 μM
G1P3	26.57	22.6	22.4	22.83	24.62	22.67	22.89	27.04
G1P3	26.41	22.81	22.29	23	24.28	22.71	22.83	26.65
ISG15	23.22	20.77	20.27	20.7	21.59	20.73	20.54	23.57
ISG15	23.09	20.72	20.33	20.79	21.69	20.69	20.63	23.79
STAT1	23.34	21.32	20.97	21.23	21.99	21.26	21.39	23.33
STAT1	23.26	21.27	20.99	21.26	22	21.06	21.33	23.45
IRF9	28.9	23.93	23.72	23.85	24.12	23.85	23.86	26.43
IRF9	29.02	23.94	23.75	23.9	24.24	23.76	23.87	26.48
c-Myc	21.86	21.57	21.24	21.36	21.4	21.48	21.28	21.93
c-Myc	21.86	21.59	21.18	21.41	21.46	21.33	21.62	21.79
S9	21.11	20.81	20.55	20.75	20.95	20.78	20.67	21.46
S9	21.19	20.83	20.61	20.85	21.08	20.84	20.81	21.18
LMNA	20.45	20.35	20.06	20.32	20.44	20.25	20.27	20.79
LMNA	20.43	20.33	20.25	20.35	20.32	20.2	20.41	20.88
LMNA	20.46	20.2	20.15	20.19	20.45	20.12	20.14	20.52
LMNA	20.55	20.24	20.19	20.2	20.34	20.27	20.25	20.51
LMNA	*21.02	20.25	19.96	20.26	20.18	20.34	20.34	20.51

* outlier (excluded from average calculation)

Figure 4 - CT values (HeLa cells)

	#1	#2	#3	#4	#5	#6	#7	#8	#9	#10
	-TNF	+TNF								
	DMSO	DMSO	SFN			GMG-ITC			Curcumin	
	0.05%	0.05%	0.4 μM	2 μM	10 μM	0.4 μM	2 μM	10 μM	10 μM	50 μM
IL-8	25.41	19.44	19.38	19.61	24.01	19.54	20.63	25.87	19.61	22.14
IL-8	24.68	19.46	19.37	19.79	24	19.5	20.57	26.26	19.57	21.94
IL-6	27.06	*22.86	*22.93	22.88	26.13	*23.27	23.94	28.4	23.07	26.15
IL-6	26.59	22.55	22.62	22.91	25.85	22.83	23.82	28.4	22.84	25.24
IL-6	26.06	22.6	22.63	22.76	26.09	22.81	23.56	27.57	23.02	25.53
S9	21.81	21.73	21.7	21.26	21.68	21.73	21.86	21.42	21.72	*21.73
S9	21.96	*22.08	21.57	*21.71	21.64	*22.22	21.89	21.64	21.62	22.01
S9	21.96	21.59	21.52	21.2	21.7	21.72	21.72	21.52	21.57	*21.62
S9	21.77	21.65	21.76	21.29	*21.41	21.65	21.85	21.53	21.64	21.8

* outlier (excluded from average calculation)

2. WST-1 assays - OD 450/620nm

Figure 2C - Ba/F3 cells

	Triton-X100	DMSO 0.1%	SFN				GMG-ITC			
			0.1 μ M	1 μ M	10 μ M	100 μ M	0.02 μ M	0.2 μ M	2 μ M	20 μ M
450-620	0.058	1.698	1.403	1.864	1.387	0.839	1.848	1.824	1.491	0.756
	0.061	2.022	1.828	1.761	1.387	0.802	1.897	1.805	1.318	0.752
	0.073	1.65	1.886	1.759	1.378	0.804	1.895	1.762	1.521	0.737
Average	0.064	1.790	1.706	1.795	1.384	0.815	1.880	1.797	1.443	0.748
StDev	0.008	0.202	0.264	0.060	0.005	0.021	0.028	0.032	0.110	0.010

Figure 3B - HeLa cells

	Triton-X100	DMSO 0.1%	SFN				GMG-ITC			
			0.1 μ M	1 μ M	10 μ M	100 μ M	0.02 μ M	0.2 μ M	2 μ M	20 μ M
450-620	0.18	1.454	1.449	1.492	1.24	0.729	1.434	1.495	1.205	0.627
	0.189	1.475	1.531	1.489	1.166	0.683	1.556	1.429	1.113	0.709
	0.182	1.501	1.566	1.426	1.23	0.719	1.536	1.462	1.188	0.602
Average	0.184	1.477	1.515	1.469	1.212	0.710	1.509	1.462	1.169	0.646
StDev	0.005	0.024	0.060	0.037	0.040	0.024	0.065	0.033	0.049	0.056

Figure 2D (Michl et al.) – uncropped Western blots

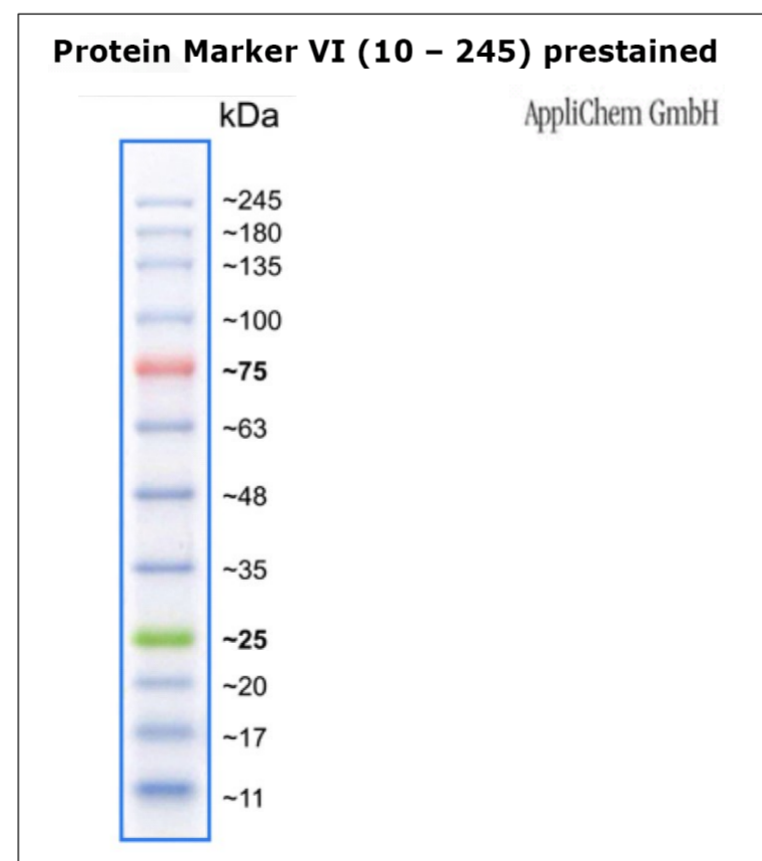
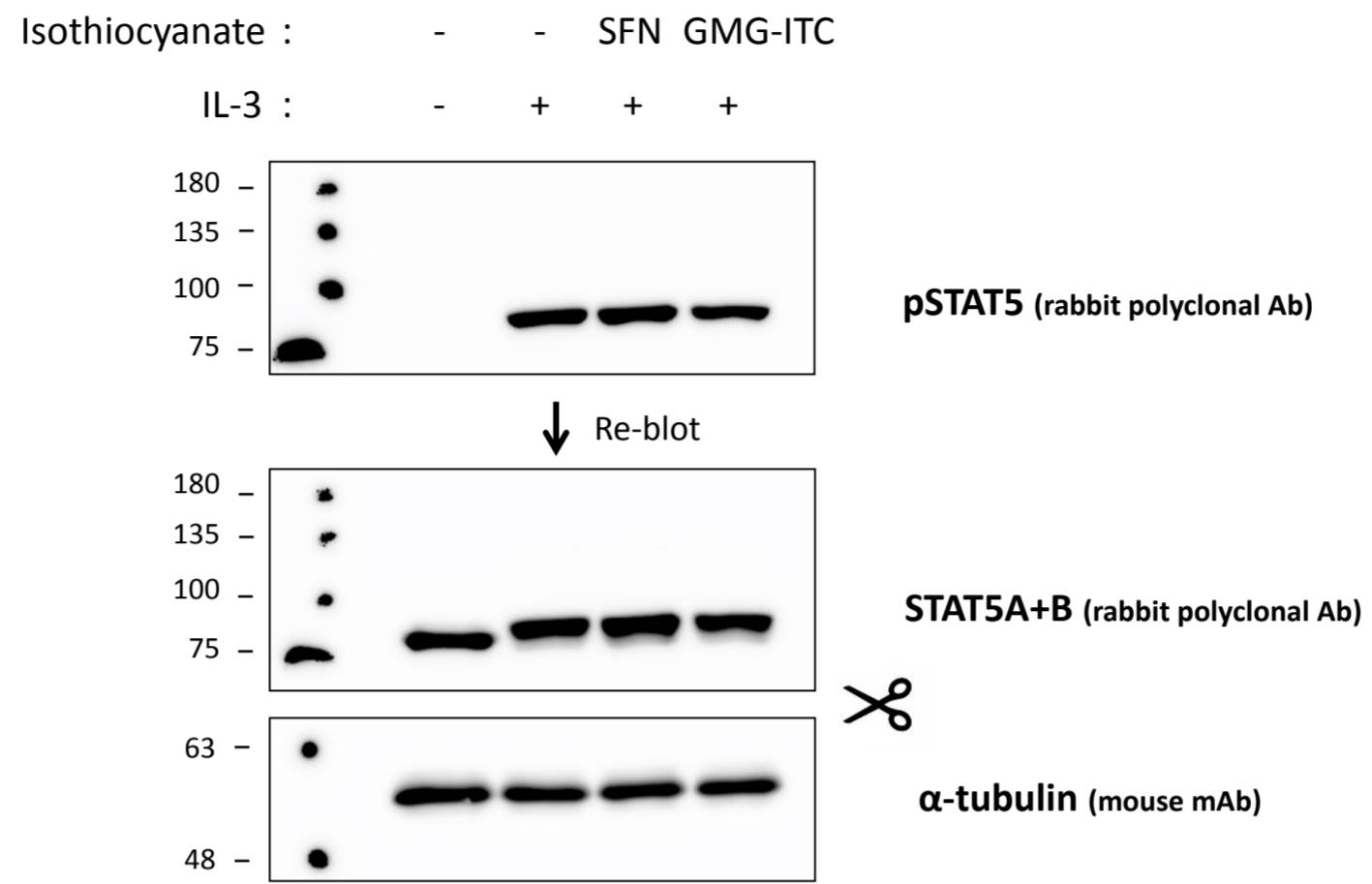


Figure 3C (Michl et al.) – uncropped Western blots

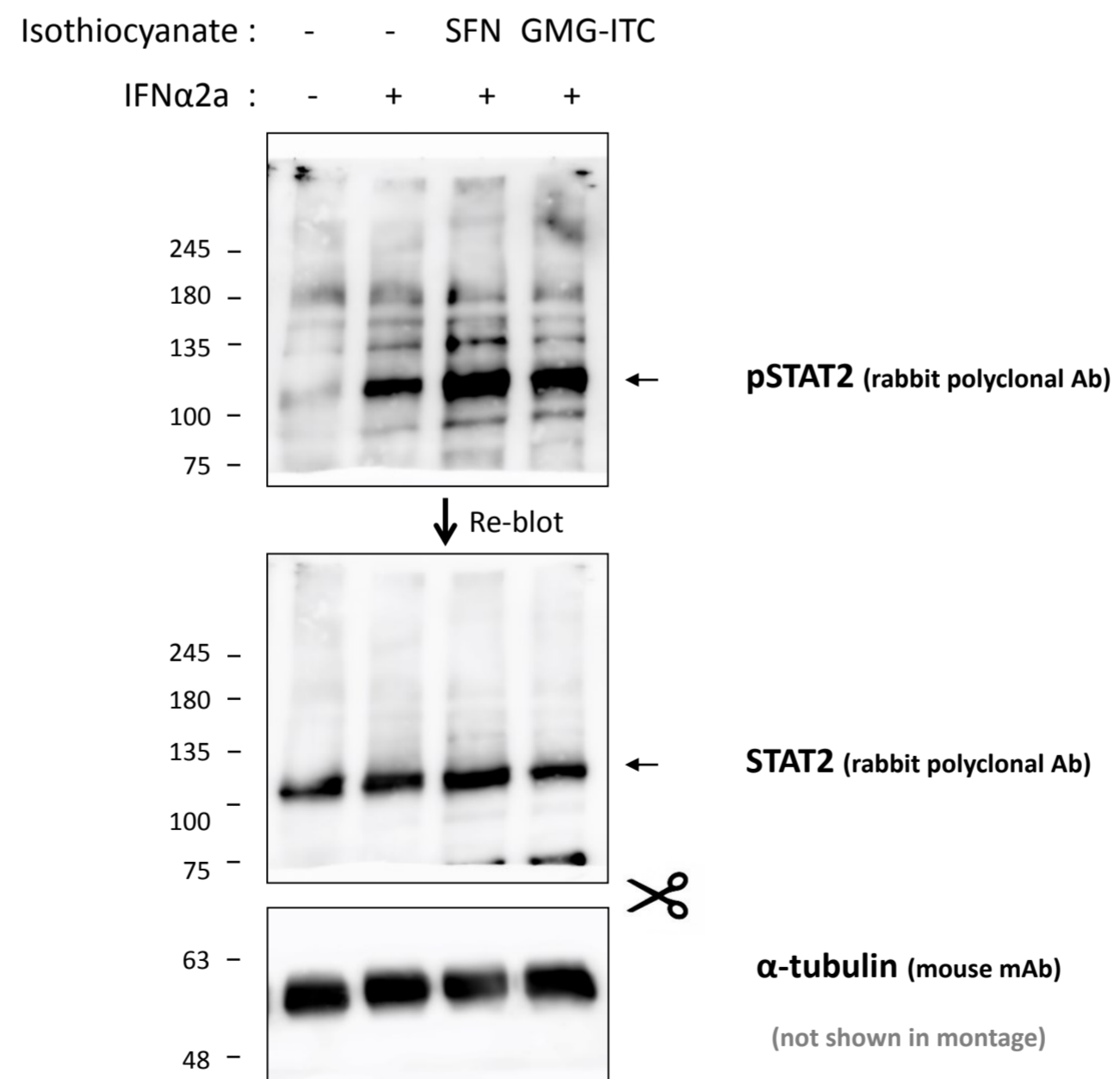
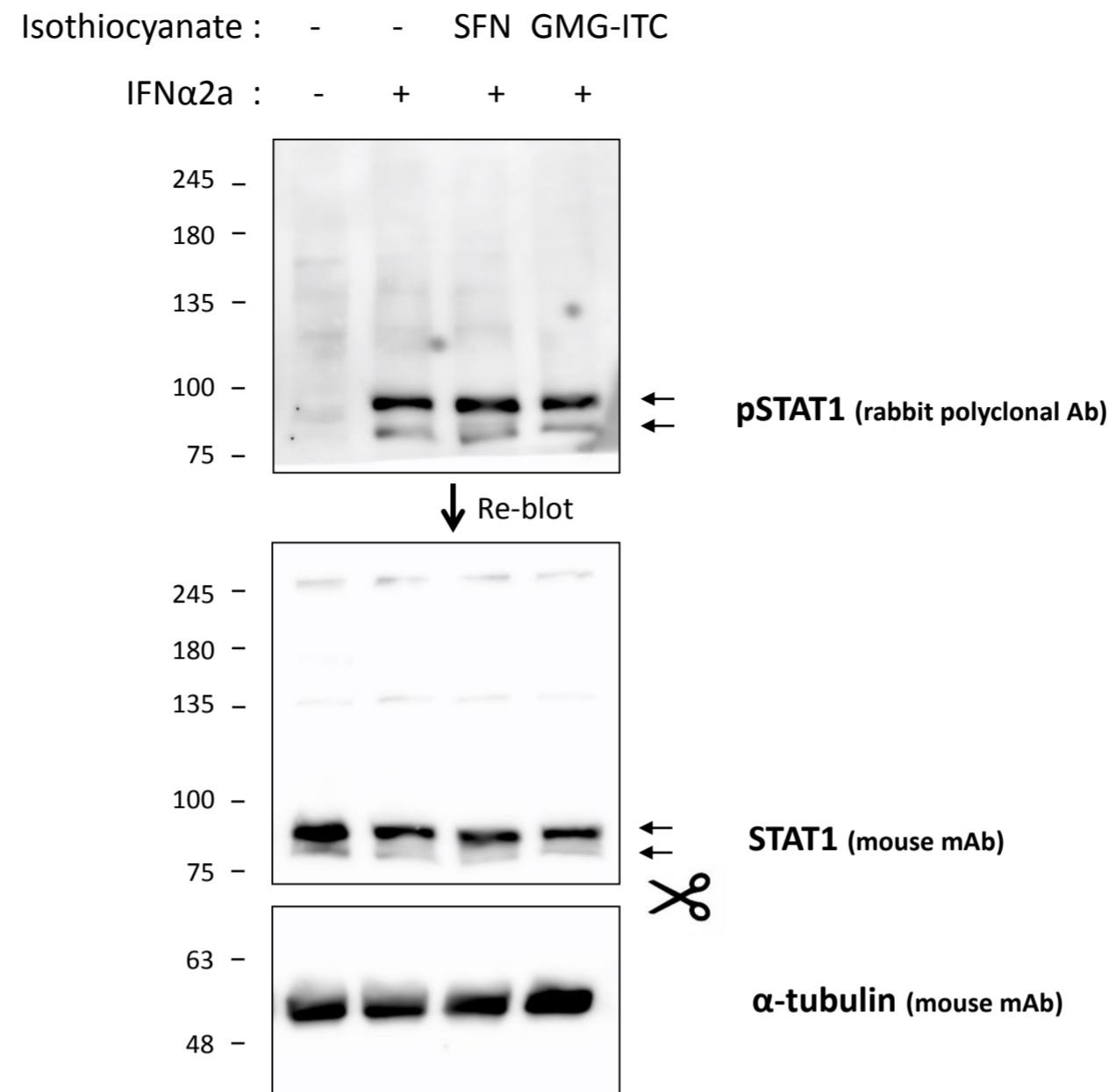


Figure 5C (Michl et al.) – uncropped Western blots

