

Stem Cell Reports, Volume 6

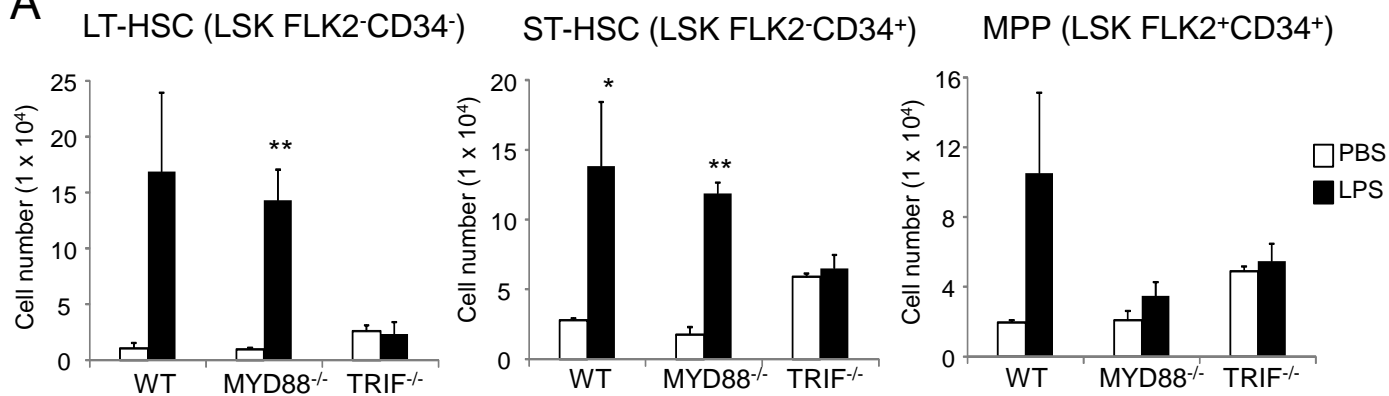
Supplemental Information

Sepsis Induces Hematopoietic Stem Cell Exhaustion and Myelosuppression through Distinct Contributions of TRIF and MYD88

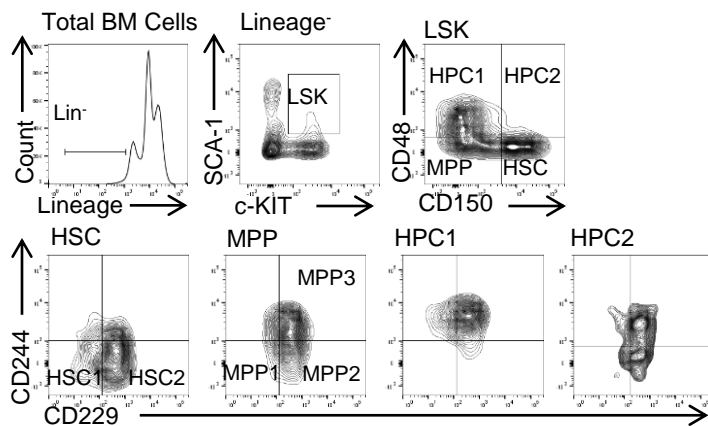
Huajia Zhang, Sonia Rodriguez, Lin Wang, Soujuan Wang, Henrique Serezani, Reuben Kapur, Angelo A. Cardoso, and Nadia Carlesso

Figure S1

A



B



C

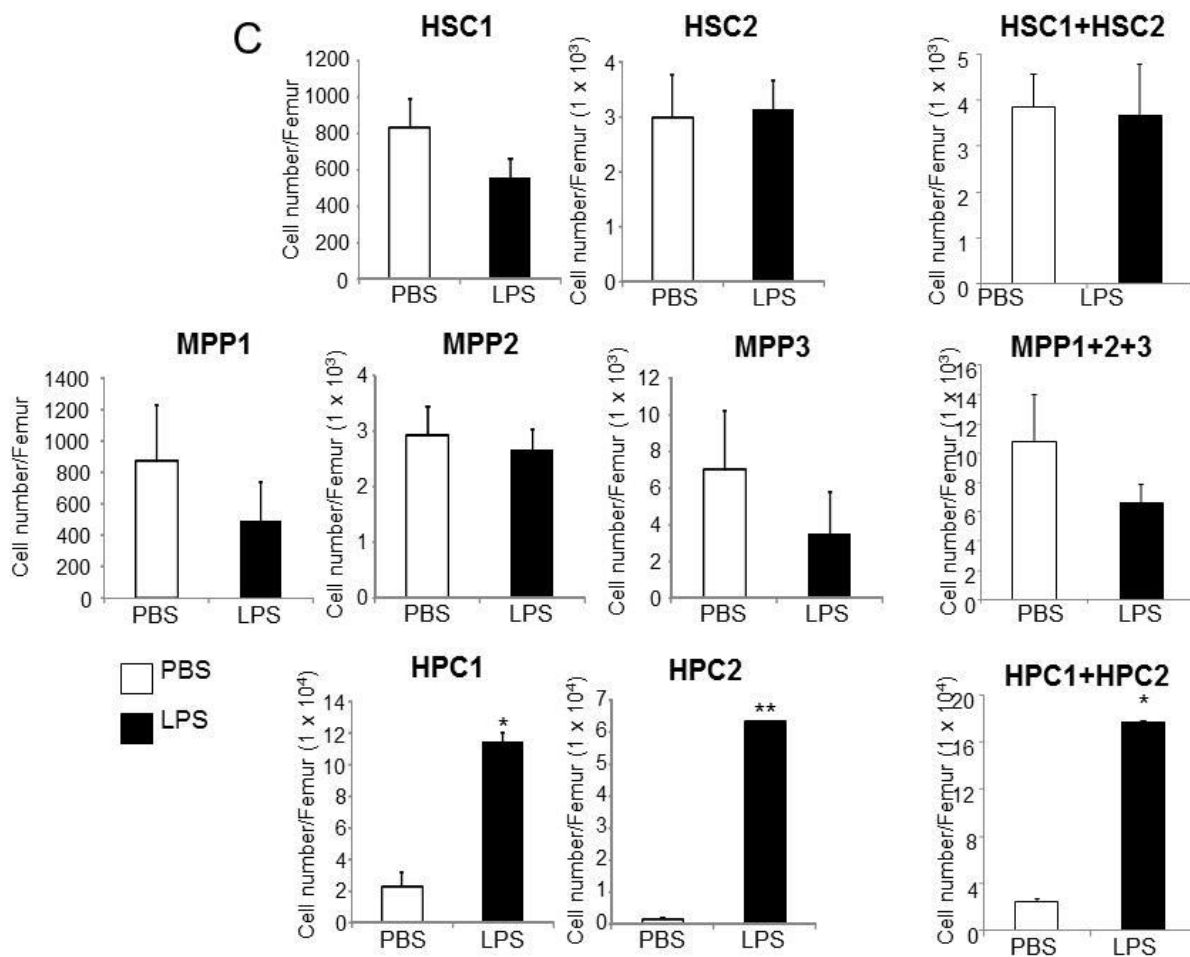


Figure S2

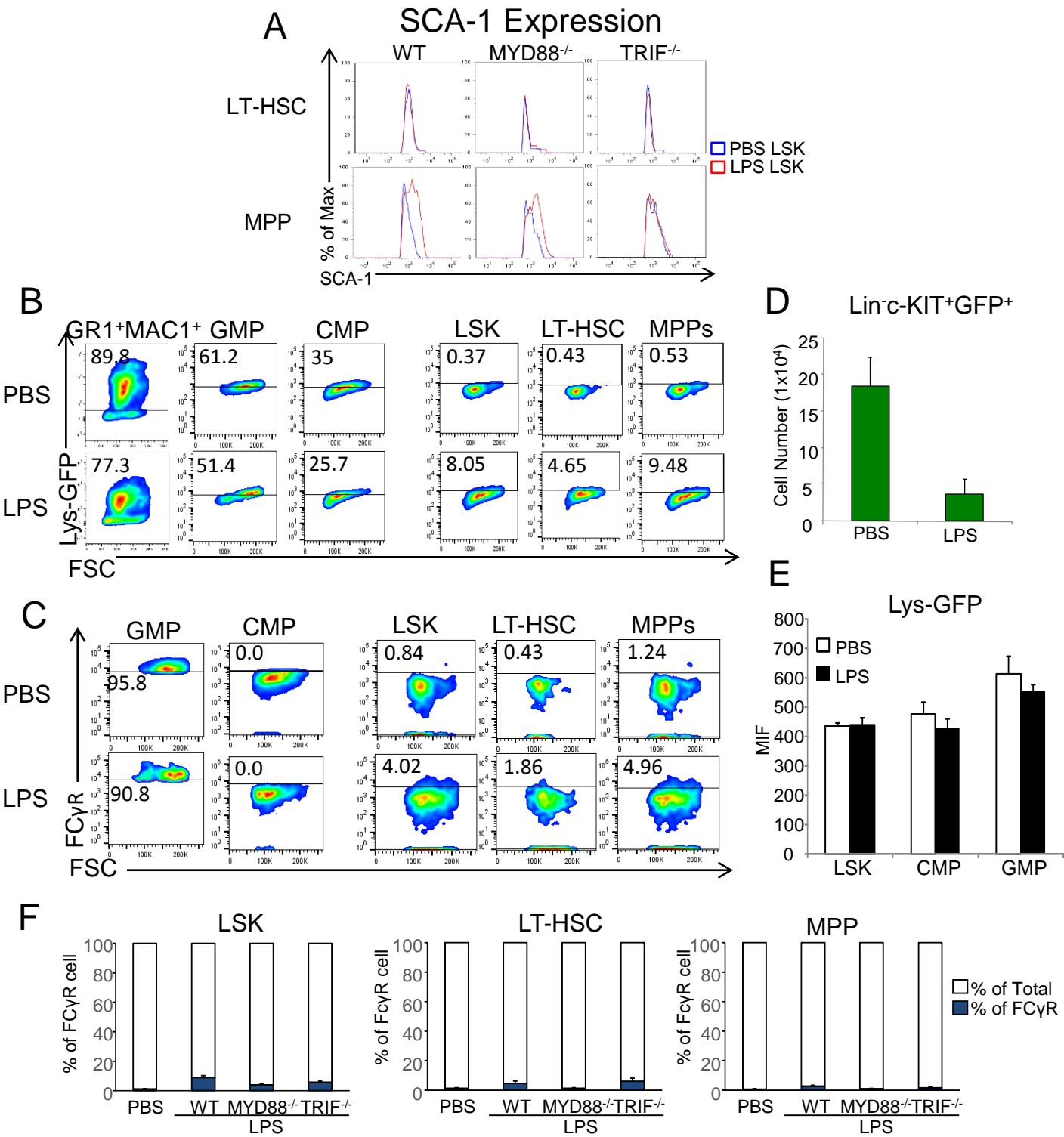


Figure S3

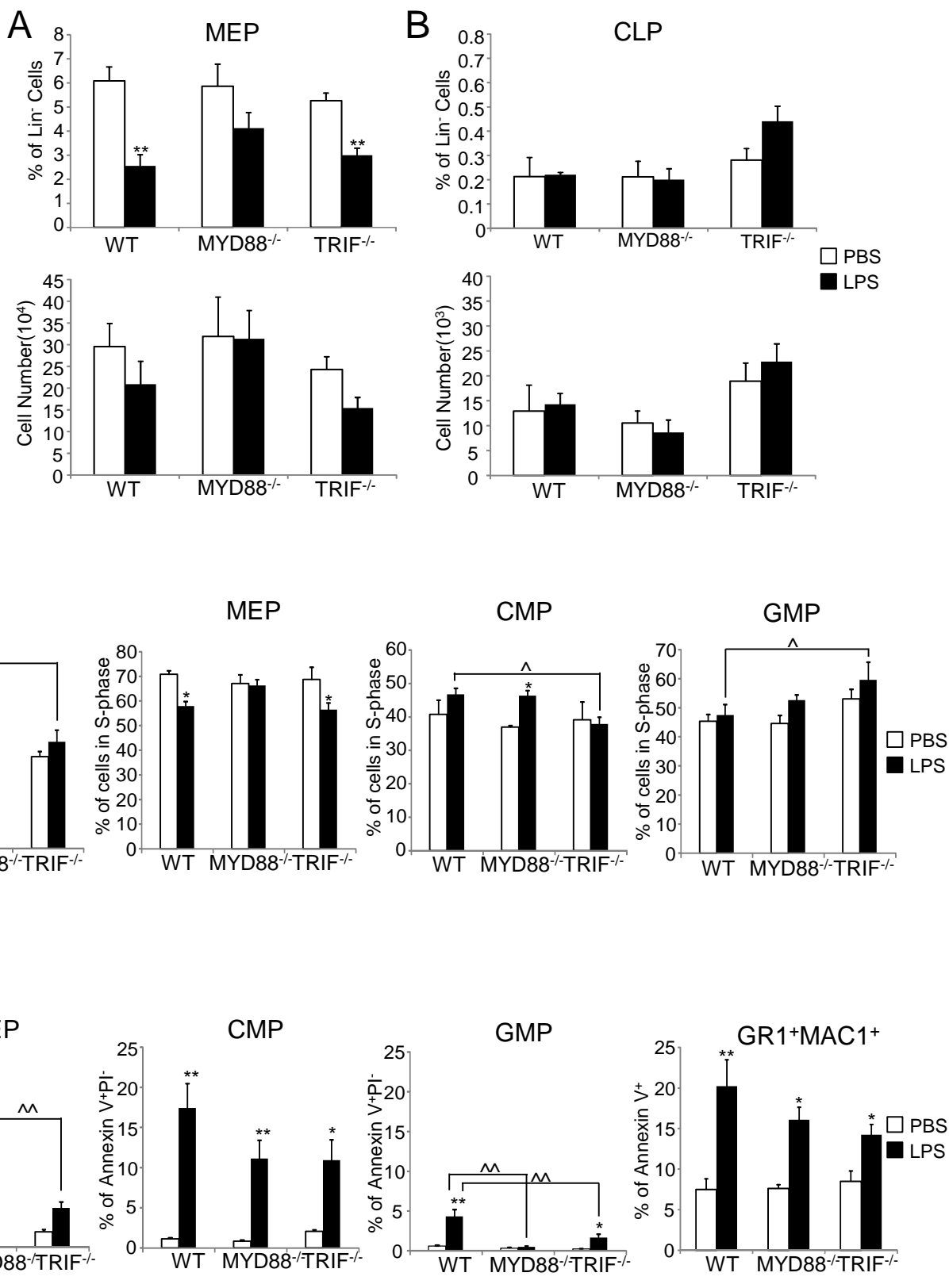


Figure S4

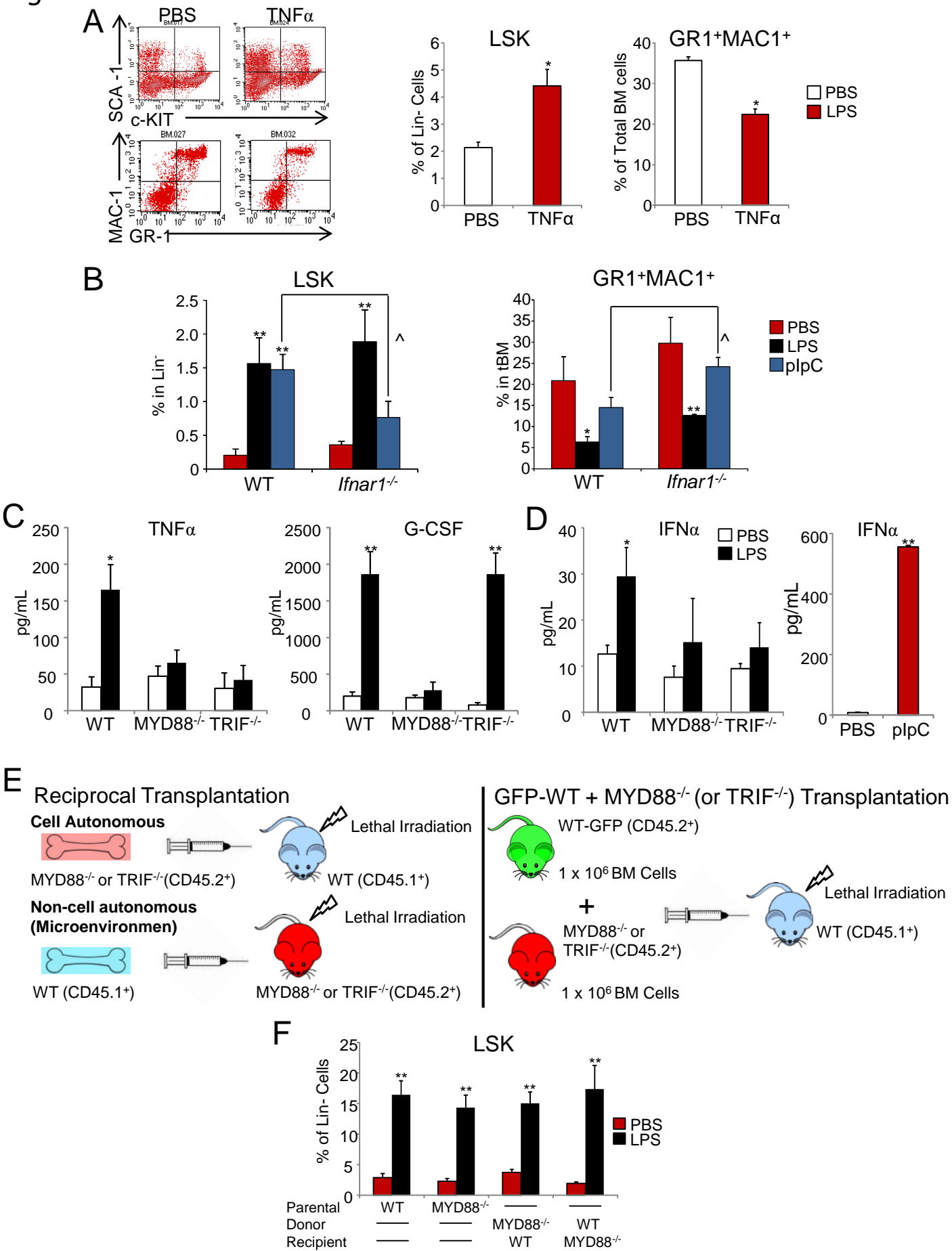
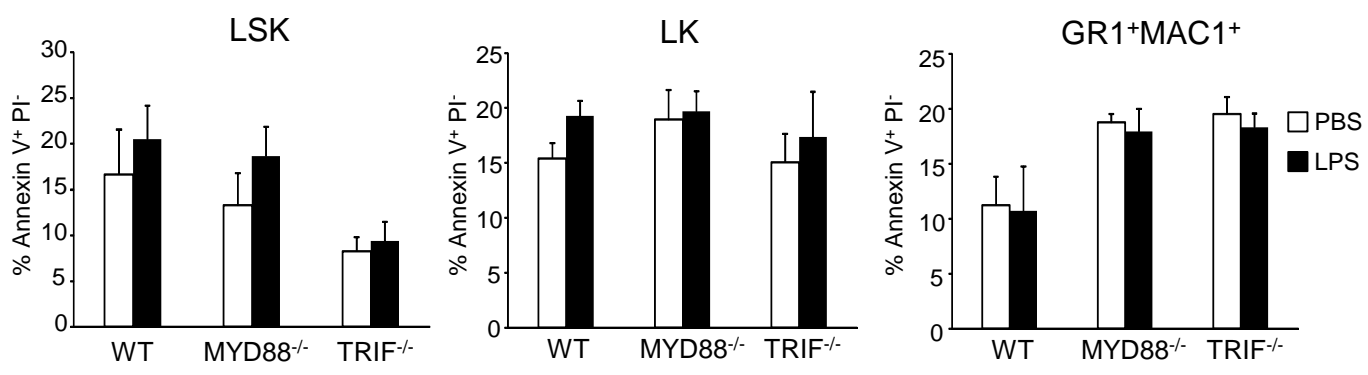


Figure S5

A



B

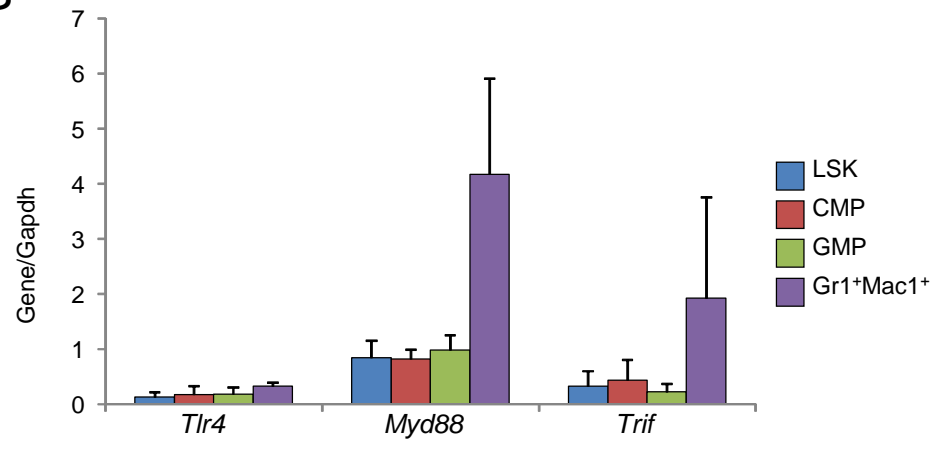
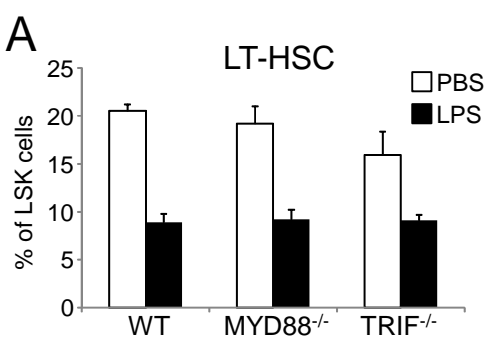
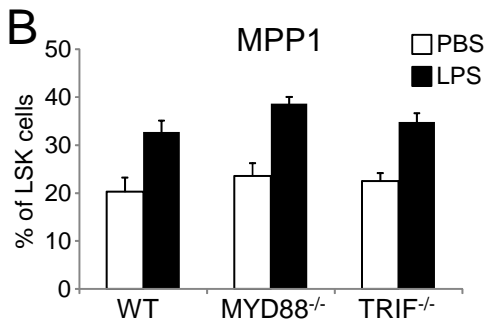


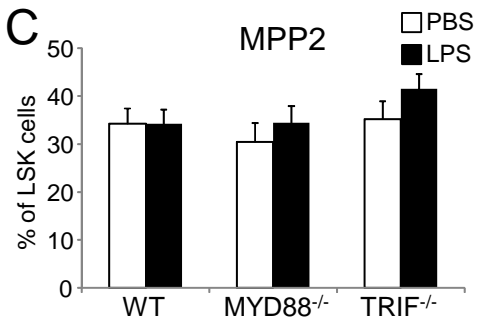
Figure S6



| | % of LT-HSC in LSK cells | | | | Cell/2500 LSK | | LT-HSC adjusted | |
|----------------------|--------------------------|-------|------|-------|---------------|-----|-----------------|---------|
| | PBS | SEM | LPS | SEM | PBS | LPS | PBS | LPS |
| WT | 20.5 | ±0.66 | 8.87 | ±0.91 | 512 | 211 | 512 | 200.872 |
| MYD88 ^{-/-} | 19.1 | ±1.79 | 9.19 | ±0.97 | 478 | 229 | 467.484 | 225.794 |
| TRIF ^{-/-} | 15.9 | ±2.46 | 9.09 | ±0.57 | 397 | 227 | 392.236 | 211.564 |



| | % of MPP1 in LSK cells | | | | Cells/2500 cells | | MPP1 adjusted | |
|----------------------|------------------------|-------|------|-------|------------------|-----|---------------|---------|
| | PBS | SEM | LPS | SEM | PBS | LPS | PBS | LPS |
| WT | 20.2 | ±2.97 | 32.7 | ±2.42 | 505 | 817 | 498.94 | 794.941 |
| MYD88 ^{-/-} | 23.6 | ±2.62 | 38.6 | ±1.43 | 590 | 965 | 587.64 | 955.35 |
| TRIF ^{-/-} | 22.6 | ±1.86 | 34.7 | ±1.84 | 565 | 867 | 559.915 | 852.261 |



| | % of MPP2 in LSK cells | | | | Cells/2500 cells | | MPP2 adjusted | |
|----------------------|------------------------|-------|------|-------|------------------|------|---------------|----------|
| | PBS | SEM | LPS | SEM | PBS | LPS | PBS | LPS |
| WT | 34.2 | ±3.17 | 34.2 | ±2.9 | 856 | 855 | 845.728 | 831.915 |
| MYD88 ^{-/-} | 30.4 | ±3.98 | 34.4 | ±3.49 | 761 | 861 | 757.956 | 852.39 |
| TRIF ^{-/-} | 33 | ±3.33 | 41.5 | ±3.10 | 826 | 1038 | 818.566 | 1020.354 |

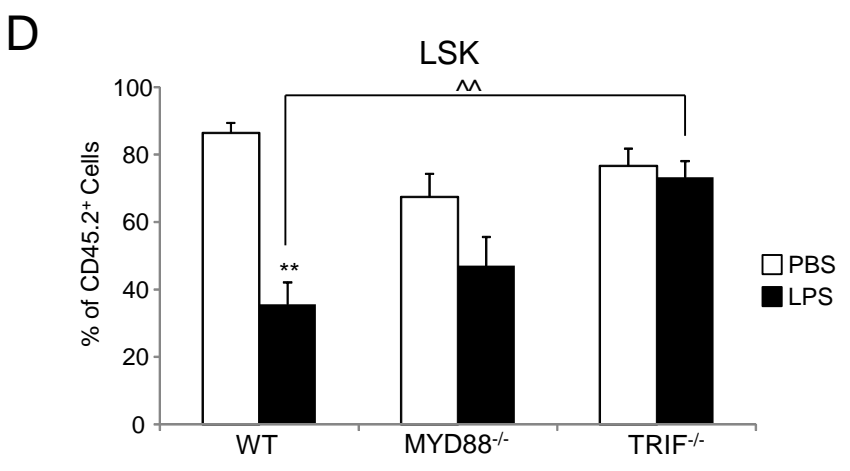


Figure S7

