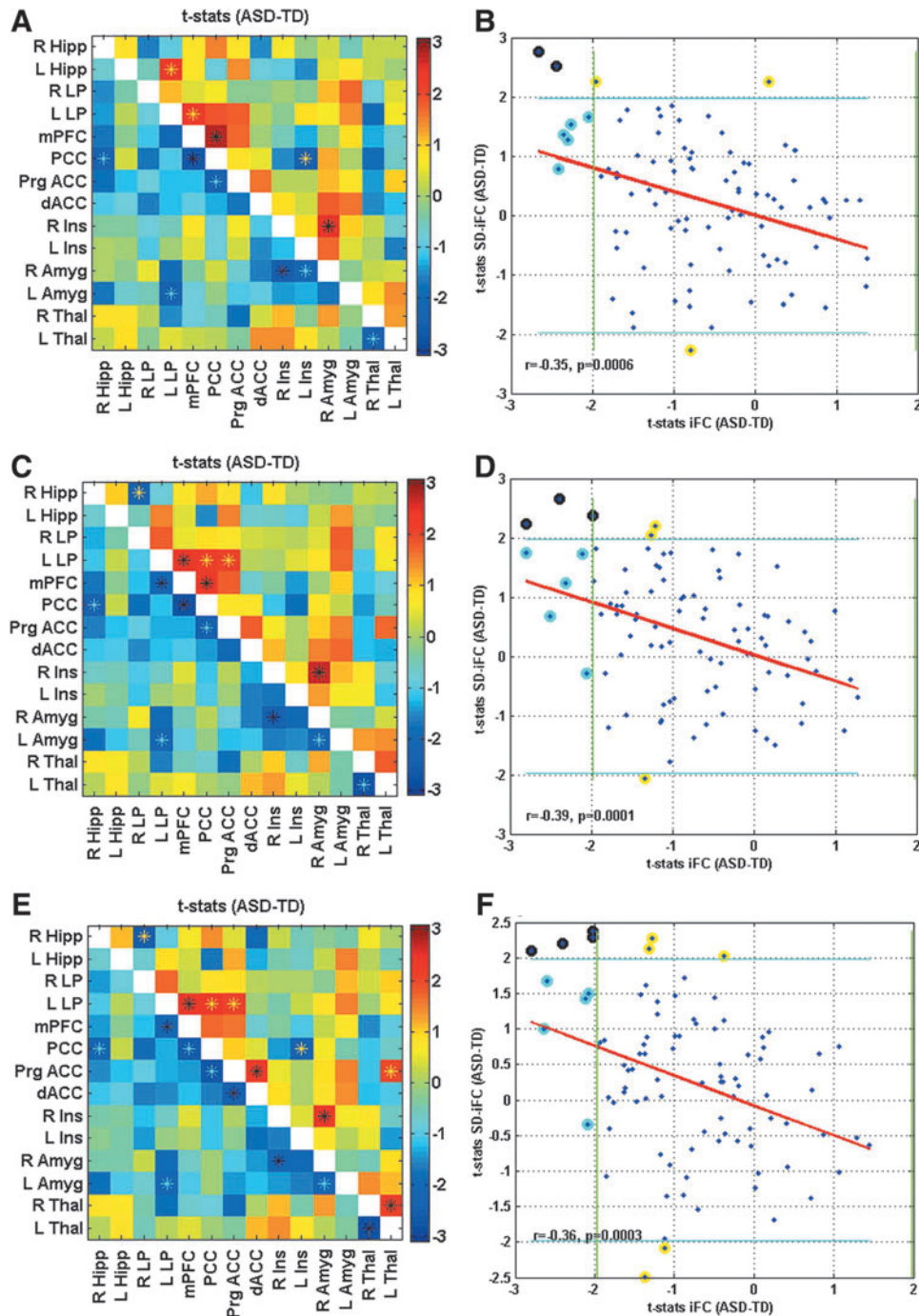


## Supplementary Data



**SUPPLEMENTARY FIG. S1.** Connectivity matrix for Study 1, using window lengths of 40 sec (A, B), 50 sec (C, D), and 60 sec (E, F). Left column:  $t$ -statistics for iFC in lower triangle in ( $p < 0.05$ , uncorrected, denoted by cyan asterisks), and for SD-iFC in upper triangle ( $p < 0.05$ , uncorrected, denoted by yellow asterisks). Black asterisks indicate ROI pairs that exhibited significant differences in both iFC and SD-iFC. Right column: Scatterplots showing relation between the computed  $t$ -statistics (for iFC and SD-iFC) across all ROI pairs in the matrices above. The  $x$ -axis corresponds to the  $t$ -statistics for iFC shown in the lower triangle of each row, while the  $y$ -axis corresponds to the  $t$ -statistics for SD-iFC shown in the upper triangle. Green vertical line and blue horizontal lines show the threshold for significance. Cyan circled points show ROI pairs with a significant difference only in iFC, yellow circled points indicate a significant difference only in SD-iFC (indicated by asterisks), and black circled points are ROI pairs that exhibited significant differences in both iFC and SD-iFC [indicated by black asterisks in (A)]. iFC, intrinsic functional connectivity; ROIs, regions of interest.