

Increased Cumulative Incidence of Dermatomyositis in Ulcerative Colitis: a

Nationwide Cohort Study

Chia-Chun Tseng^{1,2}, Shun-Jen Chang^{3,*}, Wei-Ting Liao⁴, Ya-Ting Chan³, Wen-Chan Tsai⁵, Tsan-Teng Ou⁵, Cheng-Chin Wu⁵, Wan-Yu Sung^{5,6}, Ming-Chia Hsieh^{7,8},
Jeng-Hsien Yen^{5,6,9,*}

¹Graduate Institute of Clinical Medicine, College of Medicine, Kaohsiung Medical University, Kaohsiung, Taiwan

²Department of Internal Medicine, Kaohsiung Municipal Ta-Tung Hospital, Kaohsiung, Taiwan

³Department of Kinesiology, Health and Leisure Studies, National University of Kaohsiung, Kaohsiung, Taiwan

⁴Department of Biotechnology, College of Life Science, Kaohsiung Medical University, Kaohsiung, Taiwan

⁵Division of Rheumatology, Department of Internal Medicine, Kaohsiung Medical University Hospital, Kaohsiung, Taiwan

⁶Graduate Institute of Medicine, College of Medicine, Kaohsiung Medical University, Kaohsiung, Taiwan

⁷Division of Endocrinology and Metabolism, Department of Internal Medicine, Changhua Christian Hospital, Changhua, Taiwan

⁸Graduate Institute of Integrated Medicine, China Medical University, Taichung,

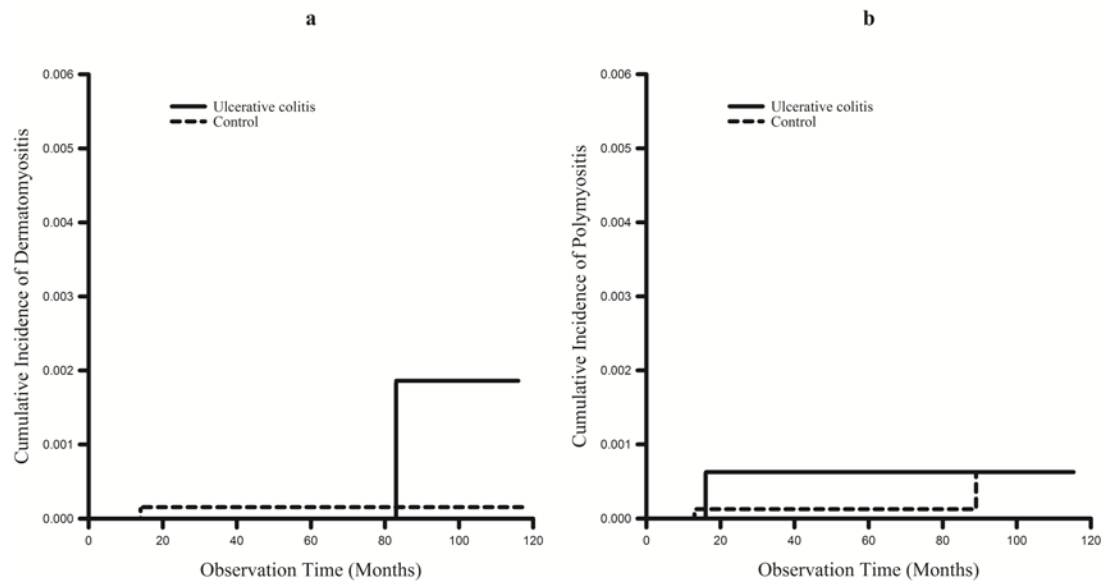
Taiwan

⁹Institute of Biomedical Sciences, National Sun Yat-sen University, Kaohsiung,

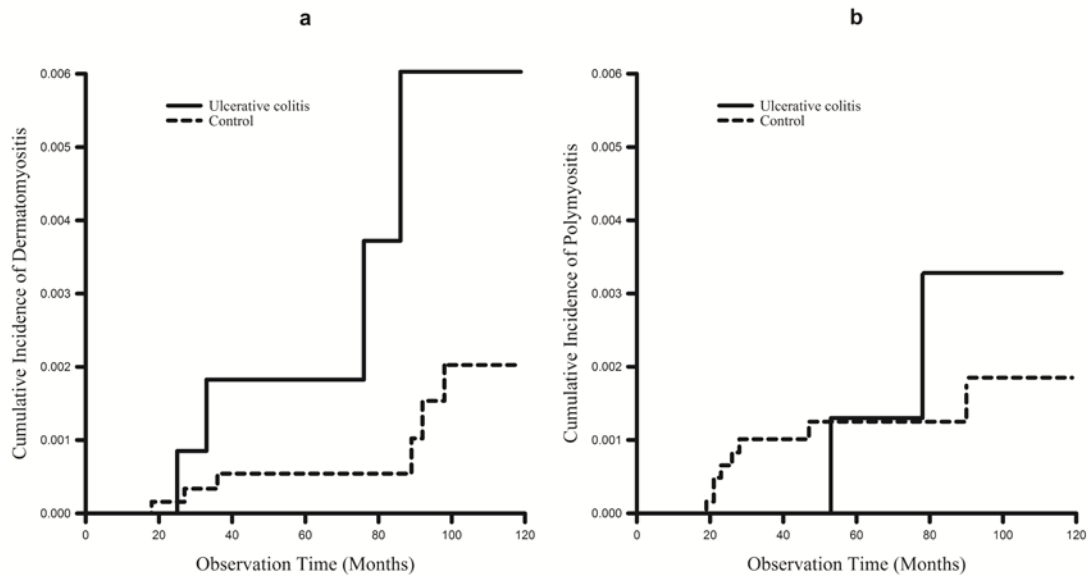
Taiwan

*Correspondence and requests for materials should be addressed to S.-J.C. (email:

changsj1104@gmail.com) or J.-H.Y. (email: jehsye@kmu.edu.tw).



Supplementary Figure 1. Cumulative incidence of DM and PM in men. **(a)**The cumulative incidence of DM in men was higher in UC patients than in control subjects, but the difference was not statistically significant ($p=0.245$, estimated by the log-rank test). **(b)**The cumulative incidence of PM in men was comparable between UC patients and control subjects ($p=0.484$, estimated by the log-rank test).



Supplementary Figure 2. Cumulative incidence of DM and PM in women. **(a)** The cumulative incidence of DM in women was higher in UC patients than in control subjects ($p=0.044$, estimated by the log-rank test). **(b)** The cumulative incidence of PM in women was comparable between UC patients and control subjects ($p=0.784$, estimated by the log-rank test).