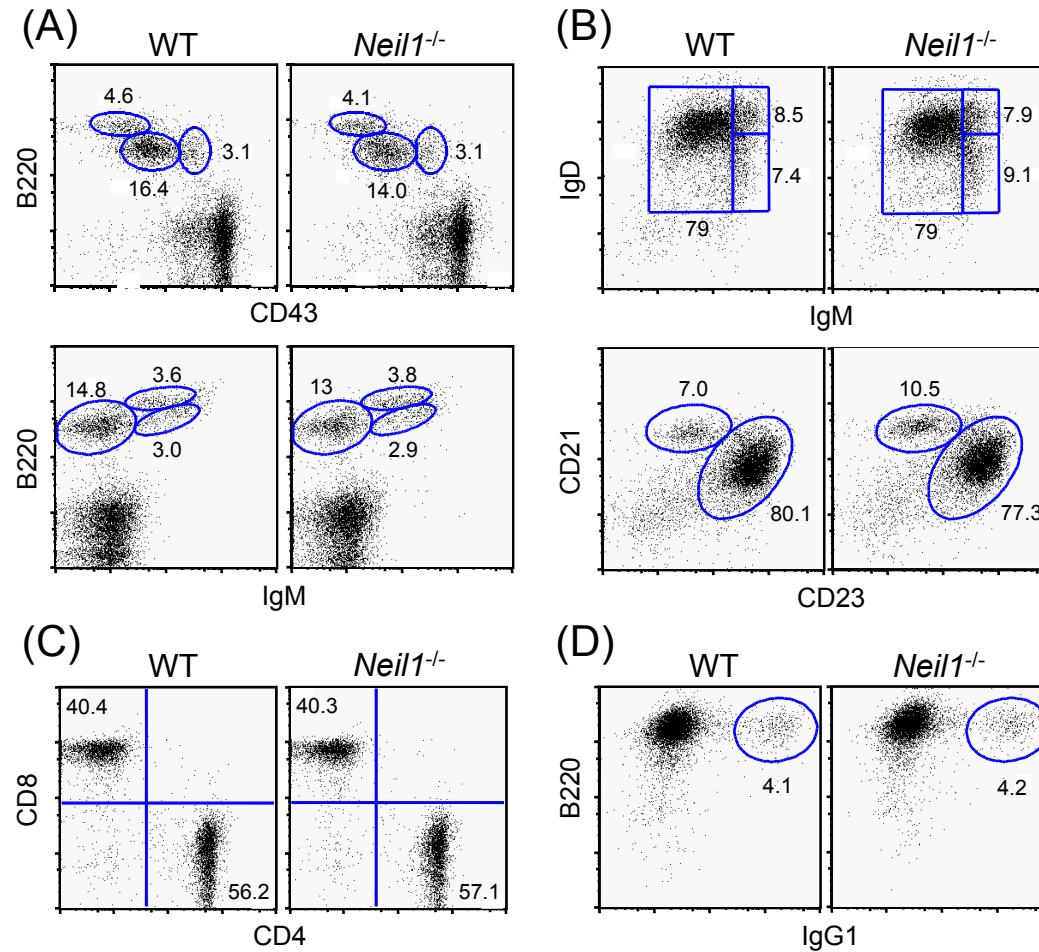


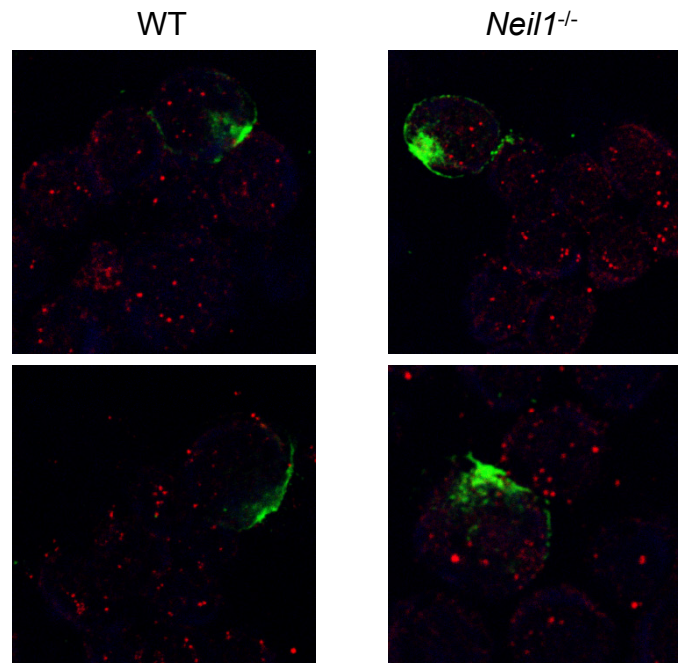
Supplemental Fig. S1.

B and T cell development and maturation in WT and *Neil1*^{-/-} mice. (A) FACS profiles of bone marrow cells. (B) FACS profiles of B220⁺ cells in the spleen. (C) FACS profiles of TCRβ⁺ cells in the spleen. (D) Class switch recombination. Spleen B cells were stimulated with 10 μg/ml of LPS plus 10 ng/ml of interleukin-4 and analyzed for IgG1 expression 3 days later by FACS. Representative results of three pairs of WT and *Neil1*^{-/-} mice are shown.



Supplemental Fig. S2.

Accumulation of Tg lesions in WT and *Neil1*^{-/-} B cells after immunization with the T-dependent antigen NP-CGG. WT and *Neil1*^{-/-} mice were immunized with NP-CGG. Two weeks later, spleen B cells were purified and stained for Tg and GL7 as described in Materials and methods. GL7 was used to mark GC B cells. Representative images of WT (left 2 panels) and *Neil1*^{-/-} (right 2 panels) B cells are shown.



Supplemental Fig. S3.

Mutation patterns in Ig genes (J_H4 intronic region) of WT and *Neil1*^{-/-} mice.

WT

		To	A	C	G	T	%
From	A	*	6.08	14.9	9.87	30.9	
	C	6.01	*	6.01	12.4	24.4	
	G	14.6	6.89	*	3.64	25.1	
	T	5.08	9.65	4.90	*	19.6	

Neil1^{-/-}

		To	A	C	G	T	%
From	A	*	4.19	18.1	8.03	30.3	
	C	3.82	*	6.08	12.2	22.1	
	G	14.5	9.06	*	5.71	29.3	
	T	5.85	10.1	2.37	*	18.3	