

Fibroblasts of Machado Joseph Disease patients reveal autophagy impairment

Isabel Onofre^{1,2¶}, Nuno Mendonça^{1,3,4¶}, Sara Lopes^{1,5}, Rui Nobre^{1,5}, Joana Barbosa de Melo^{1,4,6}, Isabel Marques Carreira^{1,4,6}, Cristina Januário^{3,4}, António Freire Gonçalves^{3,4} and Luis Pereira de Almeida^{1,2}

1- CNC - Center for Neuroscience and Cell Biology, Coimbra, Portugal

2- Faculty of Pharmacy, University of Coimbra, Coimbra, Portugal

3- Neurology Department, Coimbra University Hospital Center, Coimbra, Portugal

4- Faculty of Medicine, University of Coimbra, Portugal

5- IIIUC- Institute for Interdisciplinary Research, University of Coimbra, Coimbra, Portugal

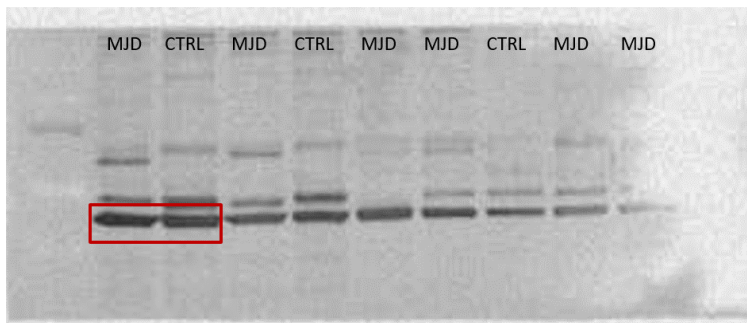
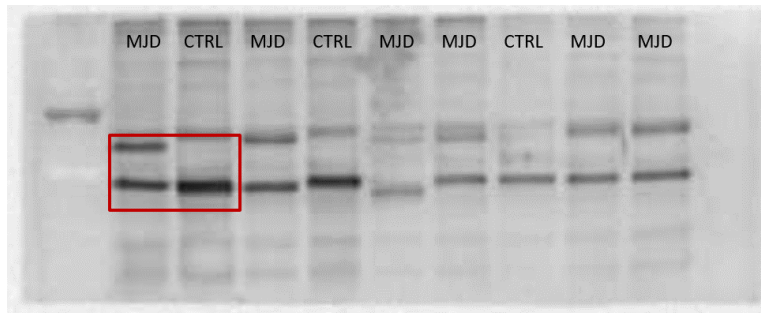
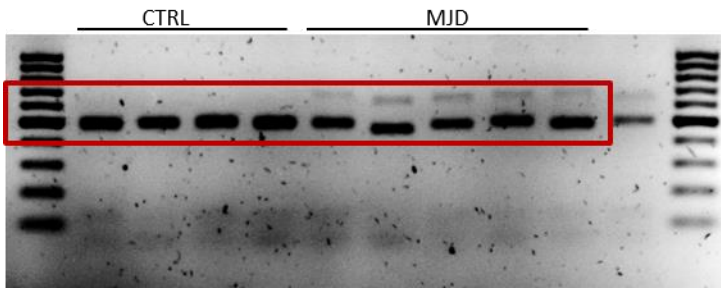
6- *Cytogenetics and Genomics Laboratory, Faculty of Medicine, University of Coimbra, Coimbra, Portugal*

¶ - Equal contribution

Corresponding author:

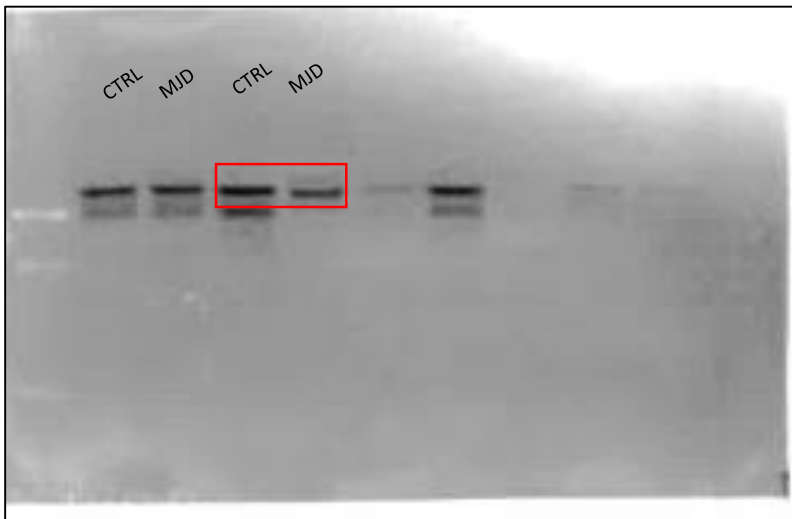
Luis Pereira de Almeida (luispa@cnc.uc.pt)

Supplemental Information

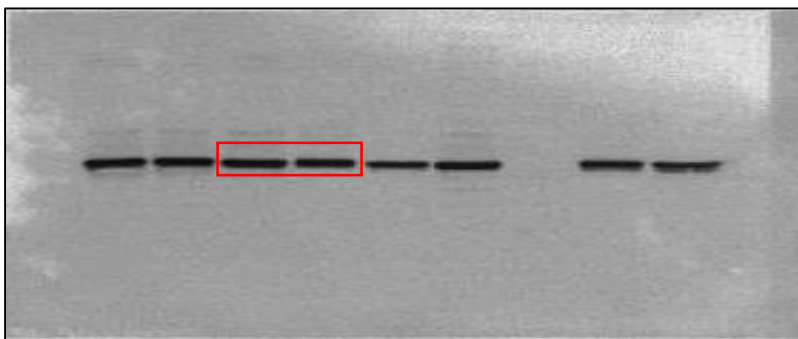


S1- Full length agarose gel relative to Fig 3C and full length western blot membrane relative to Fig 3D. Red boxes indicate the cropping lines used to generate the figures.

Supplemental Information



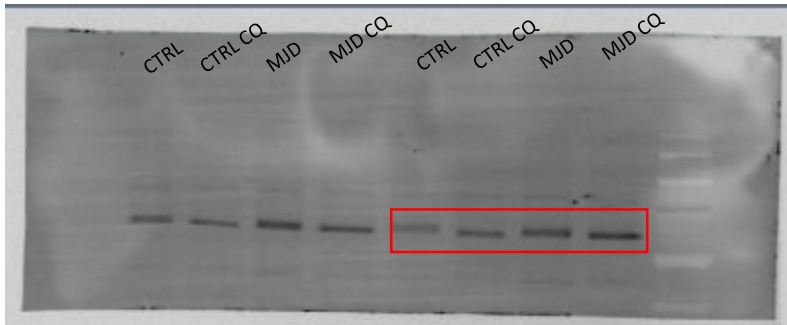
Western blot
membrane
Beclin-1



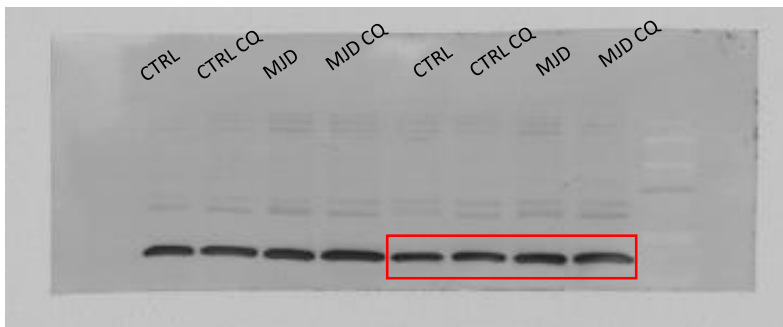
Western blot
membrane
Actin/Beclin-1

S2- Full length western blot membranes relative to Fig 4A. Red boxes indicate the cropping lines used to generate the figures.

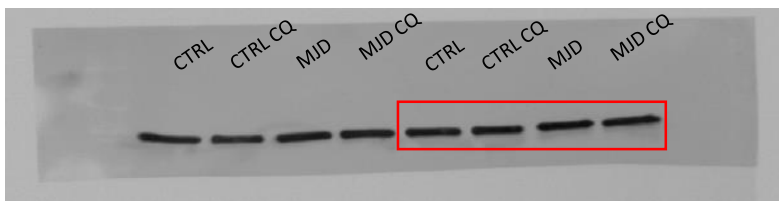
Supplemental Information- Figure 4



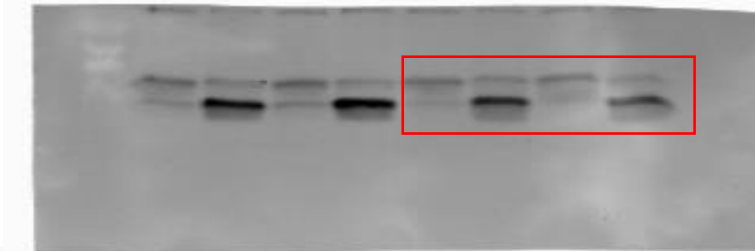
Western blot
membrane
p62



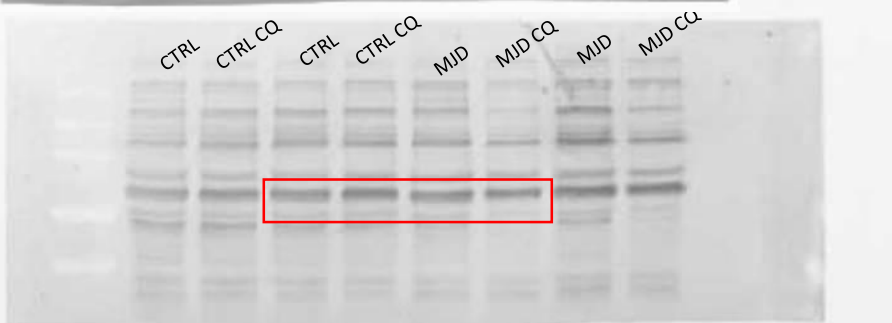
Western blot
membrane
Actin/p62



Western blot
membrane
Actin/LC3

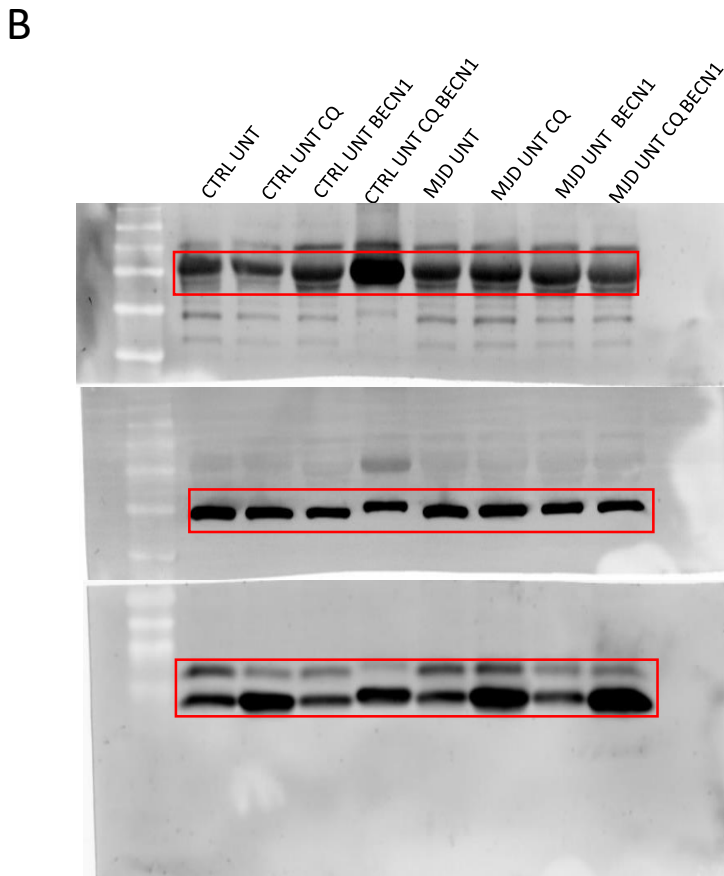
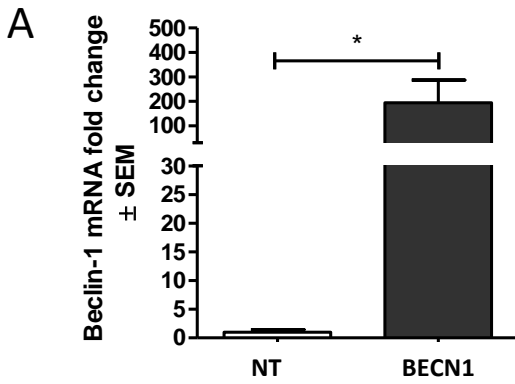


Western blot
membrane
LC3



Western blot
membrane
Beclin-1

S2- Full length western blot membranes relative to Fig 4D. Red boxes indicate the cropping lines used to generate the figures.



S3- A- Quantification of Beclin-1 mRNA levels on transduced fibroblasts after transduction with a lentiviral vector coding for human beclin-1. GAPDH was used as reference gene and presented levels were normalized for NT (non transduced) condition (Student t-test $n=4/n=4$ * $p=0.05$).

B-Full length western blot membranes relative to Fig 5A. Red boxes indicate the cropping lines used to generate the figures.