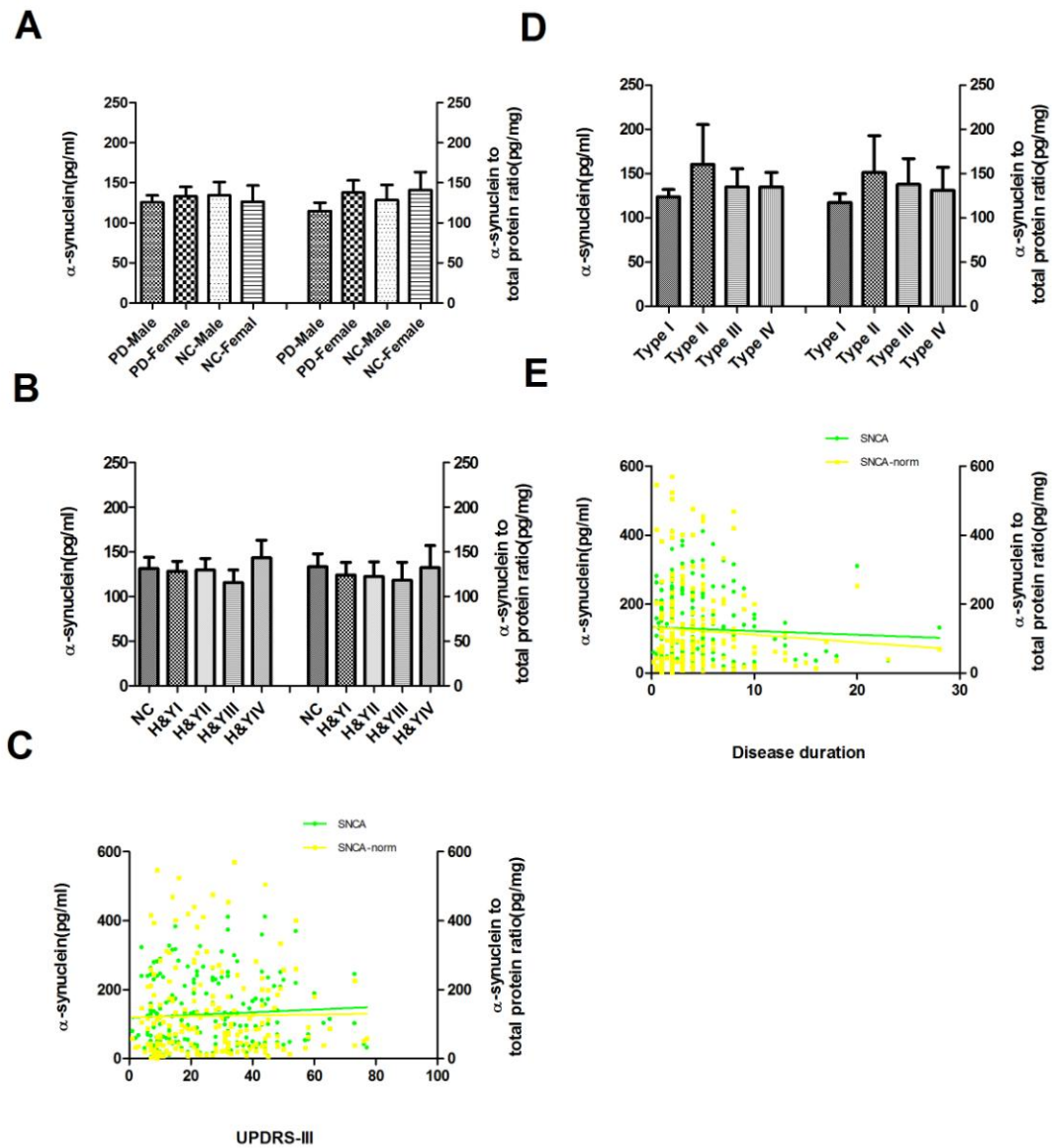


**Salivary total α -synuclein, oligomeric α -synuclein and SNCA variants in Parkinson's
disease patients**

Wenyan Kang^{1,2†}, Wei Chen^{1†}, Qiong Yang¹, Lina Zhang³, Linyuan Zhang¹, Xiaoying Wang¹,
Fangyi Dong¹, Yang Zhao¹, Shuai Chen¹, Thomas J. Quinn⁴, Jing Zhang⁵, Shengdi Chen^{1,§}, Jun
Liu^{1,§}

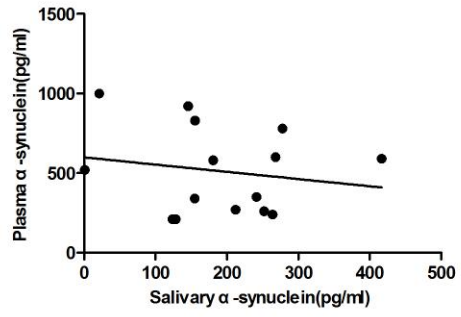
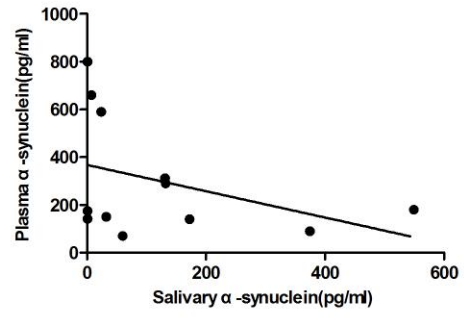
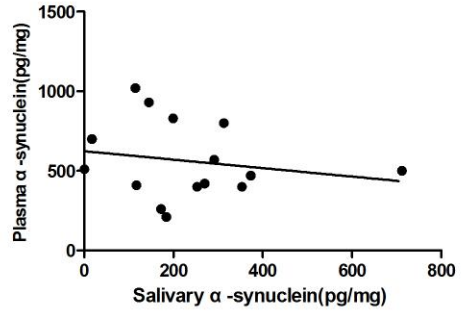
Suppl. Figure 1. Salivary total α -synuclein and PD

(A) Salivary α -synuclein levels were measured in normal controls (NC) and PD samples by Luminox. Salivary total α -synuclein levels did not correlate with gender both in individual PD and control groups ($p=0.71$, $p=0.32$ when normalized in PD group; $p=0.75$, $p=0.67$ when normalized in the NC group). (B) Statistical analysis of salivary total α -synuclein in Hoehn and Yahr's stages of PD, with no significant difference being achieved ($p>0.05$). (C) Salivary total α -synuclein didn't correlated with disease severity as measured by UPDRS motor scores ($r=0.11$, $p=0.14$; $r=0.087$, $p=0.22$ when normalized) using linear regression analysis with spearman's correlation, and also checked by partial correlation to controlling for possible confounding variables-age and gender. (D) There is no significant difference among the different drug treatment groups ($p=0.83$, $p=0.75$ when normalized). (E) Using linear regression analysis with spearman's correlation, levels of total α -synuclein in saliva didn't correlated with disease duration in PD group ($r=0.0011$ $p=0.99$, $r=-0.029$, $p=0.68$ when normalized), no in controls neither ($p>0.05$, $p>0.05$ when normalized). Error bars represent mean \pm SEM.



Suppl. Figure 2. Salivary α -synuclein and plasma α -synuclein

The levels of α -synuclein in salivary and plasma were measured in 15 normal controls (NC) and 12 PD samples by Luminex. Using linear regression analysis with spearman's correlation, levels of total α -synuclein in saliva didn't correlated with plasma α -synuclein in normal controls (A-B, $p > 0.05$), no neither in PD group (C-D, $p > 0.05$).

A**C****B****D**