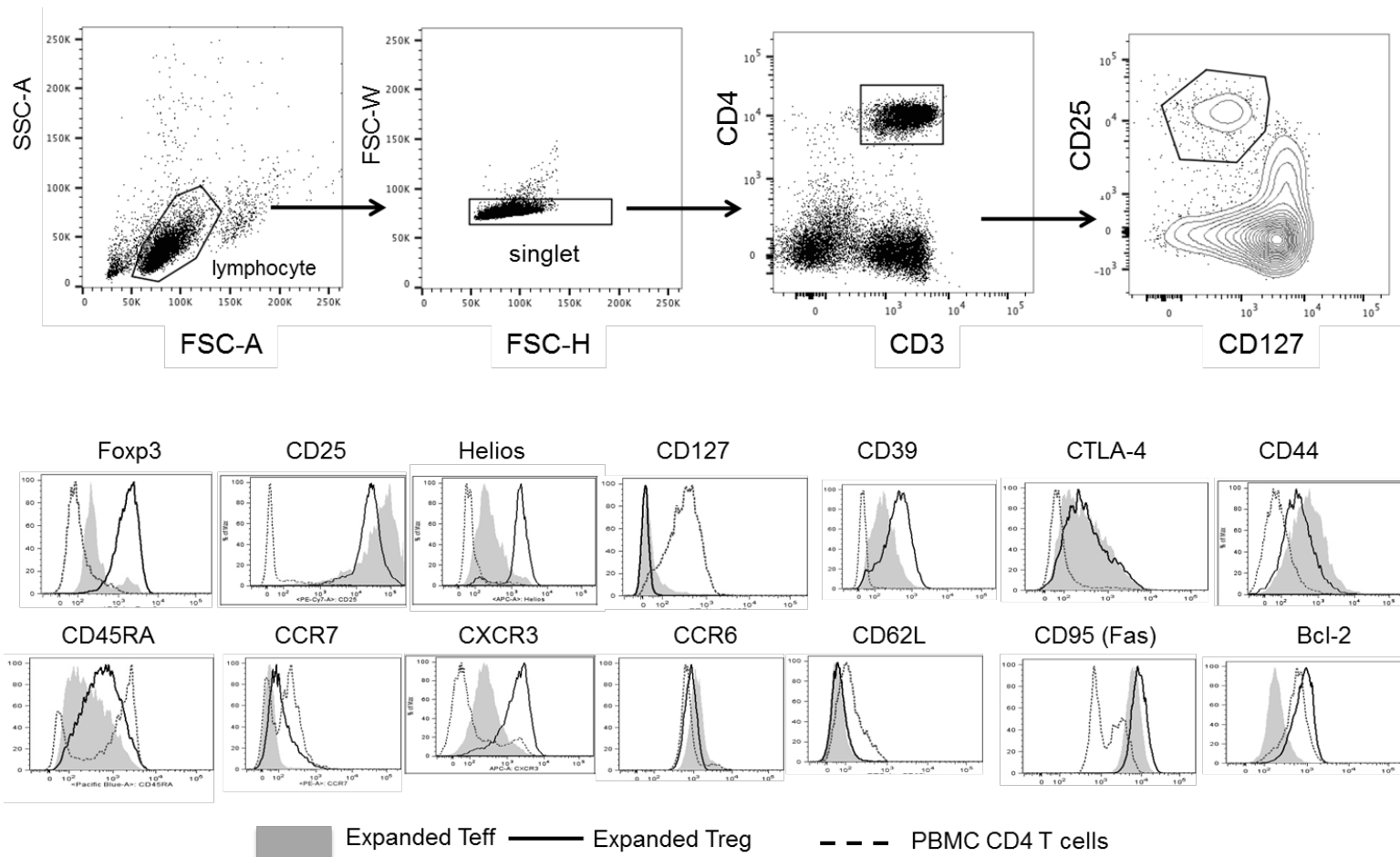


Supplementary Figure 1



Gating for flow sorting of Treg and phenotype of the ex-vivo expanded infused Treg. Lymphocytes were gated based on forward (FSC) and side-scattered light (SSC), followed by single cell and CD4⁺ T cell gating. Treg were gated on CD25⁺CD127^{lo} from CD4⁺ T lymphocytes (Top). Expanded Treg and Teff were stained for FcγR3, CD25, Helios, CD127, CD39, CTLA-4, CD44, CD45RA, CCR7, CXCR3, CCR6, CD62L, CD95 and Bcl-2. CD4⁺ PBMC T cells were used as controls. Data are representative of 4 experiments (bottom).