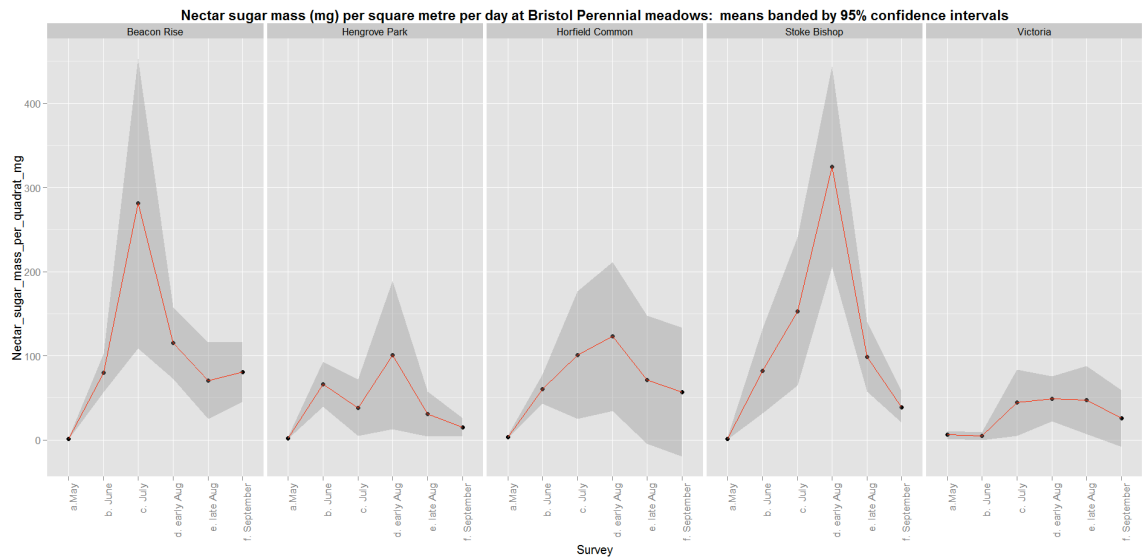
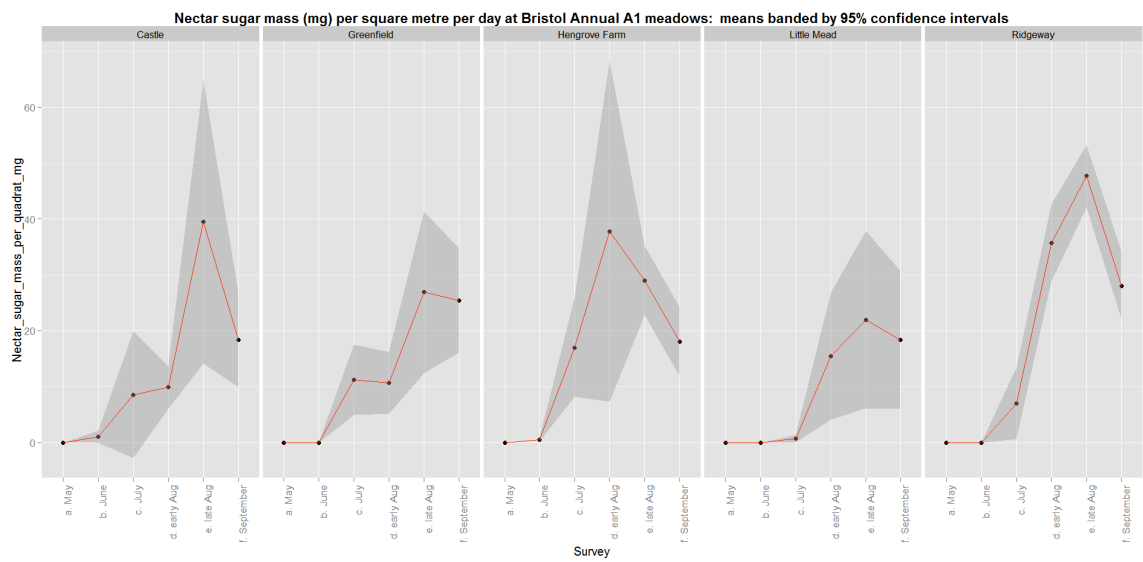


Figure S4. Seasonal patterns in nectar sugar nectar sugar mass/m²/day for each site in (a) Bristol, (b) Leeds, and (c) Reading. Point values shown are means over 7x 1m² quadrats, with 95% confidence intervals shaded.

(a) Bristol: Perennial



Annual A1



Annual A2

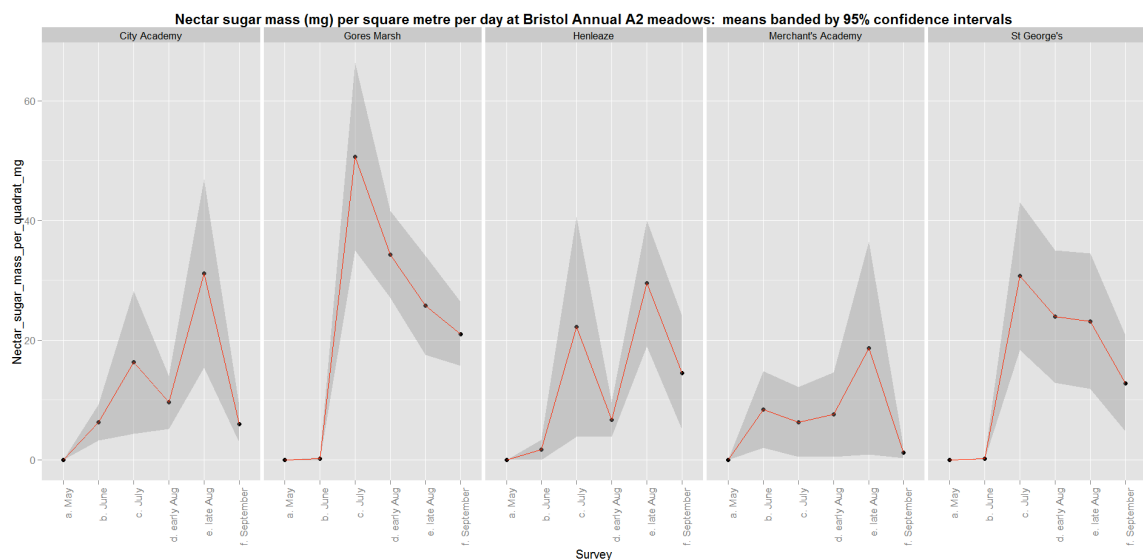
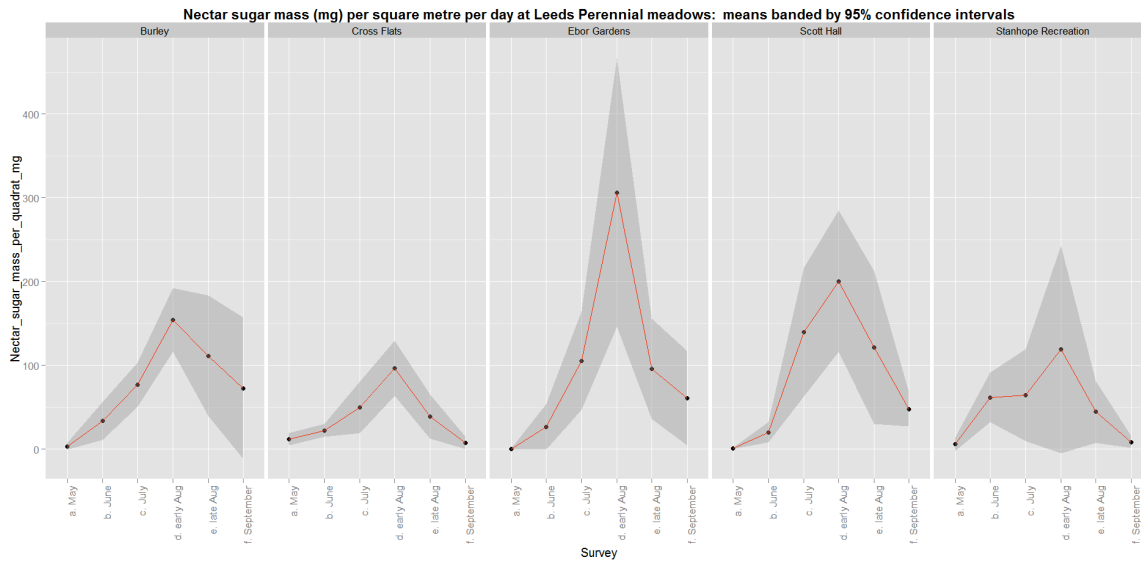
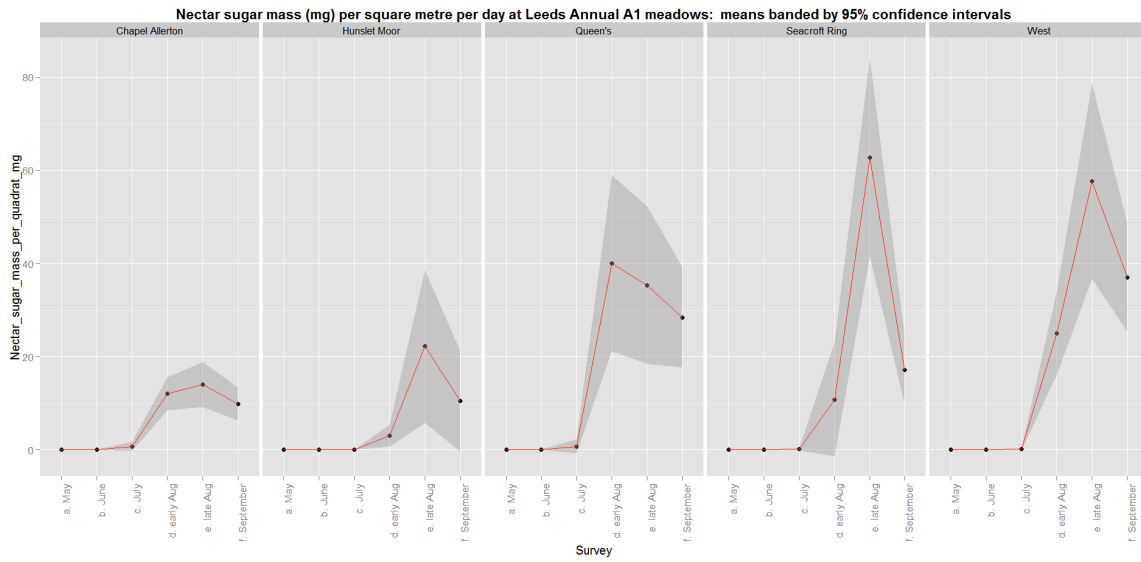


Figure S4 (continued). Seasonal patterns in nectar sugar mass/m²/day for each site
 (b) Leeds: Perennial



Annual A1



Annual A2

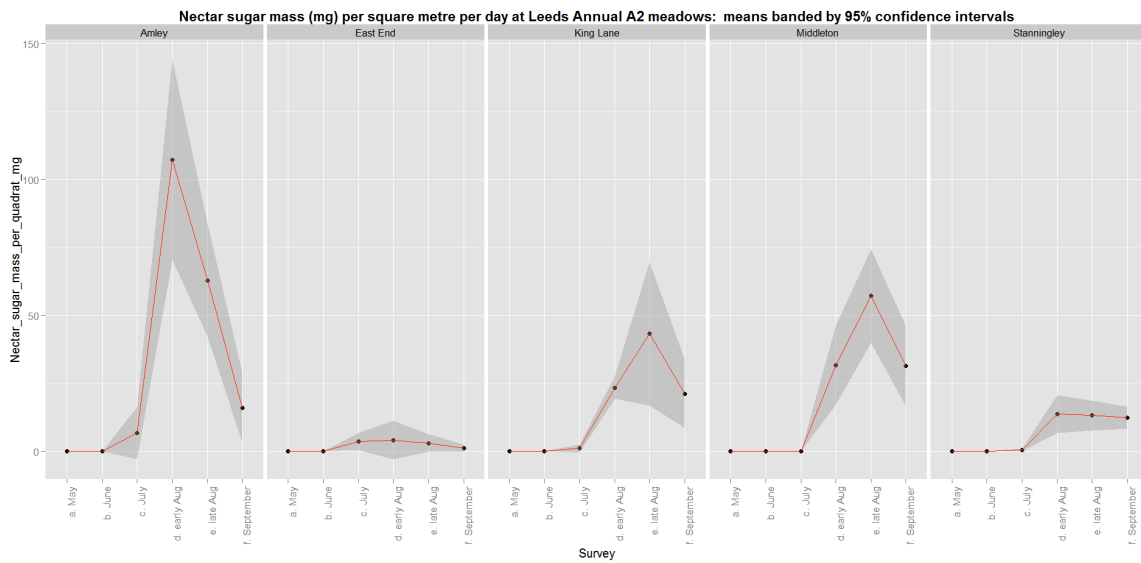
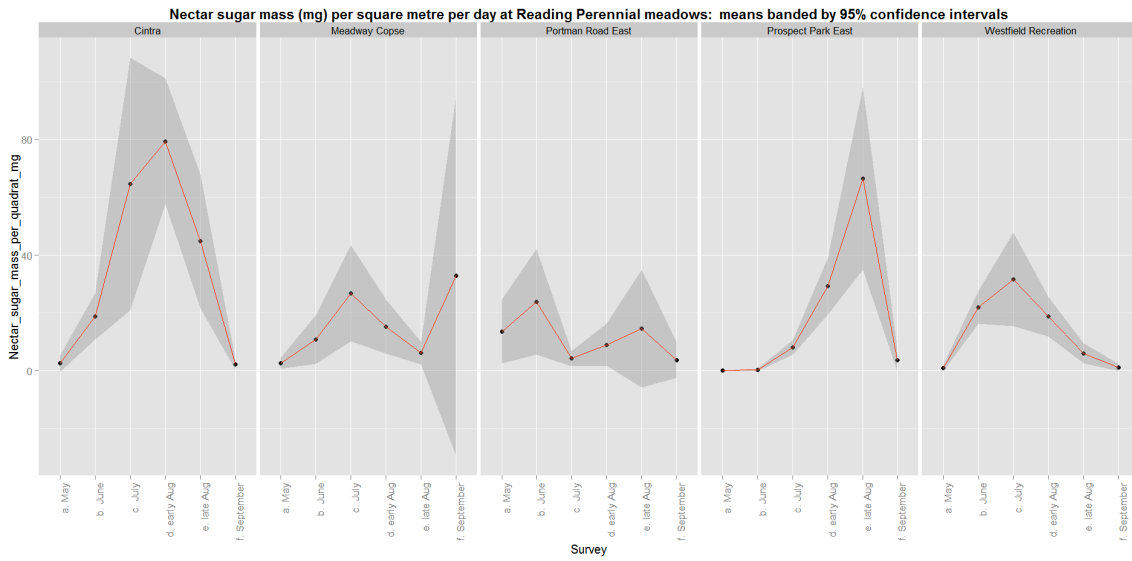
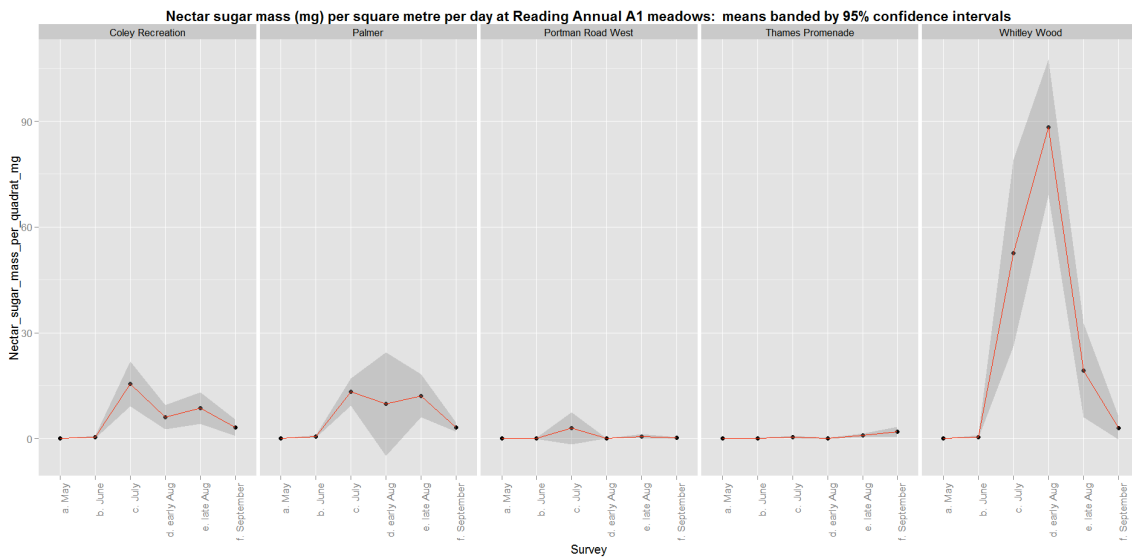


Figure S4 (continued). Seasonal patterns in nectar sugar mass/m²/day for each site
 (c) Reading: Perennial



Annual A1



Annual A2

