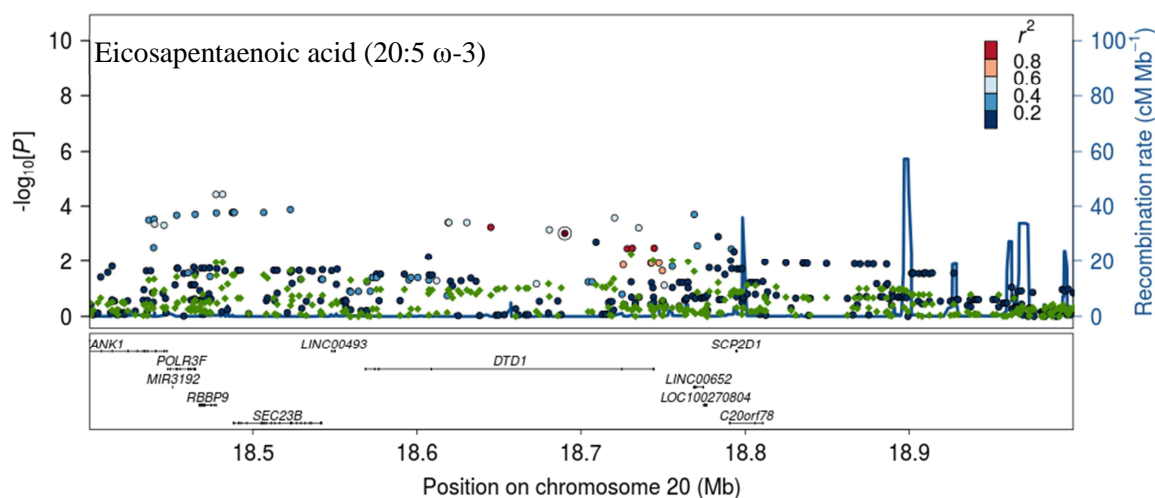
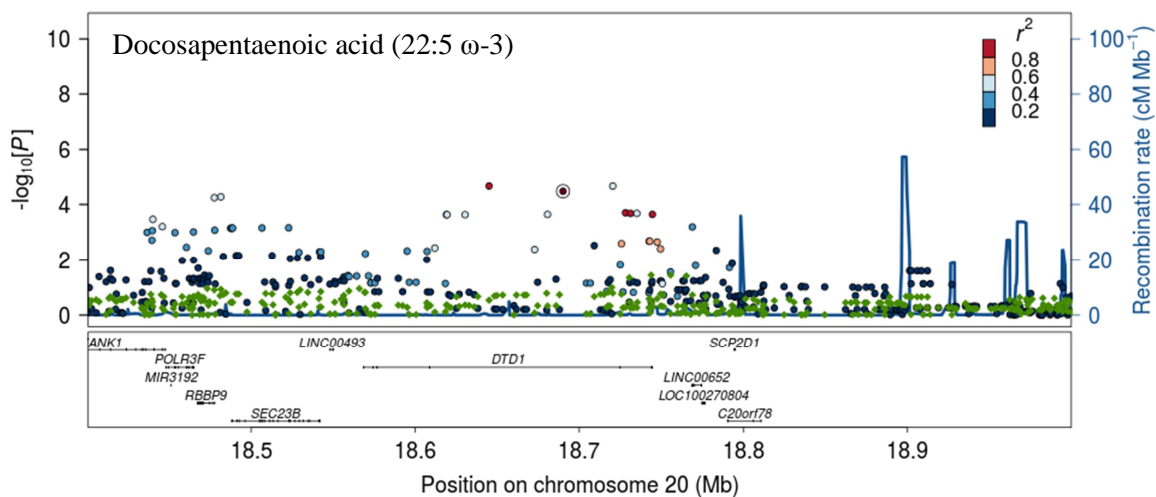


**S7 Fig. Association and conditional plots.** Unconditional and conditional association analyses for rs6035106 in the *DTD1* locus with A) eicosapentaenoic acid (20:5  $\omega$ -3), B) docosapentaenoic acid (22:5  $\omega$ -3), C) docosahexaenoic acid (22:6  $\omega$ -3), D) dihomo-gamma-linolenic acid (20:3  $\omega$ -6), E) arachidonic acid (20:4  $\omega$ -6), F) adrenic acid (22:4  $\omega$ -6), G) oleic acid (18:1  $\omega$ -9), H) palmitic acid (16:0), and I) behenic acid (22:0). The association results of the unconditional analysis are colored according to the LD, which is calculated for the candidate SNP in the region. Green dots represent the results of the conditional analysis, and the circles denote the SNPs conditioned on. The p-values are based on imputation data.

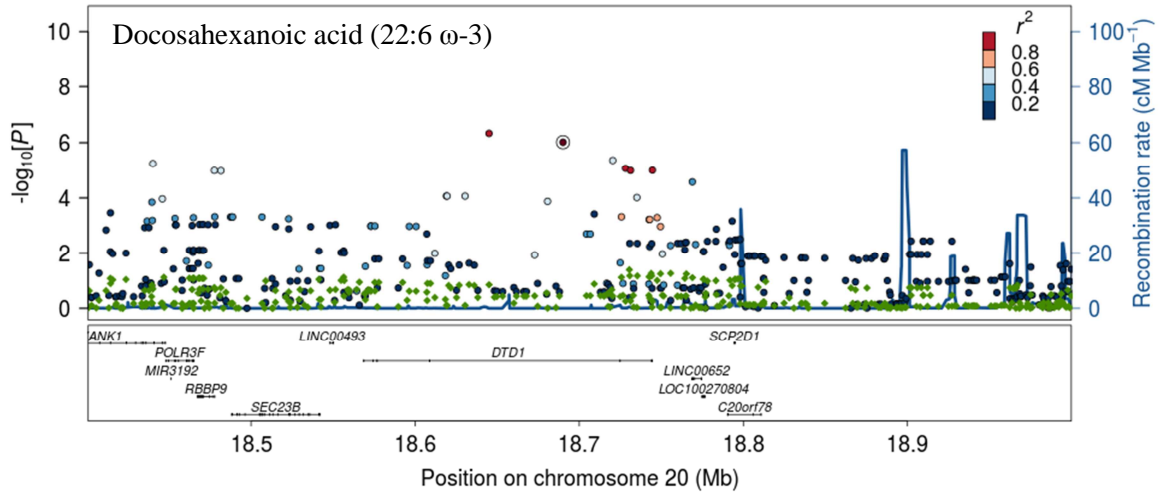
A



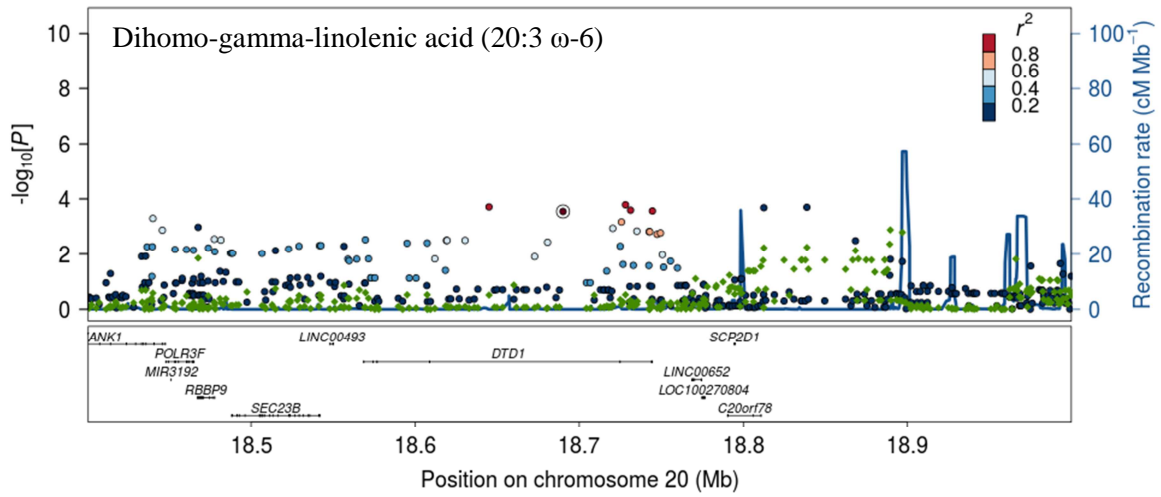
B



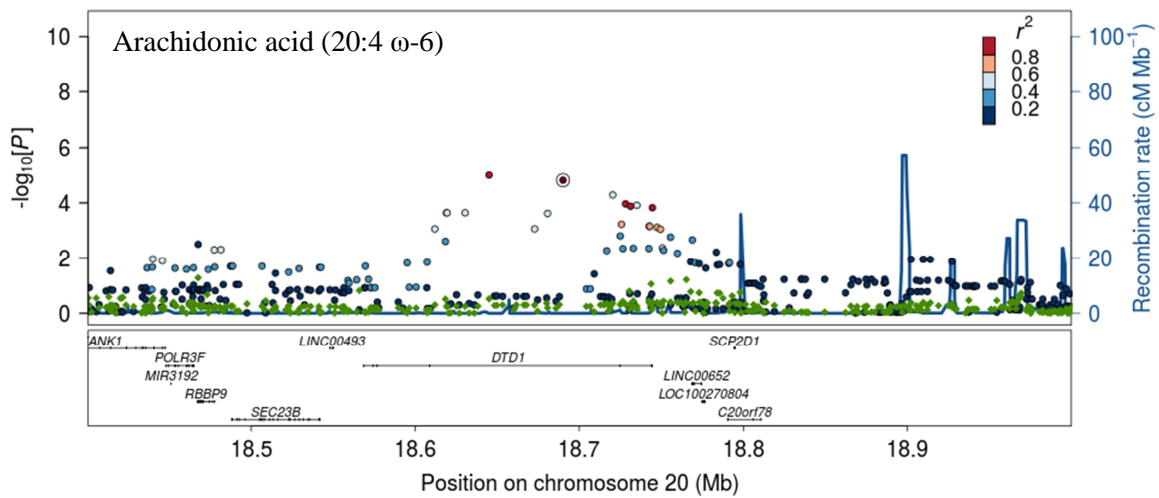
C



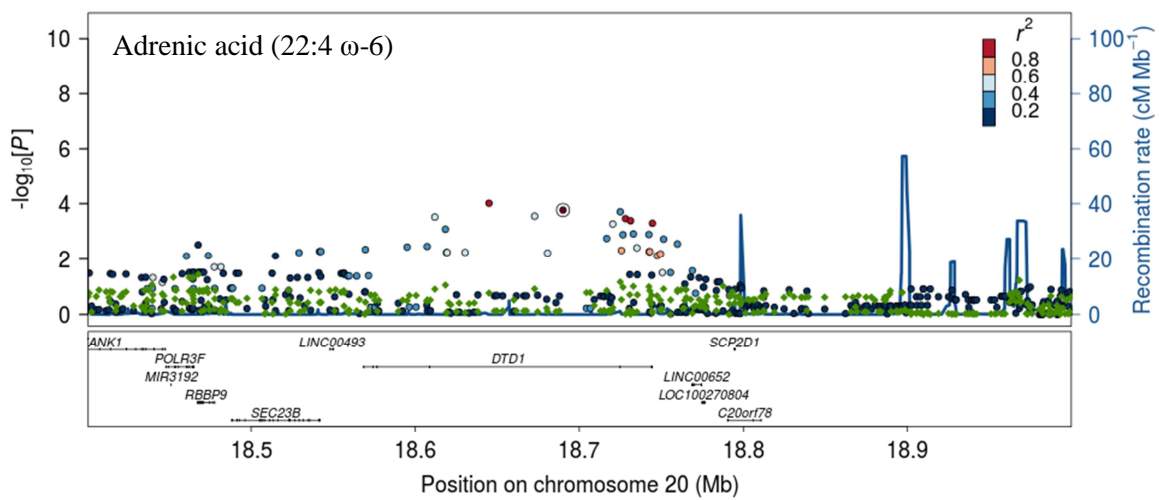
D



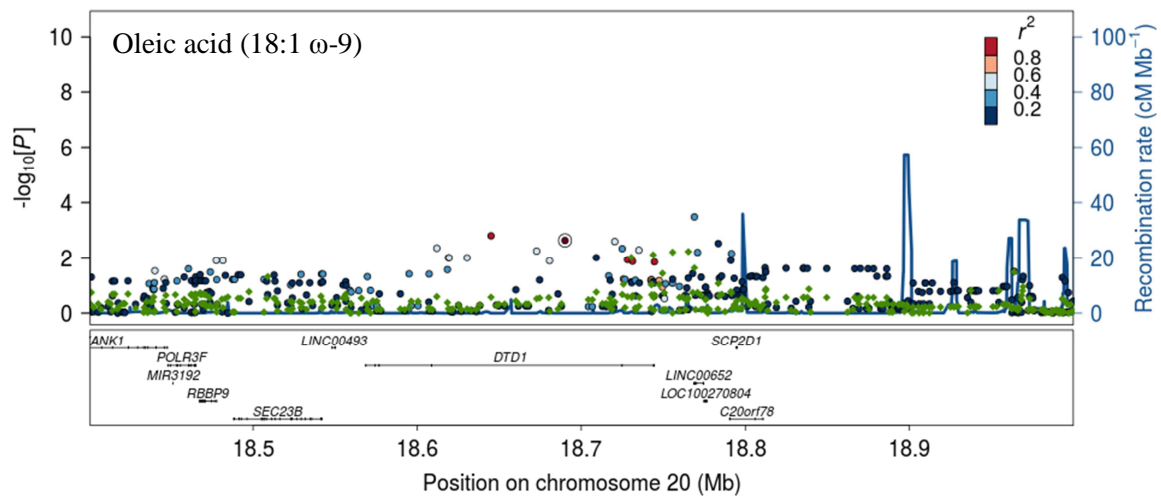
E



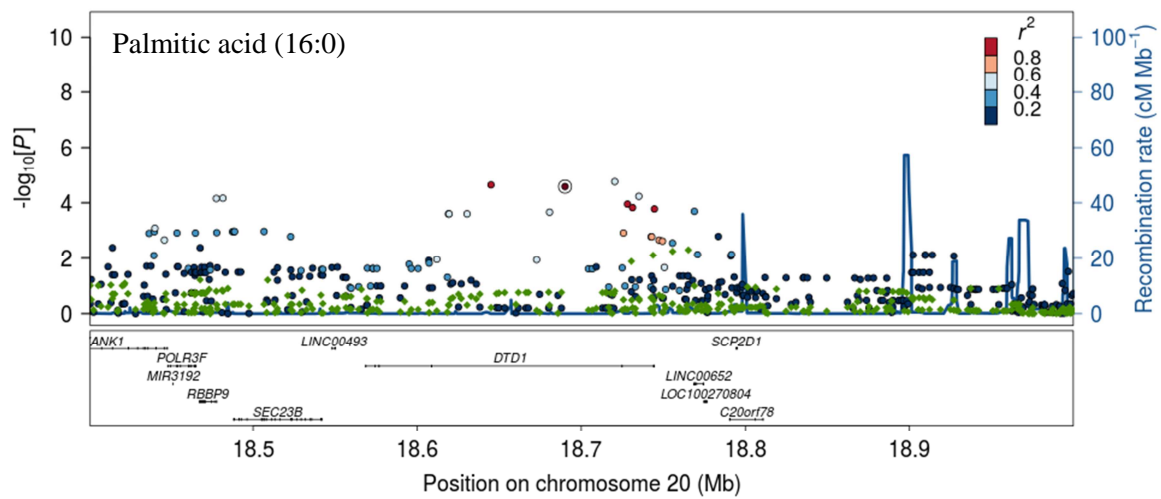
F



G



H



I

