

Supplementary materials

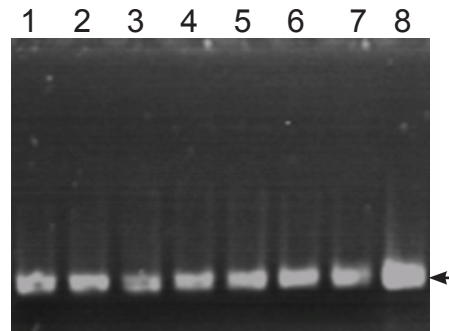


Fig. S1 Detection of bacteriocin genes in different bacterial strains isolated from goat cheese. Lane 1, *Lactobacillus rhamnosus* LC20; lane 2, *L. plantarum* LC22; lane 3, *L. pentosus* MN24; lane 4, *L. plantarum* MN26; lane 5, *Lactobacillus helveticus* MN27; lane 6, *Enterococcus faecium* MN28; lane 7, *L. plantarum* MN29; lane E, *E. faecium* UQ. A 1 kpb ladder (Invitrogen) was used to determine to estimate size of amplicons. Arrow indicates the position of enterocin A genes, at ~0.4 kbp.