

(-)-SCR1693 Protects against Memory Impairment and Hippocampal Damage in a Chronic Cerebral Hypoperfusion Rat Model

Xiaoyin Zhu^{a,1,2}, Jingwei Tian², Songmei Sun², Dong Qiuju², Zhang Fangxi², Xiumei Zhang^{b,1} *

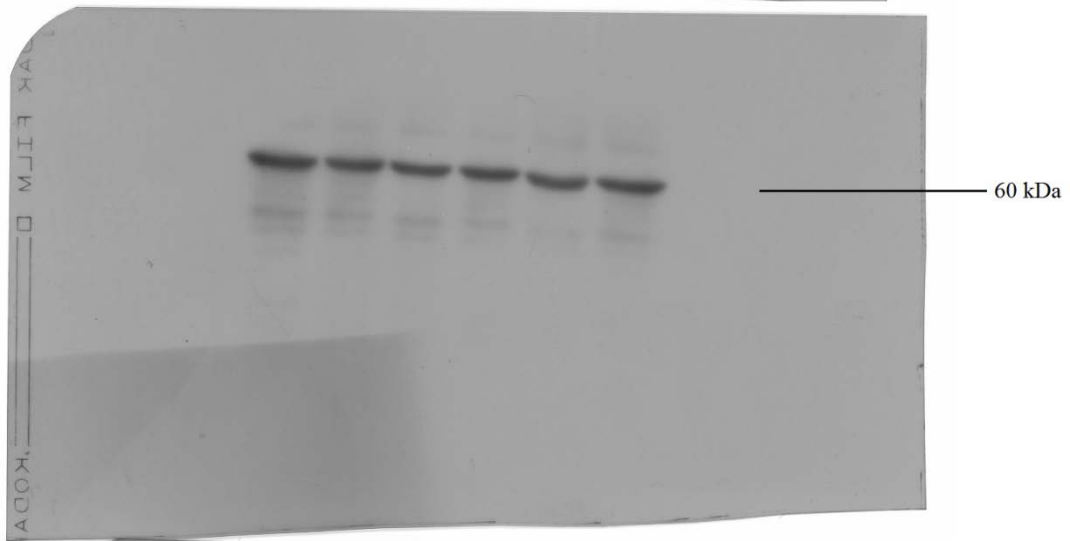
¹ Department of Pharmacology, Shandong Univeristy School of Medicine 44#,
Wenhua Xi Road, Jinan, Shandong, 250012 P.R. China

² Key Laboratory of Molecular Pharmacology and Drug Evaluation (Ministry of
Education of China), School of Pharmacy, Yantai University, Yantai, China.

^aE-mail: zhuxiaoyin@luye.cn

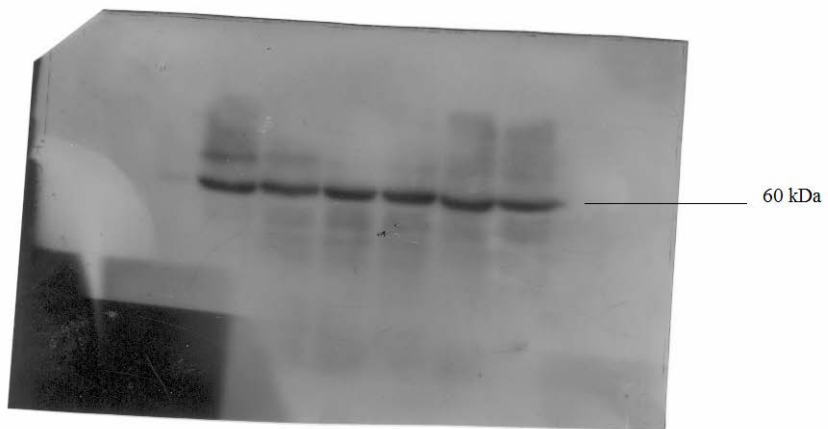
^bE-mail: zxy_sptenic@163.com

p-Akt



sham model donepezil 0.3 1 3
1 mg/kg (-)-SCR1693 (mg/kg)

Akt



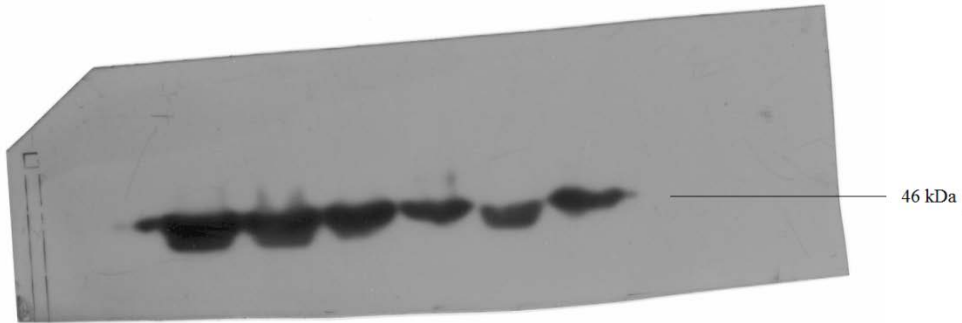
sham model donepezil 0.3 1 3
1 mg/kg (-)-SCR1693(mg/kg)

p-GSK-3 β



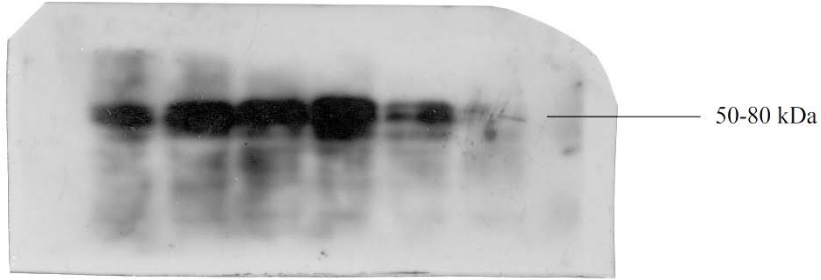
sham model donepezil 0.3 1 3
1mg/kg (-)-SCR1693(mg/kg)

GSK-3 β



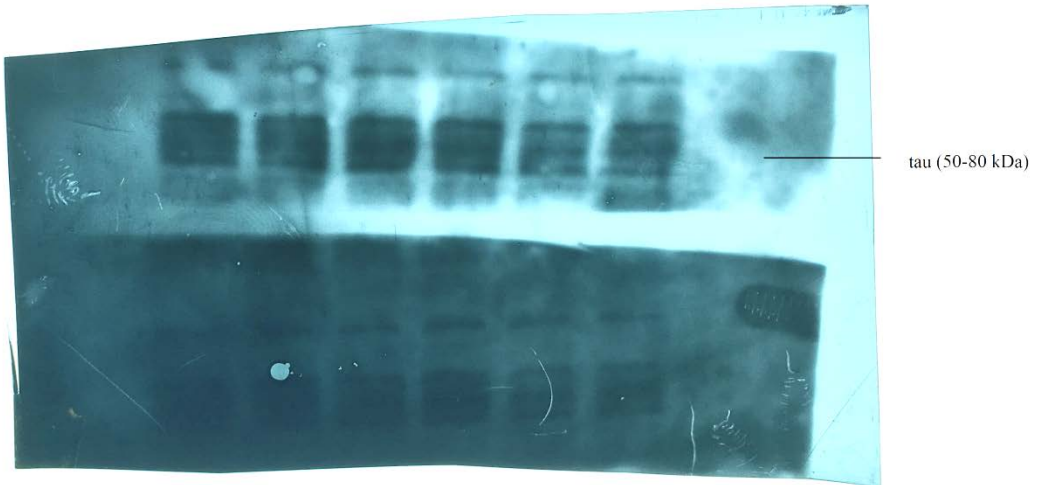
sham model donepezil 0.3 1 3
1 mg/kg (-)-SCR1693(mg/kg)

p-tau



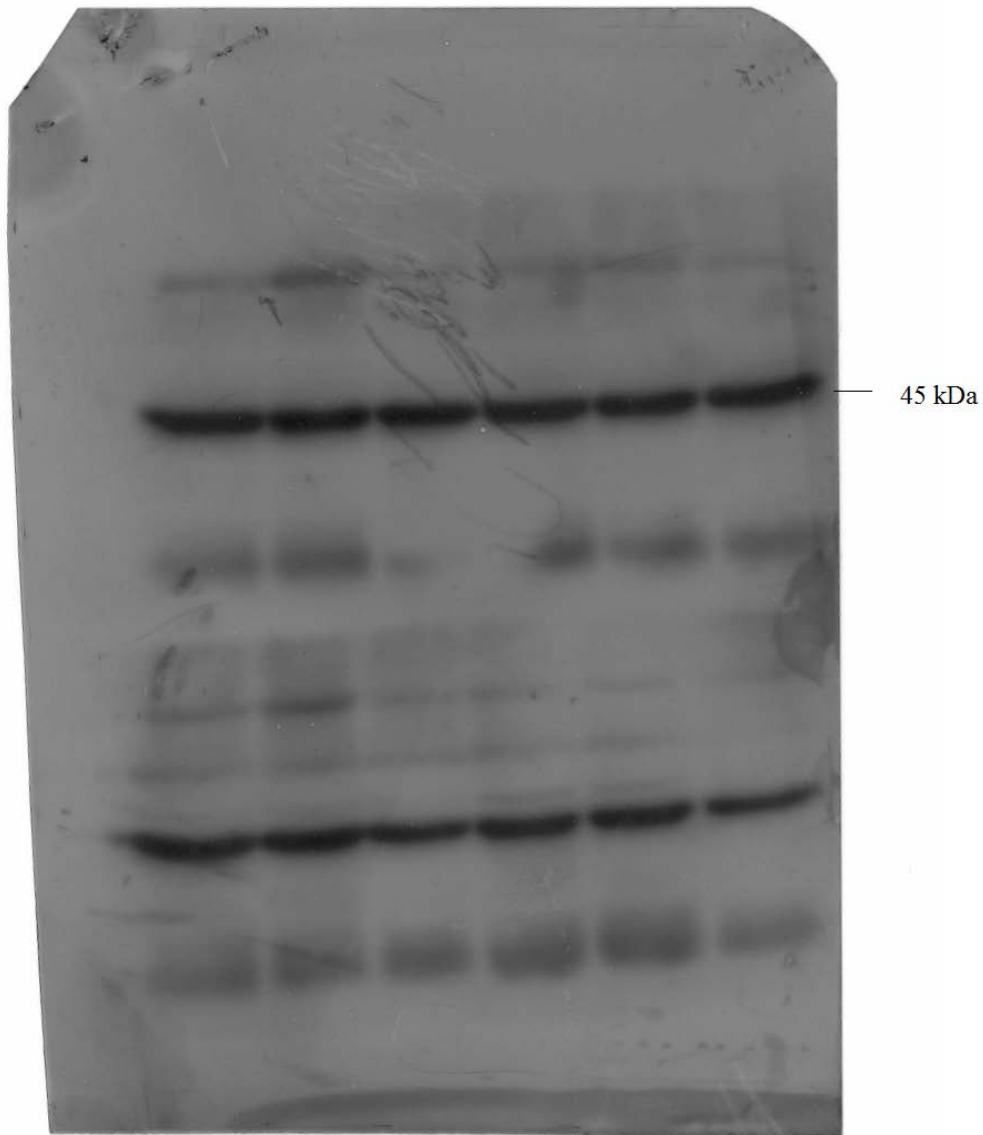
sham model donepezil 0.3 1 3
1 mg/kg (-)-SCR1693(mg/kg)

tau



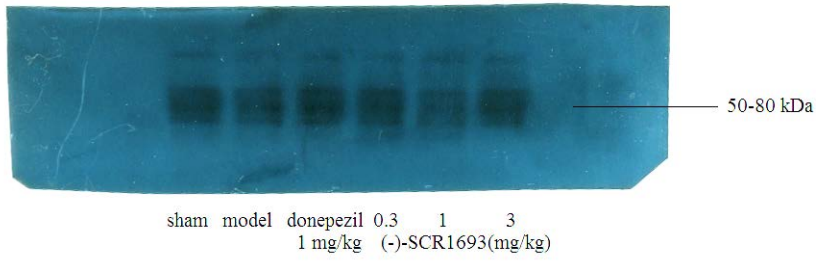
sham model donepezil 0.3 1 3
1 mg/kg (-)-SCR1693 (mg/kg)

β -actin



sham	model	donepezil 1 mg/kg	0.3 (-)-SCR1693 (mg/kg)	1 (-)-SCR1693 (mg/kg)	3 (-)-SCR1693 (mg/kg)
------	-------	----------------------	----------------------------	--------------------------	--------------------------

Tau



Presenilin 1

