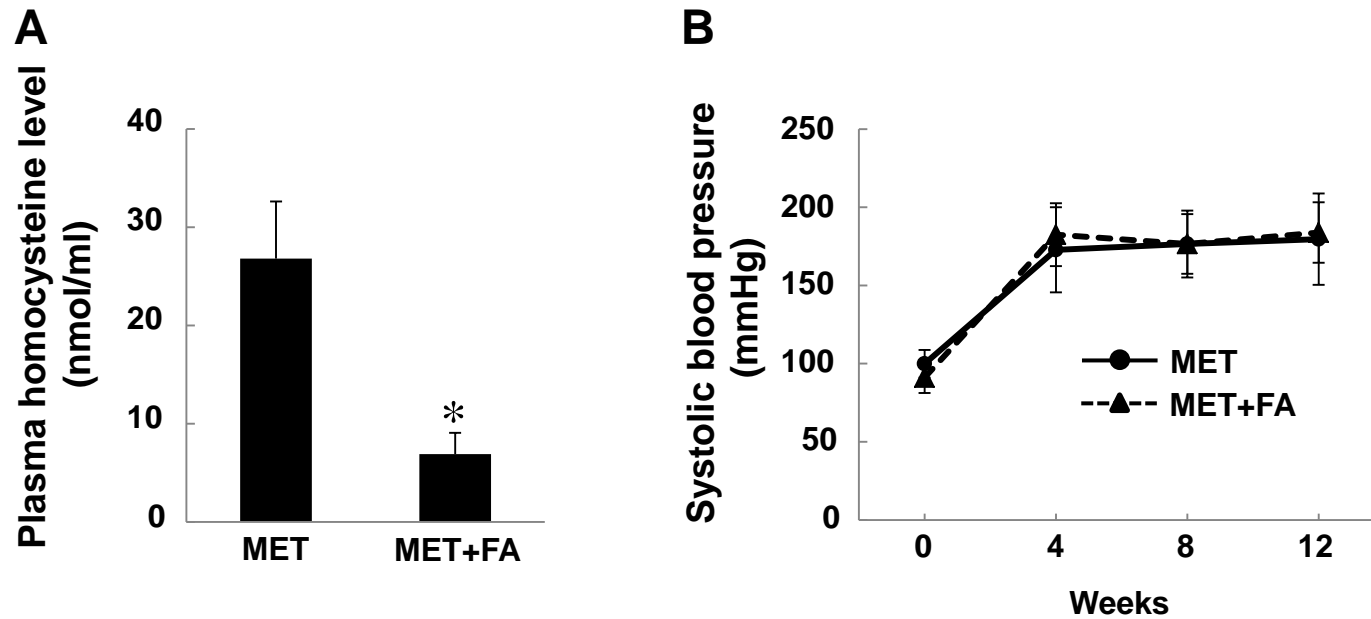


**Figure S3**



**A.** Plasma homocysteine level measured by radioimmunoassay.

\* $p < 0.05$  vs methionine (MET)-treated rats. Student's *t* test (each group,  $n = 5$ , mean  $\pm$  SD).

**B.** The systolic blood pressure was measured every 4 weeks using the tail-cuff method. Folic acid did not affect the systolic blood pressure. Data are the mean  $\pm$  SD in both groups.

MET+FA: Rats treated with MET plus folic acid.